

House Three-bedroom (4+kk)

Sold

136 m², Prague 9, Čakovice, Tupolevova



House Three-bedroom (4+kk)

Sold

136 m², Prague 9, Čakovice, Tupolevova

Plot	243 m ²
Foot print	100 m ²
Garden	98 m ²
Parking	Garage parking space and place on the plot.
Garage	Yes
Cellar	-
PENB	B
Reference number	36574

This elegantly designed family house with a garage is part of the new Na Pramenech terraced development emerging on the border of Čakovice, Letňany, and Ďáblice. The residential project, designed by architects Petr Kolář and Aleš Lapka from the ADR studio, combines proportionality, esthetics, and functionality, offering future residents maximum privacy, comfort, and the efficient use of space. The house in the 2nd phase will be completed in summer 2021.

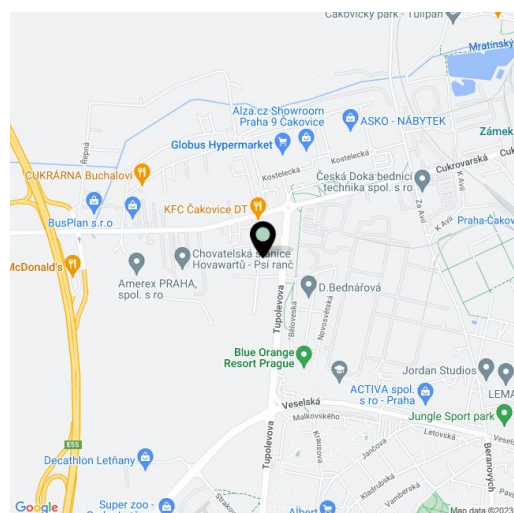
On the ground floor, there will be a living room with an open plan kitchen, a dining room, and access to a terrace **connected to the garden**, a closet, and a hallway with a toilet and access to the **garage**. Upstairs, accessible from the staircase from the living room there will be a master bedroom with a dressing room (or possible en-suite bathroom) and access to the **terrace**, a 2nd bedroom with French windows towards the terrace, a 3rd bedroom, a bathroom, and a hallway.

The house will be handed over with fully finished final surfaces (does not include the kitchen). The standard includes BARLINEK **wooden three-layer floors** (choice of 2 decors), RAKO EXTRA ceramic large-format tiles, plastic windows with micro ventilation, **insulated triple-glazed** panes, and a preparation for window blinds, Laufen, Hansgrohe, Roltechnik, and Tece sanitary ware, and a preparation for an electrical security alarm. Heating and hot water will be provided by a gas condensing boiler with a retention tank. Parking is **in the garage and on an outside parking space** on the property.

The Na Pramenech project provides excellent civic amenities consisting of 2 shopping centers and small shops, endless opportunities for sports, good connections with the city center, and plenty of spaces for leisure and relaxation. Within easy reach are kindergartens and elementary schools, a high school, an indoor and outdoor swimming pool, a bike path, skate park, or multifunctional sports center. The location is made more pleasant by the nearby green spaces of the **Ďáblice Grove** and **Letňany forest park**. A metro station is a 5-minute bus ride away, and stops are in the immediate vicinity of the project. In one of the next phases of construction, a kindergarten and a playground will be built directly in the complex.

Total floor area 142.2 m², usable area 136.3 m², built-up area 100.1 m², garden terrace 15 m², terrace 17.2 m², garden 97.8 m², plot 243 m²

For more information about the project visit the website www.domynapramenech.cz.



House Three-bedroom (4+kk)

Sold

136 m², Prague 9, Čakovice, Tupolevova

NA PRAMENECH



Bohatero přidání jezu domu, představitelje dispozicí reálné domu, kuchyňská linka a nábytek nejsou součástí smlouvání domu, zajištění je zajištěno pouze pro nájemnost. Specifikace pro kmenůvek, povrchové úpravy a rozložení je představeno přílohou "Standard memořování". Developer si vyhrazuje právo na změny a upřesnění bez předchozího upozornění.



C109 | 4+kk | 142,23 m²

Etapa II.

č.	místnost	m ²
1	zábveř	9,84
2	wc	2,32
3	obývací pokoj s kuchyní	45,61
4	garáž	19,60
5	komora	1,66
užitná plocha 1. NP		79,03
terasa		14,98
užitná plocha domu celkem		136,29
podlahová plocha domu celkem		142,23

www.domynapramenech.cz

Developer
bpd development

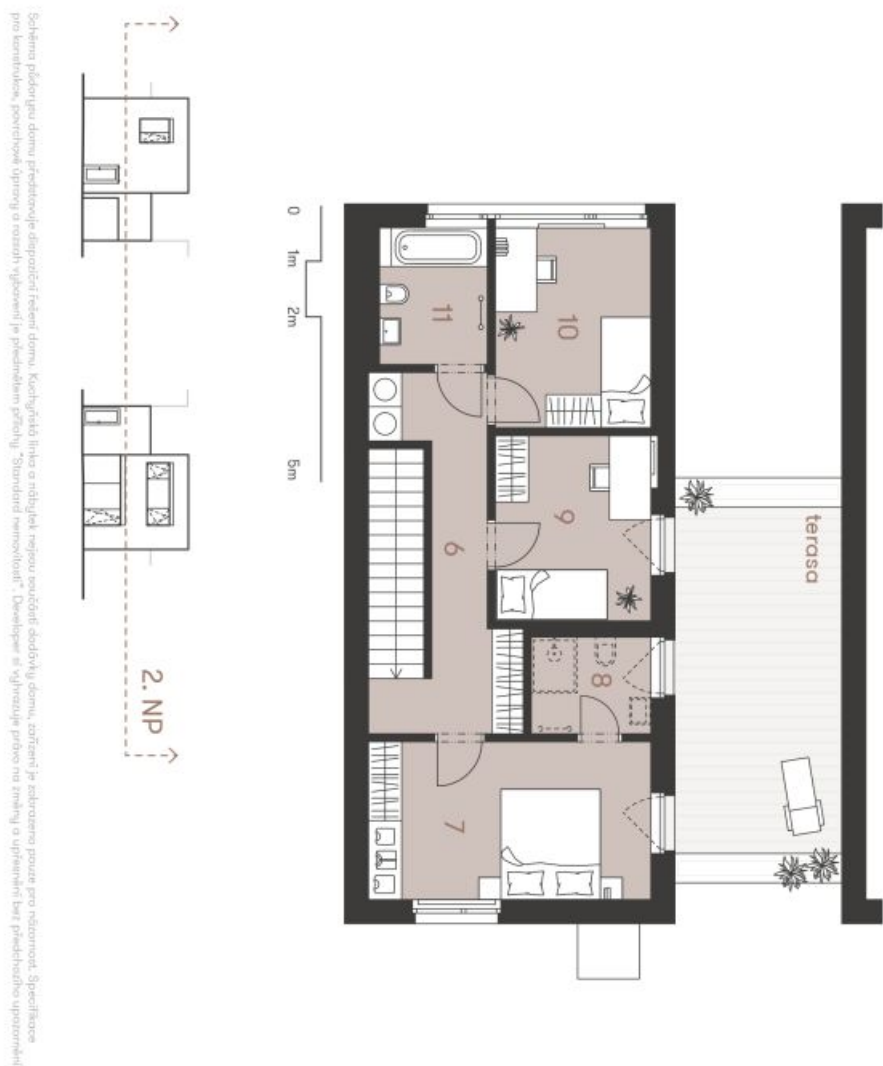
svoboda&williams | CHRISTIE'S
INTERNATIONAL REAL ESTATE
Ekluzivní prodávce
Na Perštýne 2, 110 00 Praha 1
+420 257 328 281, +420 257 322 032
info@svoboda-williams.com

House Three-bedroom (4+kk)

Sold

136 m², Prague 9, Čakovice, Tupolevova

NA PRAMENECH



Bohatero pldelri jtu domu, pnedstovuje dlegrdovci reent domu. Kuchynskio llnka a rtdlyjek najoou souvdit doudvly domu, zozreni je zdobzeno pozde pro nctoznost. Speciflce pro kermnkou, povrchovi krmny a rozstih vlybeneni je pndnktem pndij. "Standard nemovltost". Developer si vzhovuje prvo na znanu a upraveni bez pndkchdo upozneni.



C109 | 4+kk | 142,23 m²

Etapa II.

č.	místnost	m²
6	chodba a schodiště	14,41
7	pokoj	14,61
8	šatna (možnost koupelny)	3,78
9	pokoj	9,44
10	pokoj	10,19
11	koupelna	4,83
užitná plocha 2. NP		57,26
terasa		17,20
užitná plocha domu celkem		136,29
podlahová plocha domu celkem		142,23

www.domynapramenech.cz

Developer
bpd development

svoboda&williams | CHRISTIE'S
INTERNATIONAL REAL ESTATE
Ekluzivní prodejce
Na Perštýně 2, 110 00 Praha 1
+420 257 328 281, +420 257 322 032
info@svoboda-williams.com

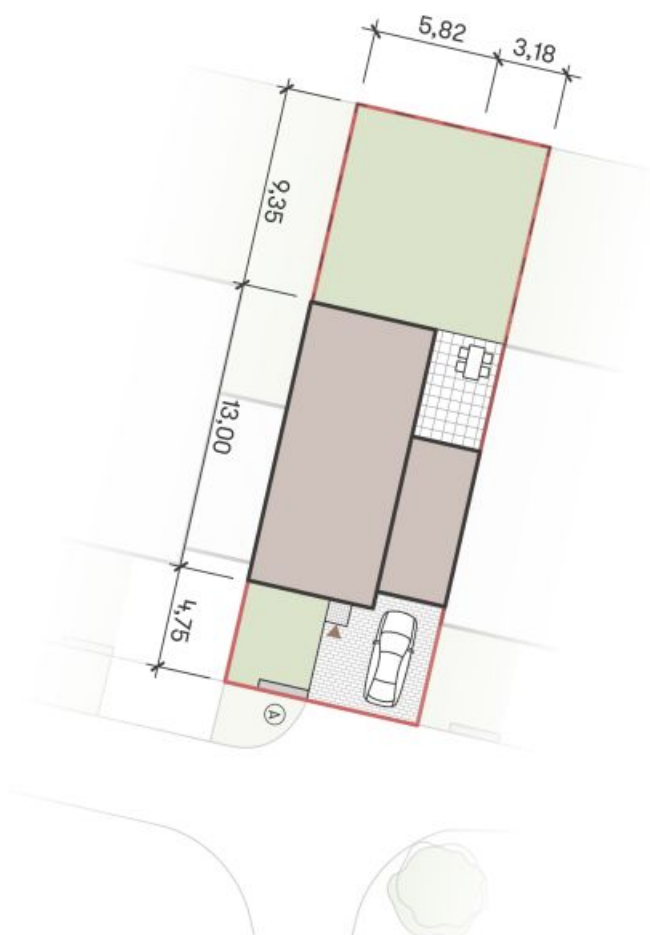
House Three-bedroom (4+kk)

136 m², Prague 9, Čakovice, Tupolevova

Sold

Situace

NA PRAMENECH



C109 | 4+kk | 142,23 m²

Etapa II.

plocha	m ²
zastavěná plocha domu	100,15
zahradra	97,85
ostatní plocha	45,00
celková plocha pozemku	243,00

- (A) sdrúženú pilíř pro elektroněř a plýnoměř
- hranice pozemku
- - - - - oplacení

www.domynapramenech.cz

Developer
bpd development

svoboda&williams | CHRISTIE'S
INTERNATIONAL REAL ESTATE
Ekluzivní proděice
Na Perštěgne 2, 110 00 Praha 1
+420 257 328 281, +420 257 322 032
info@svoboda-williams.com

House Three-bedroom (4+kk)

136 m², Prague 9, Čakovice, Tupolevova

Sold

NA PRAMENECH

Celková situace



C109 | 4+kk | 142,23 m²

Etapa II.



www.domynapramenech.cz

Developer
bpd development

svoboda&williams | CHRISTIE'S INTERNATIONAL REAL ESTATE
 Exkluzivní prodejce
 Na Perštýně 2, 110 00 Praha 1
 +420 257 328 281, +420 257 322 032
 info@svoboda-williams.com