

Apartment Four-bedroom (5+kk)

Ask for price

203 m², Prague 5, Malá Strana, Zborovská



Apartment Four-bedroom (5+kk)

Ask for price

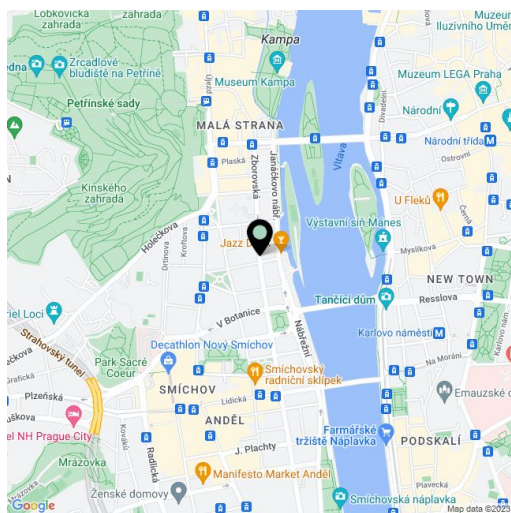
203 m², Prague 5, Malá Strana, Zborovská

Total area	203 m ²
Parking	On-site garage parking.
Garage	Yes
Cellar	Yes
PENB	A
Reference number	36516
Available from	Immediately

High-standard apartment with parking. This completely newly refurbished **4-bedroom 3-bathroom** apartment is situated on the fourth floor of a late **19th century** apartment building that has been meticulously renovated, benefiting from a **24/7 reception, security, a camera system, a swimming pool, a sauna, a gym, underground parking, an elevator, and a landscaped courtyard garden.** Centrally located just steps from the **Vltava riverbank, within walking distance of Kampa Island, Petřín Hill Park, Malá Strana (Lesser Town), and Old Town.** The neighborhood has easy access to the **Prague Castle, the Anděl commercial center and metro station, and the French School.**

The interior features a large living room with a dining area and a fully fitted open plan kitchen, 4 bedrooms, 3 bathrooms, a utility room, an additional separate toilet, and a spacious entrance hall.

Smart home control and security system, quality equipment and finishes, **heat recovery ventilation, oak floors,** large-format tiling, security entry door, built-in wardrobes, triple-glazed windows, automatic roller blinds, gas boiler, washer, dryer, **SieMatic** kitchen with **Miele** appliances, induction cooktop, dishwasher, microwave oven, video entry phone, WiFi, **cellar,** chip entry, charging station for electric cars. A **garage parking** space is available at CZK 10,000/month + VAT. Deposit for service charges and water: CZK 70/sq. m./month. Gas and electricity are billed separately.

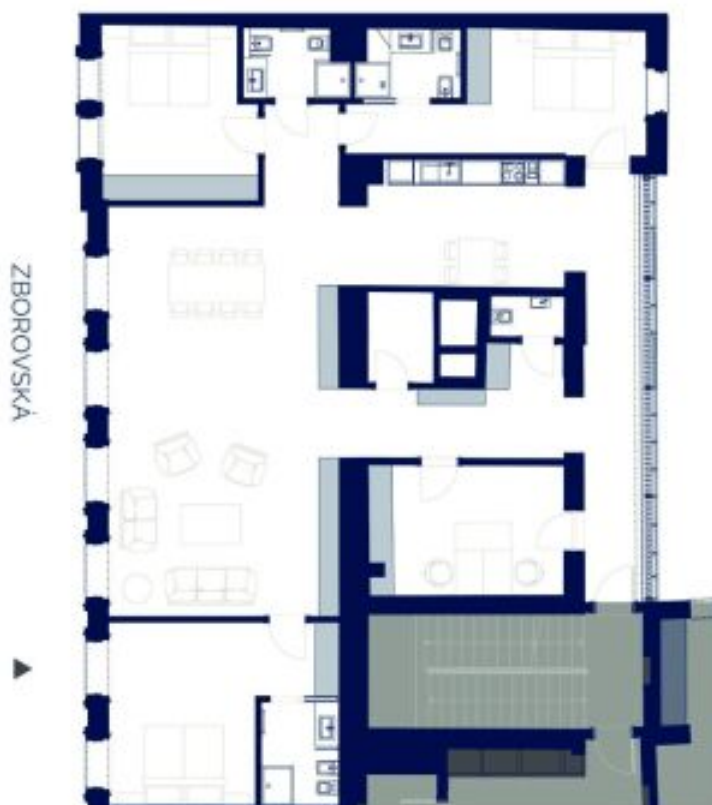


* Area of the unit according to the Civil Code. The area consists of the sum total area of the entire unit bounded by perimeter walls.

Apartment Four-bedroom (5+kk)

Ask for price

203 m², Prague 5, Malá Strana, Zborovská



Celková výměra bytu	203 m ²
Vstupní chodba	16 m ²
Chodba	13 m ²
WC	2 m ²
Technická místnost	4 m ²
Pracovna	16 m ²
Obývací pokoj	60 m ²
Ložnice	21 m ²
Koupelna + WC	5 m ²
Ložnice	16 m ²
Koupelna + WC	4 m ²
Koupelna + WC	4 m ²
Ložnice	18 m ²
Kuchyň	18 m ²
Chodba	5 m ²