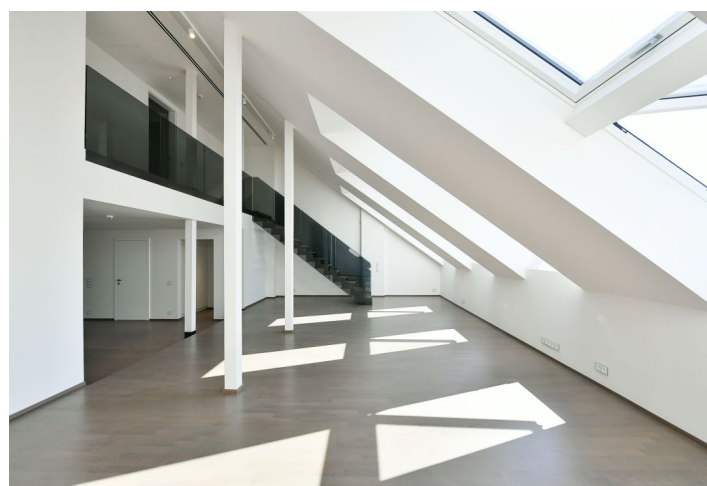
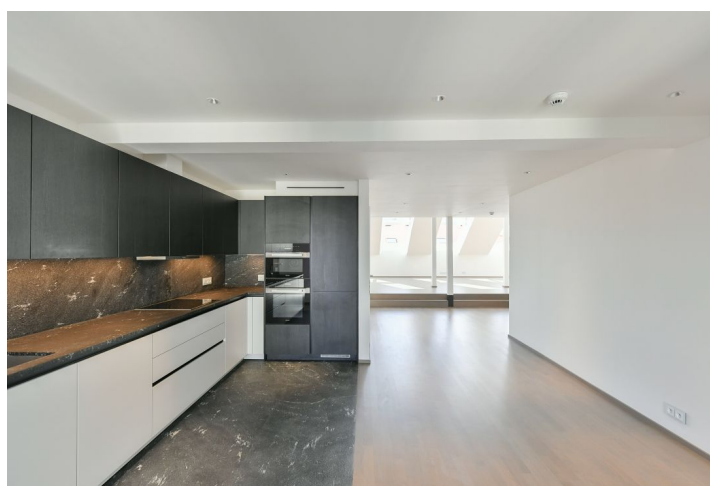
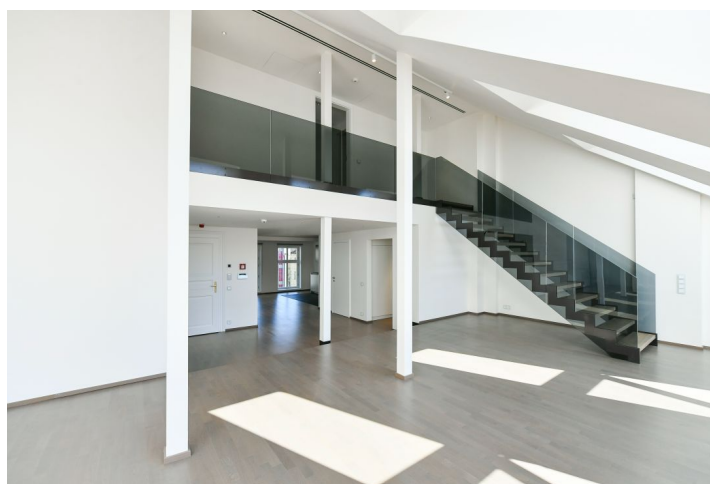
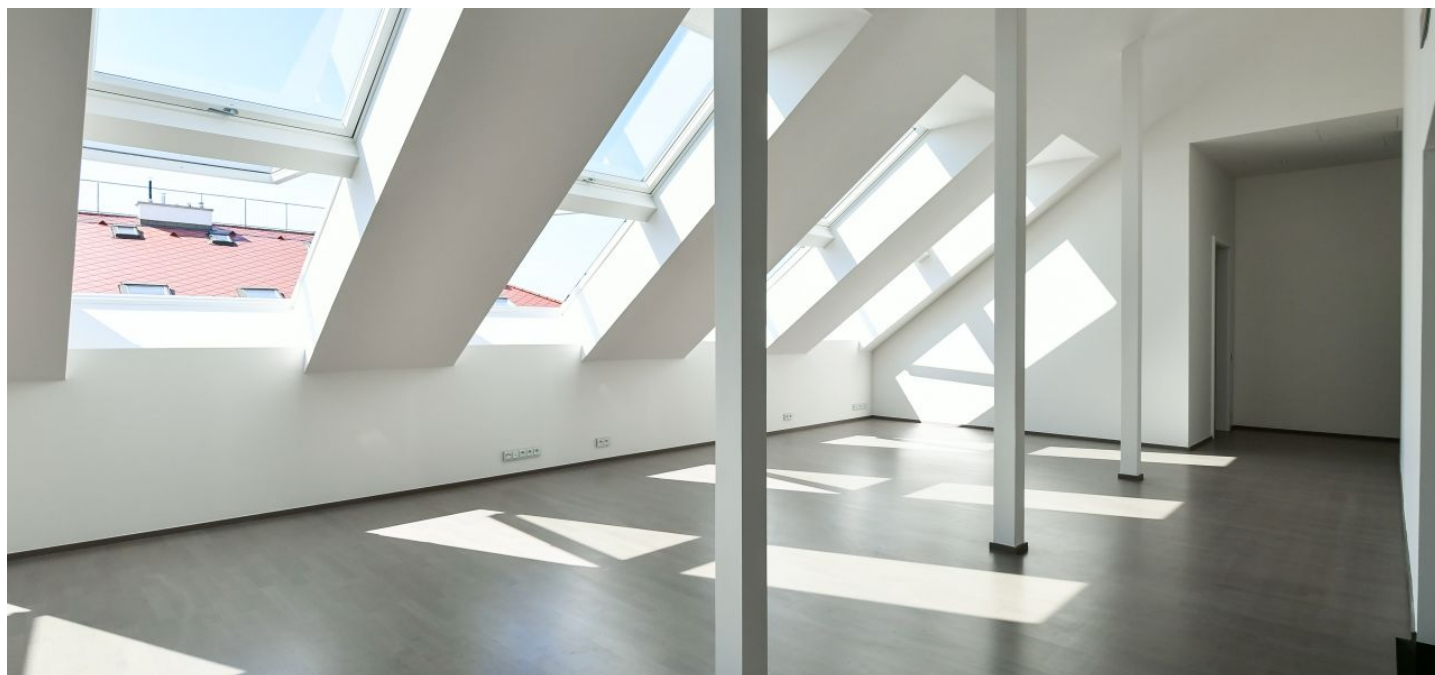


Apartment Three-bedroom (4+kk)

€ 5 398 | CZK 135 000

235 m², Prague 5, Malá Strana, Zborovská



Apartment Three-bedroom (4+kk)

€ 5 398 | CZK 135 000

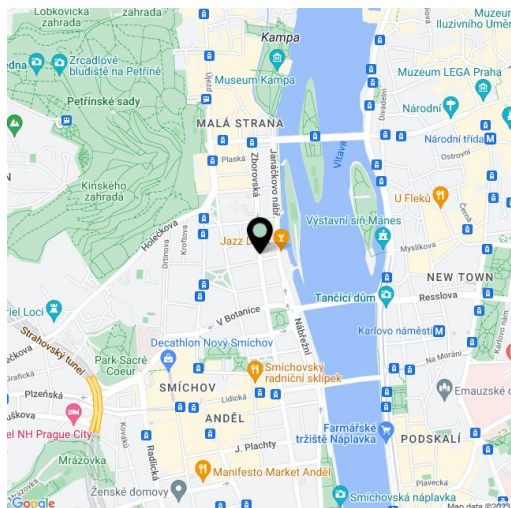
235 m², Prague 5, Malá Strana, Zborovská

Total area	235 m²
Parking	On-site garage parking.
Garage	Yes
Cellar	Yes
Service price	Deposit for services and water CZK 130/m2/month. Gas and electricity - transferred to the tenant.
PENB	A
Reference number	36514
Available from	Immediately

High-standard attic apartment with parking. This split-level apartment with 2 bathrooms is on the 5th floor of a late 19th century apartment building that has been meticulously renovated, offering a 24/7 reception, security, camera system, swimming pool, sauna, gym, underground parking, an elevator, and a landscaped courtyard garden. Centrally located just steps from the Vltava riverbank, within walking distance of Kampa Island, Petřín Hill Park, Malá Strana (Lesser Town), and Old Town. The neighborhood has easy access to the Prague Castle, the Anděl commercial zone and metro station, and French School.

The lower level features a living room, a fully fitted open plan kitchen with a dining area, two bedrooms, a bathroom, a utility room, an additional separate toilet, a **walk-in closet**, and an entrance hall. The upper floor includes a bedroom with a **walk-in closet** and an en-suite bathroom.

Smart home control and security system, quality equipment and finishes, **air-conditioning**, **oak floors**, large-format tiles, security entry door, built-in wardrobes, triple-glazed windows, remote-control operated atelier windows, blackout blinds, gas boiler, washer, dryer, **SieMatic** kitchen with **Miele** appliances, induction cooktop, dishwasher, microwave oven, video entry phone, Wi-Fi, **cellar**, chip entry, charging station for electric cars. A **garage parking** space is available at CZK 10,000/month + VAT.



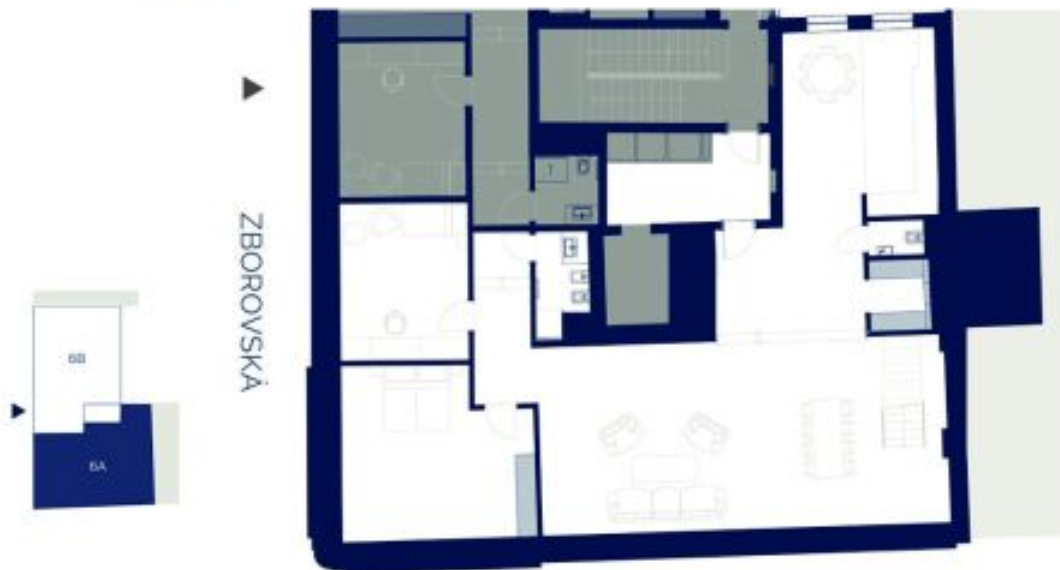
* Area of the unit according to the Civil Code. The area consists of the sum total area of the entire unit bounded by perimeter walls.

Apartment Three-bedroom (4+kk)

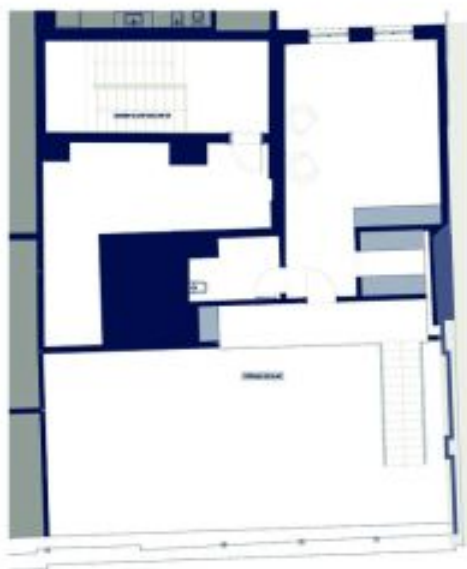
€ 5 398 | CZK 135 000

235 m², Prague 5, Malá Strana, Zborovská

6. PATRO – PŘÍZEMÍ BYTU



7. PATRO – PATRO BYTU



Celková výměra bytu	235 m²
Přízemí bytu	
Vstupní hala	15 m ²
Šatna	4 m ²
WC	2 m ²
Kuchyň	27 m ²
Technická místnost	3 m ²
Obývací pokoj	73 m ²
Chodba	9 m ²
Pokoj	28 m ²
Pokoj	19 m ²
Koupelna + WC	4 m ²
Patro bytu	
Galerie	9 m ²
Pokoj	33 m ²
Šatna	4 m ²
Koupelna + WC	5 m ²