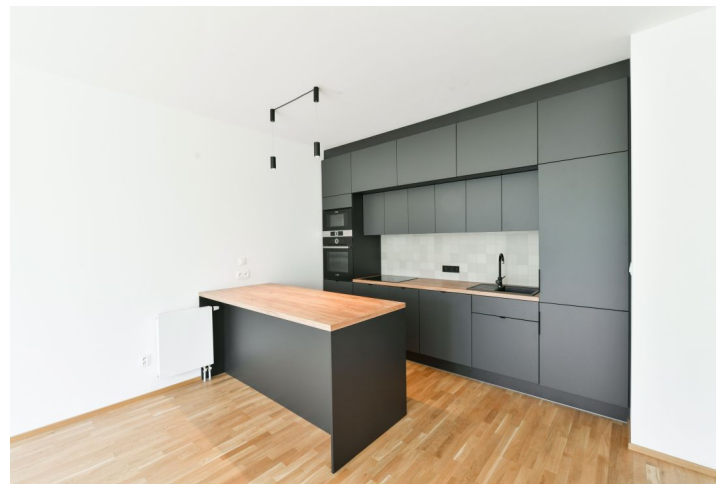


Apartment One-bedroom (2+kk)

Rented

54 m², Prague 10, Strašnice, K Červenému dvoru



Apartment One-bedroom (2+kk)

Rented

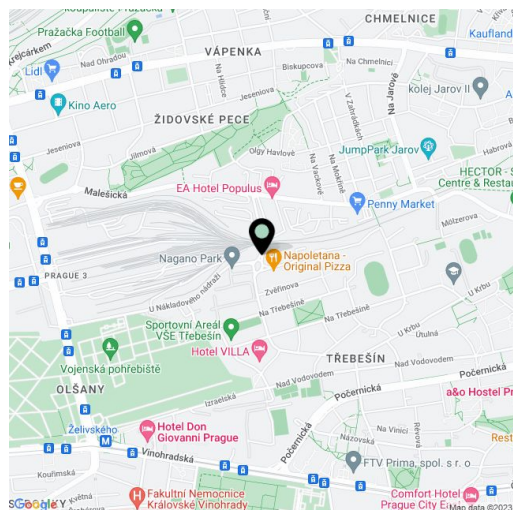
54 m², Prague 10, Strašnice, K Červenému dvoru

Total area	72 m ²
Floor area*	54 m ²
Terrace	18 m ²
Garden	54 m ²
Parking	Garage parking.
Garage	Yes
Cellar	Yes
PENB	B
Reference number	36423
Available from	Immediately

Benefiting from a terrace and a garden, this is a brand new 1-bedroom apartment on the ground floor of the newly built Červený dvůr residential complex. Located in a quiet and green residential neighborhood on the Vinohrady - Strašnice divide, with full amenities within easy reach and quick access to the city center - close to Strašnická and Želivského metro stations. Moments from a bus stop, near the Malešice Park and Forest, and the Hector sports grounds. The residence is situated well above the street level.

The apartment offers a living room with a fully fitted open plan kitchen, a bedroom with a **walk-in closet**, a bathroom including a bathtub and a toilet, a utility room, and an entrance hall. The **terrace** and **garden** are accessible from both the living room and the bedroom.

Green views, **heat recovery ventilation system**, **hardwood floors**, large format tiling, security entry door, oversized triple glazed windows, automatic external blinds, central heating - heat pump, Bosch kitchen appliances, dishwasher, microwave oven, alarm, **cellar**, chip entry. A **garage parking** space is included. Monthly deposit for service charges, water and heating: CZK 2500 for one person. Electricity is billed separately.



* Area of the unit according to the Civil Code. The area consists of the sum total area of the entire unit bounded by perimeter walls.