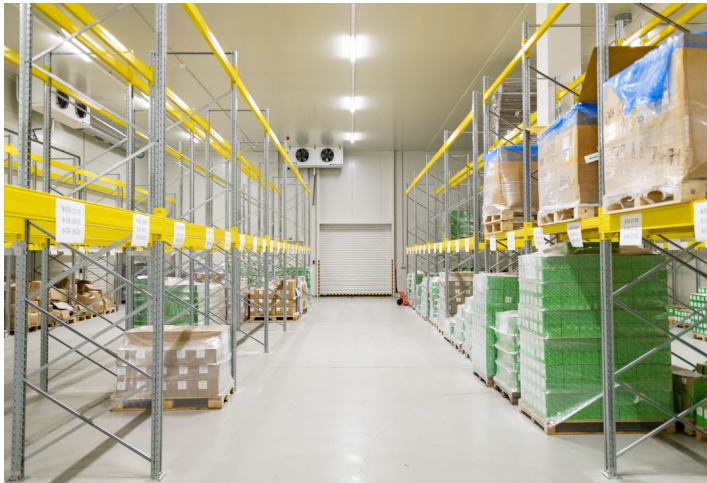


Logistic park

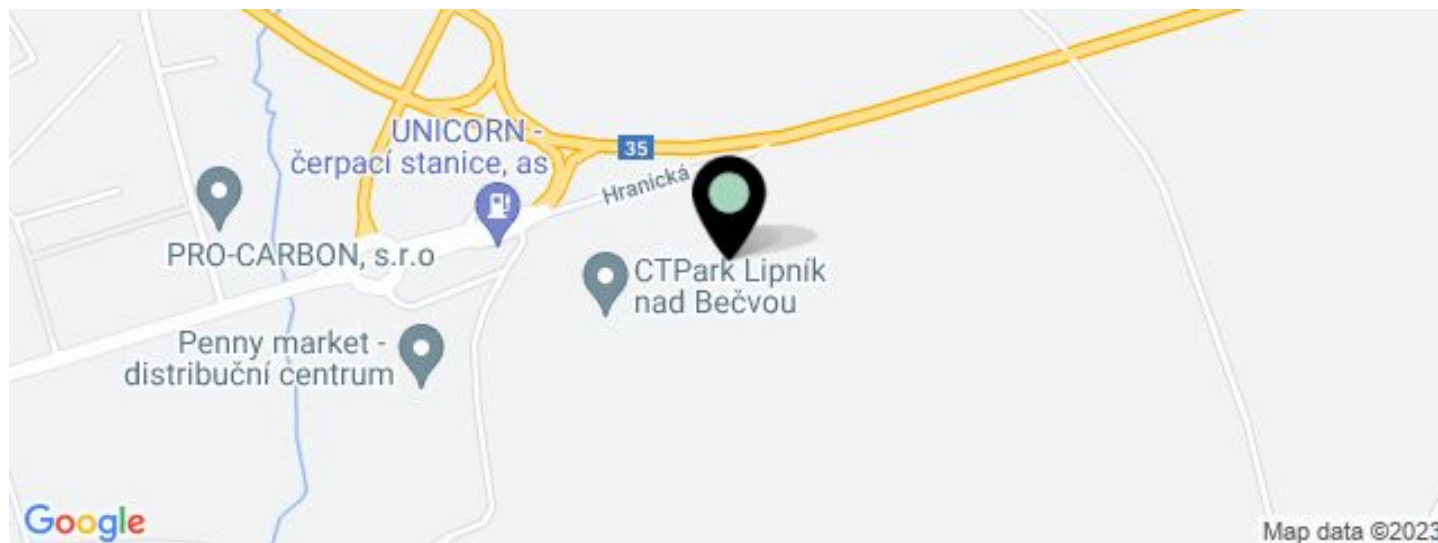
Ask for price

49 787 m², Přerov, Lipník nad Bečvou, Hranická



Logistic park

Ask for price

49 787 m², Přerov, Lipník nad Bečvou, Hranická

UNIT	AVAILABLE AREA	SERVICES	PARKING	MONTHLY RENT
Building L3 - planned	1 172 m ²	0 CZK monthly per m ²	Yes	Ask for price
Building L4- available	2 343 m ²	0 CZK monthly per m ²	Yes	Ask for price
Building L1- available	37 684 m ²	0 CZK monthly per m ²	Yes	Ask for price
Building L5- planned	8 791 m ²	0 CZK monthly per m ²	Yes	Ask for price

Logistic park

Ask for price49 787 m², Přerov, Lipník nad Bečvou, Hranická

Total area	49 787 m ²
Available area for rent	49 990 m ²
Ceiling height	10.5 m
Floor loading capacity	5 t/m ²
Column grid structure	—
Structure	Reinforced concrete structure
PENB	G
Reference number	36150

Logistic park offering warehouse, industrial and office space for lease. The premises are suitable for logistic centers and light manufacturing, offer a high standard of equipment, and can be designed based on specific requests and requirements. Thanks to its location the park is suitable for domestic distribution and production.

Location:

The park is located near the D1 motorway midway between Brno and Ostrava.

Features and Services:

- Flexible units (storage / office / light production / showroom)
- Onsite property management
- 24/7 security service and CCTV
- Park maintenance
- Sufficient parking space
- High standard of building

Industrial/Warehouse space:

- Dock levelers & loading ramps
- Dimension of entrance gate 4x4,5 m
- Floor loading capacity 5 T/sq.m
- Clear height 10,5 m
- Column grid structure 12x24 m
- LED Light
- Sprinkler system
- Utility connections (water, sewage, gas, electricity)

Office:

- Turn key office
- Clear height 2,75 m
- Air-conditioning
- External blinds

Lessee pays no commission.

Logistic park

Ask for price

49 787 m², Přerov, Lipník nad Bečvou, Hranická

