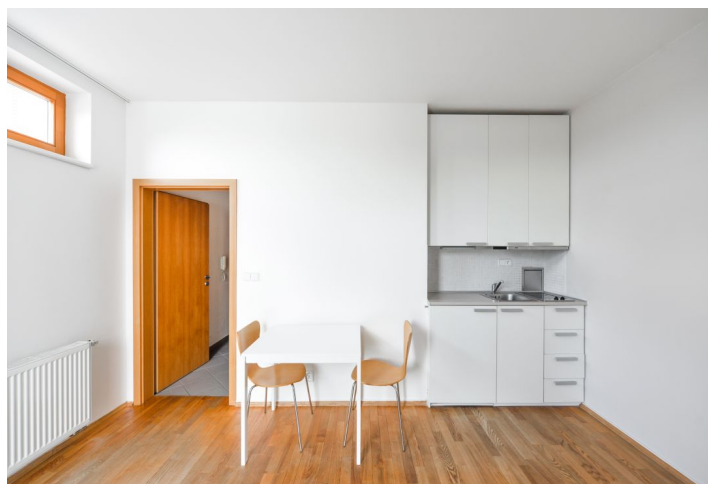


Apartment Studio (1+kk)

Rented

25 m², Prague 10, Vršovice, Rybalkova



Apartment Studio (1+kk)

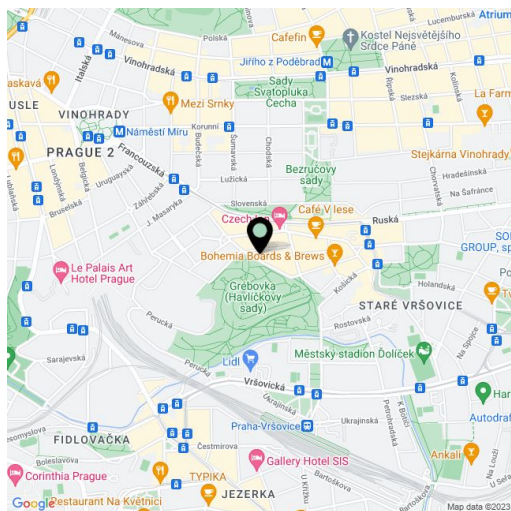
Rented25 m², Prague 10, Vršovice, Rybalkova

| | |
|------------------|-------------------|
| Total area | 28 m ² |
| Floor area* | 25 m ² |
| Balcony | 3 m ² |
| Parking | - |
| Cellar | - |
| PENB | C |
| Reference number | 35994 |
| Available from | Immediately |

Apartment steps from Havlíčkovy sady Park. This furnished renovated studio apartment with a balcony is situated on the 3rd floor of a completely refurbished residential building with a new lift. The building sits on a quiet street on the border of Vinohrady and Vršovice right next to a lovely park, with quick connections to the city center and full amenities within easy reach, and within walking distance of the Náměstí Míru metro station (line A).

The interior includes a bedroom with a fitted open plan kitchen and a balcony facing the green courtyard, a shower room with a toilet, and an entrance hall.

Solid wood parquet floors, tiles, floor-to-ceiling French window, central heating, refrigerator. Monthly deposit for service charges, water and heating and electricity: CZK 1500 - 2000.



* Area of the unit according to the Civil Code. The area consists of the sum total area of the entire unit bounded by perimeter walls.