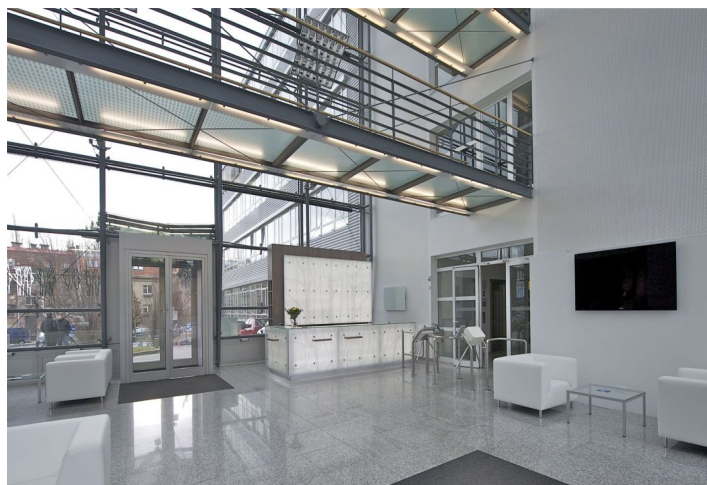




Office space

Prague 6, Dejvice, Evropská

Rented





Office space

Prague 6, Dejvice, Evropská

Rented

Service price	160 CZK monthly per m ²
Available area	85 m ²
Cellar	-
Parking	EUR 90 / ps / month
PENB	G
Reference number	35867

Office space for lease on the ground floor in an administrative complex consists of two buildings with four entrances offers office space for lease on 5 floors and with 415 underground parking spaces. Building is located near a major summer house and offers a range of services, such as a restaurant, cafe and fitness. There is also a shared terrace for relaxing.

Location:

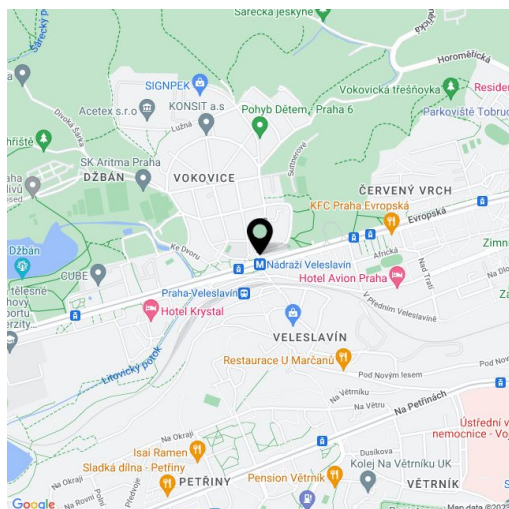
The complex is located on Evropská Street in Prague 6 and is very easy accessible by car and public transport – the Dejvická metro station (line A) is only two tram stops away. There is a tram stop directly outside the building. Easy access to Vaclav Havel Airport Prague and to the city center.

Features and Services:

- Main reception lobby with a coffee shop
- 24-hour security/CCTV
- Full-time on-site property management team
- Air conditioning
- Openable windows
- Raised floors/floor boxes
- Suspended ceilings
- Kitchenette and toilets
- Restaurant
- Common garden terrace adjacent to food services
- Full service fitness center (sauna, personal training, group exercise classes, corporate challenge programs)
- Underground parking and parking for visitors

Images might not accurately reflect the current state of the premises.

Rental and service charges listed without VAT. Lessee pays no commission.





Office space

Prague 6, Dejvice, Evropská

Rented

