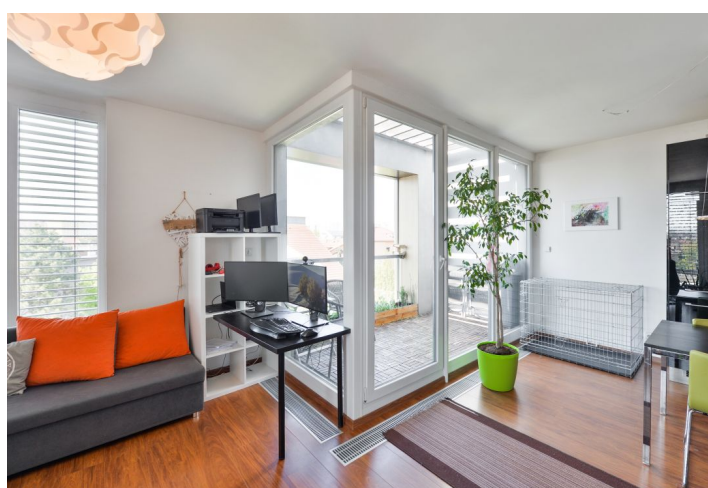


Apartment Two-bedroom (3+kk)

Rented

74 m², Prague 4, Libuš, Božejovická



Apartment Two-bedroom (3+kk)

Rented

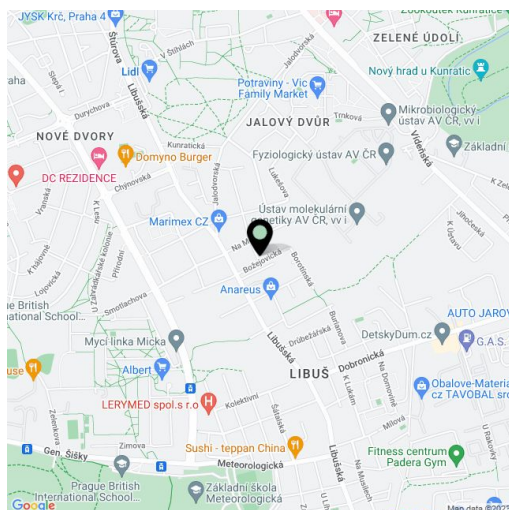
74 m², Prague 4, Libuš, Božejovická

| | |
|------------------|--------------------------|
| Total area | 81 m ² |
| Floor area* | 74 m ² |
| Loggia | 7 m ² |
| Parking | A covered parking space. |
| Cellar | Yes |
| PENB | C |
| Reference number | 35648 |
| Available from | Immediately |

This fully furnished 2-bedroom apartment with an enclosed balcony is situated on the second floor in a modern gated residential project with parking and a landscaped courtyard garden, in a quiet and green residential neighborhood in Libuš, Prague 4. Location with full amenities within easy reach, near the Kunratický Forest, convenient to the PBS international school (the Prague British School). A bus stop is 100 m from the building and the ride to Kačerov metro takes about ten minutes.

The interior features 2 separate bedrooms, a living room with a fully fitted open plan kitchen and access to the **enclosed balcony**, a bathroom with a bathtub, a separate toilet with a bidet shower, a utility room, and an entrance hall.

Green views, laminated floors, tiles, security entry door, French windows, automatic external blinds, washing machine, dishwasher, induction cooktop, microwave oven, **cellar**. No lift. A **covered parking space** is included. Deposit for service charges, water and heating: CZK 2600/month. Deposit for electricity: CZK 1000/month.



* Area of the unit according to the Civil Code. The area consists of the sum total area of the entire unit bounded by perimeter walls.