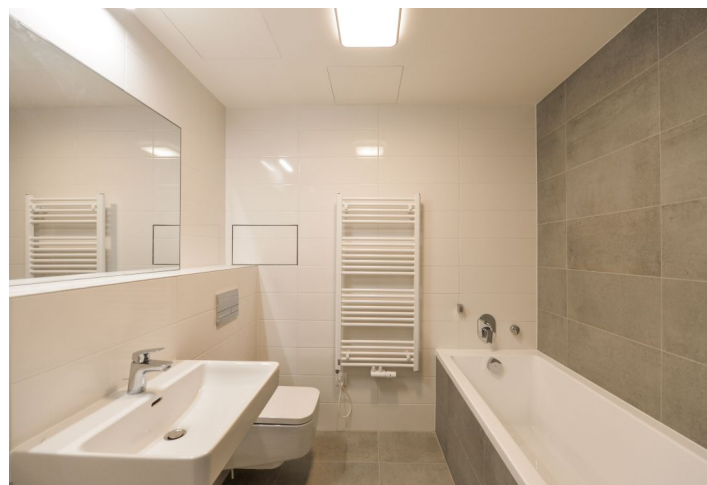


## Apartment One-bedroom (2+kk)

Rented

62.2 m<sup>2</sup>, Prague 5, Košíře, Naskové



## Apartment One-bedroom (2+kk)

Rented

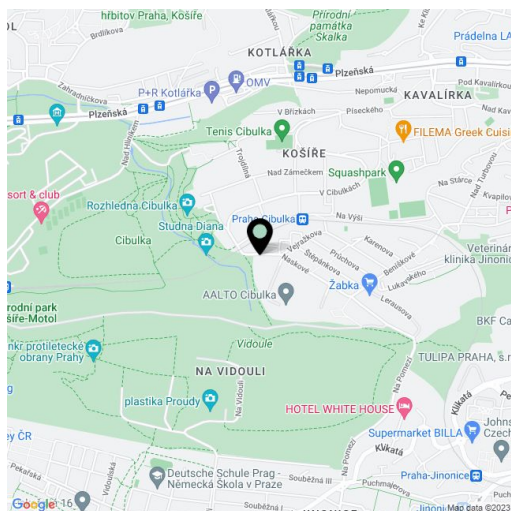
62.2 m<sup>2</sup>, Prague 5, Košíře, Naskové

Total area	69 m <sup>2</sup>
Floor area*	62 m <sup>2</sup>
Balcony	7 m <sup>2</sup>
Parking	A garage parking space is included.
Garage	Yes
Cellar	Yes
PENB	B
Reference number	35589
Available from	Immediately

Benefiting from a wonderful green location, this is a brand new furnished 1-bedroom apartment with a south facing balcony, on the 3rd floor in a newly built residential project with underground parking and a landscaped courtyard with water features. Located on the very edge of the Vidoule natural preserve, near the Cibulka forest park, in a quiet residential area within easy reach of full amenities and services, close to Jinonice metro station, and within quick reach of the Anděl / Nový Smíchov commercial center. Conveniently located for the German School.

The apartment features a living room with a fully fitted open plan kitchen and a **balcony** facing the park, a bedroom with built-in wardrobes, a bathroom (bathtub, toilet), a laundry room, and an entrance hall with built-in wardrobes.

**Hardwood floors**, large format tiling, security entry door, large wooden windows, automatic external blinds, central heating, washer / dryer, dishwasher, induction cooktop, video entry phone, **cellar**, lift. A **garage parking** space is included. Monthly deposit for service charges, water and heating: CZK 3500. Electricity will be transferred to the tenant.



\* Area of the unit according to the Civil Code. The area consists of the sum total area of the entire unit bounded by perimeter walls.

## Apartment One-bedroom (2+kk)

Rented

62.2 m<sup>2</sup>, Prague 5, Košíře, Naskové

