

Office space

Rented

Prague 1, Staré Město, náměstí Republiky



Office space

Rented

Prague 1, Staré Město, náměstí Republiky

Service price	130 CZK monthly per m ²
Available area	3 956 m ²
Cellar	-
Terrace	97 m ²
Parking	-
PENB	C
Reference number	35562

Office space for short-term rent until December 2019 in an administrative building on Náměstí Republiky Square. The building was built in 1905 by the architects Adolf Foehrer and Alfons Wertmuller. The area benefits from its central location and it is also the business and financial center of the city with direct connections to important local and long-distance transport networks.

Location:

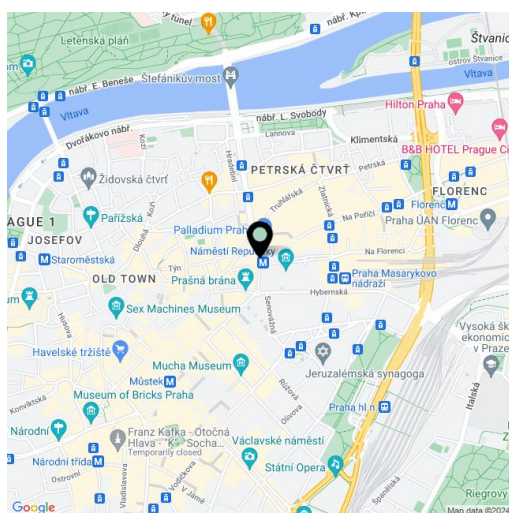
The building is located right next to a tram stop, close to the Namesti Republiky metro station (line B), the Masaryk train station, and the Na Florenci central bus station. It also has very good connections to the Václav Havel International Airport Prague and the D1 and D8 motorways. The Palladium shopping center and the Kotva department store are close-by.

Facilities and services:

- 24/7 reception
- 2 passenger lifts
- Available storage space
- Raised floors with floor boxes
- Openable windows
- Modern LED backlight
- Terrace
- Parking in the adjacent shopping centers

Available from Q4 2024.

Rental and service charges listed without VAT. Lessee pays no commission.



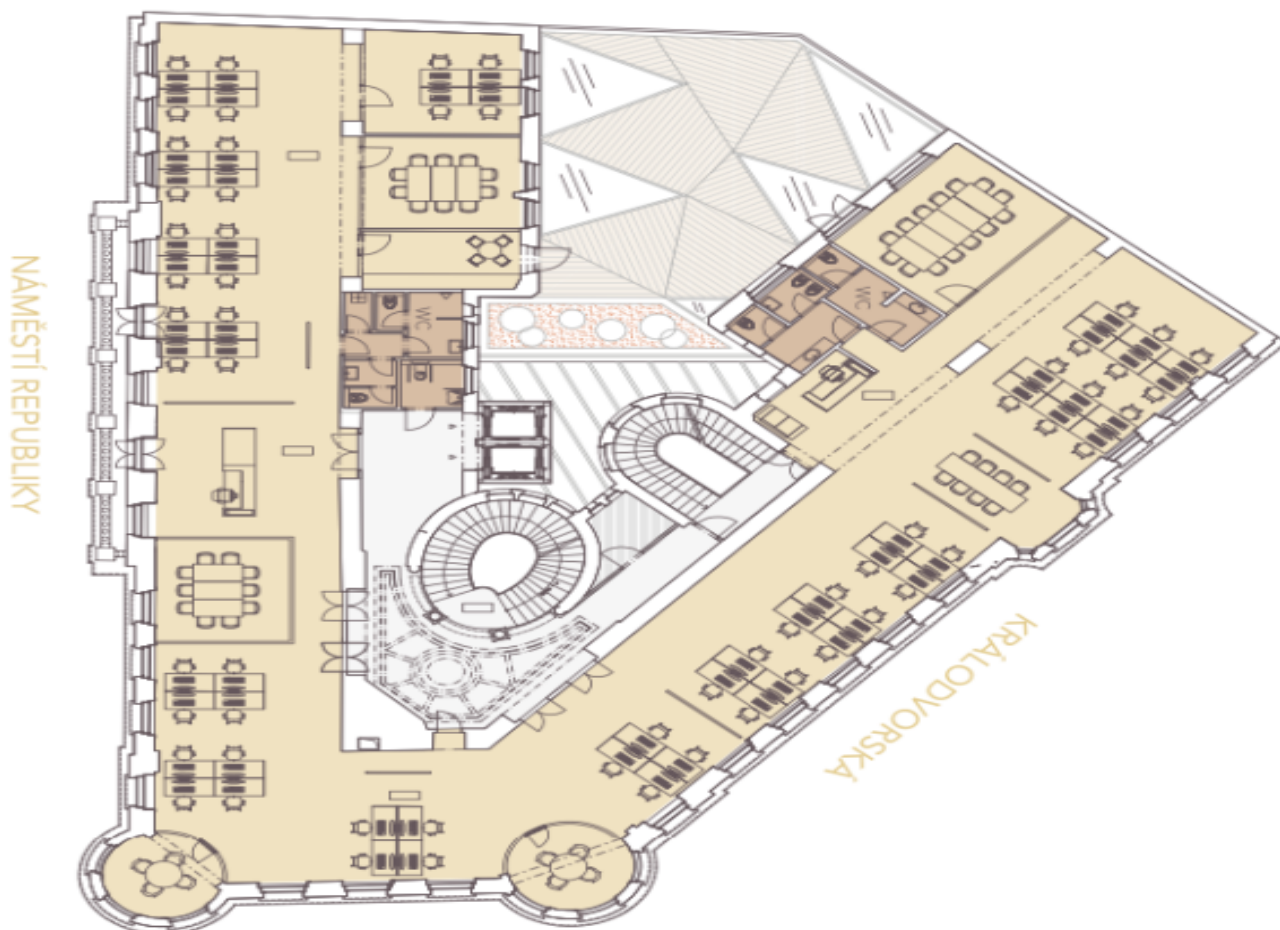
Office space

Prague 1, Staré Město, náměstí Republiky

Rented

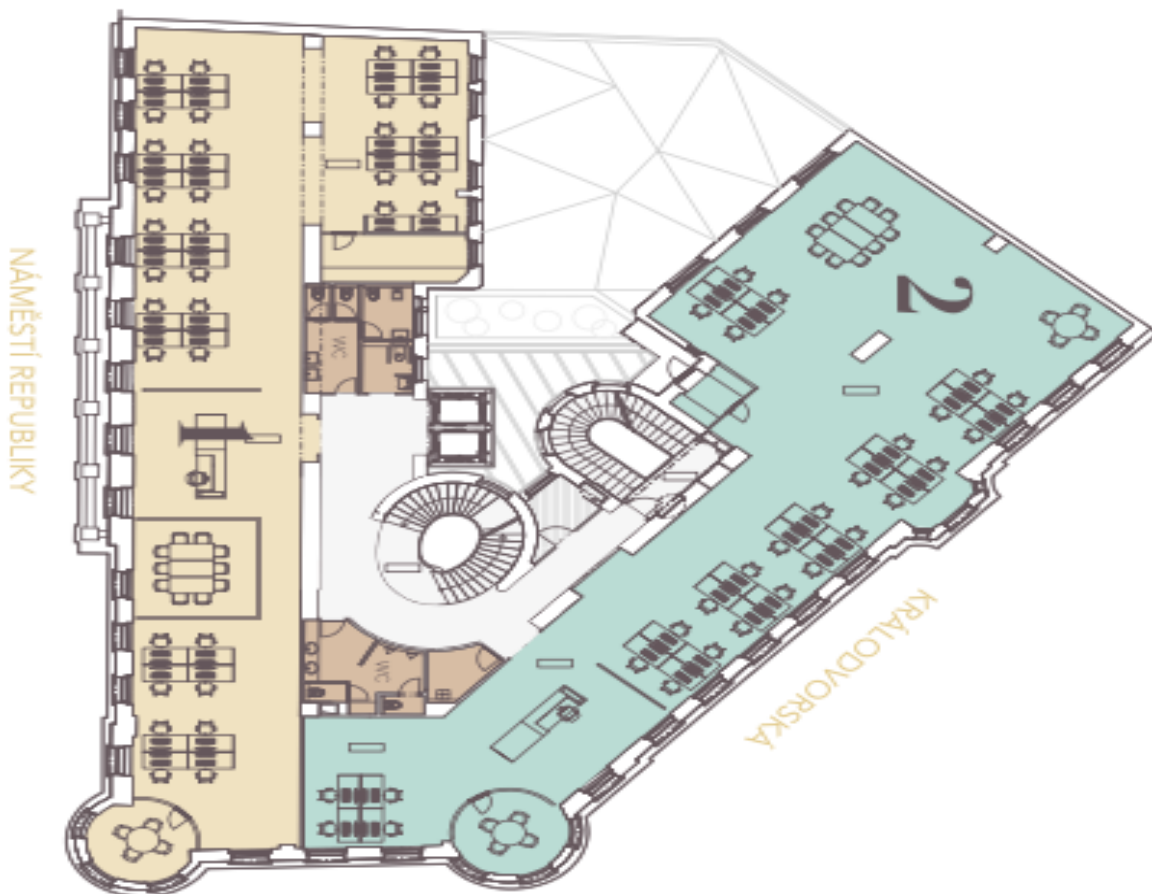
Second floor

OFFICE 608 sqm
TERRACE 105 sqm



Third floor

OFFICE 1	306 sqm
OFFICE 2	328 sqm



Office space

Prague 1, Staré Město, náměstí Republiky

Rented

Fourth floor

OFFICE 1 298 sqm
OFFICE 2 316 sqm



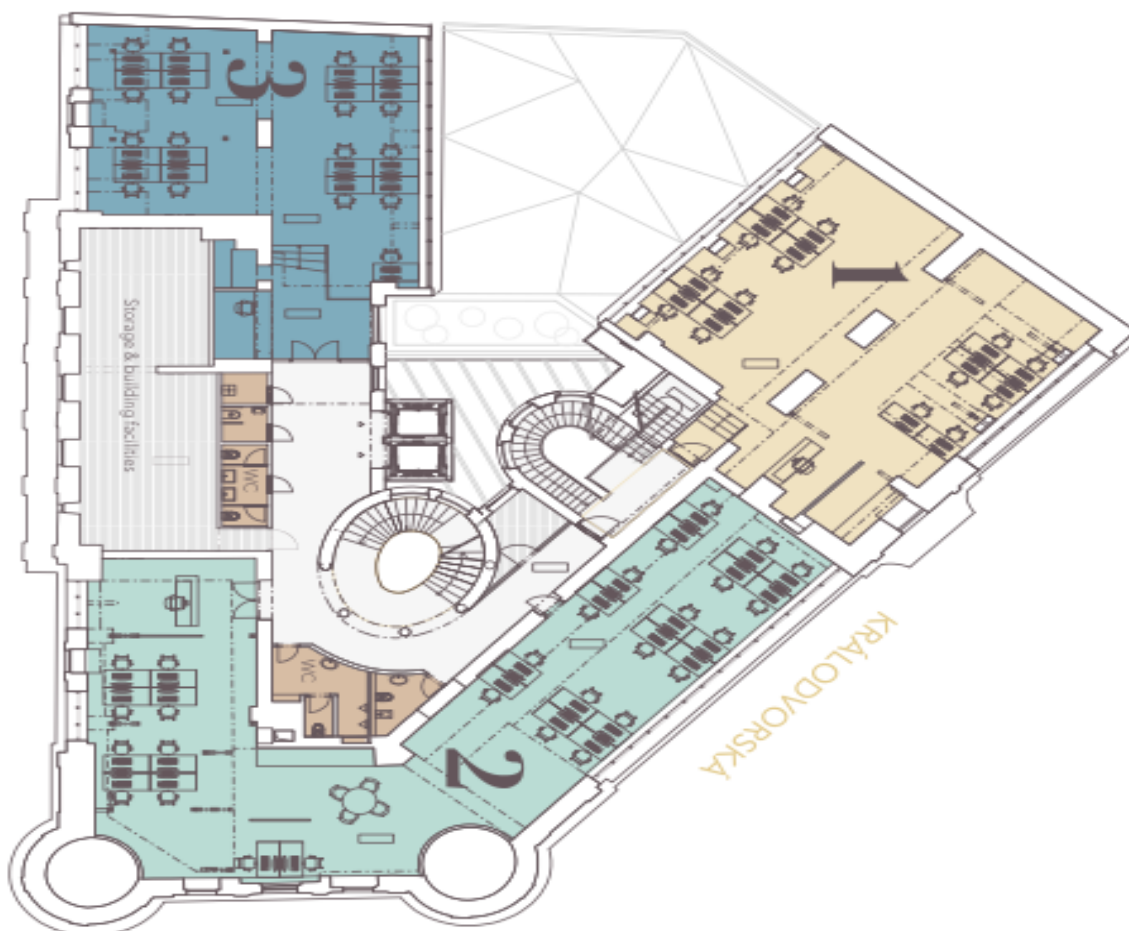
Office space

Rented

Prague 1, Staré Město, náměstí Republiky

Fifth floor

OFFICE 1	150 sqm
OFFICE 2	214 sqm
OFFICE 3	133 sqm



Sixth floor

OFFICE 1

275 sqm

