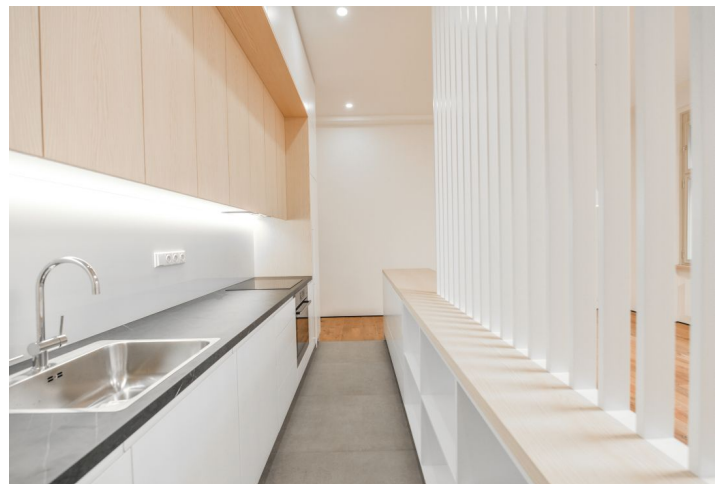


## Apartment One-bedroom (2+kk)

Rented

84 m<sup>2</sup>, Prague 8, Karlín, Šaldova



# Apartment One-bedroom (2+kk)

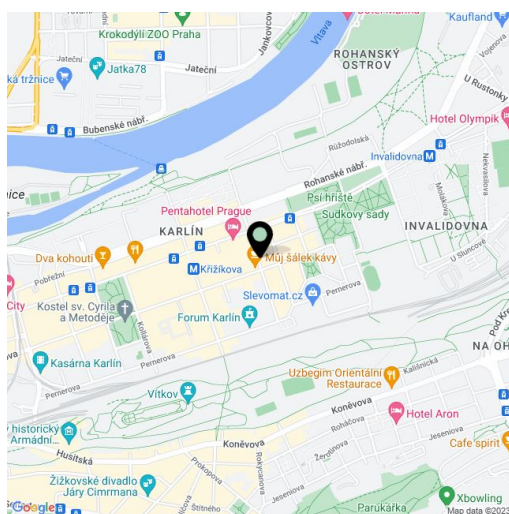
**Rented**84 m<sup>2</sup>, Prague 8, Karlín, Šaldova

Total area	84 m <sup>2</sup>
Parking	-
Cellar	-
PENB	G
Reference number	35488
Available from	Immediately

This spacious renovated 1-bedroom apartment is on the third floor of a refurbished residential building with an elevator, beautifully located in the rapidly developing district of Prague 8 - Karlín, a few meters from a tram stop and two blocks from the Křižíkova metro station. Within walking distance of the Karlín business center, great amenities and a number of cafes, bistros, and restaurants. The city center is accessible within a few minutes by tram or metro. You can also use the nearby bike path along the Vltava river.

The apartment features a large living room with a dining area and a fully fitted open-plan kitchen, one bedroom, a bathroom with a bathtub, toilet, and bidet, a second bathroom with a toilet, and an entrance hall.

Wooden floors, tiles, made-to-measure built-in wardrobes, plenty of storage space, underfloor heating in the bathroom, security entry door, washer, dishwasher. Balcony shared with the neighbouring apartment. Monthly deposit for common building charges and utilities CZK 6,000 for 2 persons.



\* Area of the unit according to the Civil Code. The area consists of the sum total area of the entire unit bounded by perimeter walls.