



## Apartment One-bedroom (2+1)

Rented

76 m<sup>2</sup>, Prague 6, Dejvice, Zemědělská





## Apartment One-bedroom (2+1)

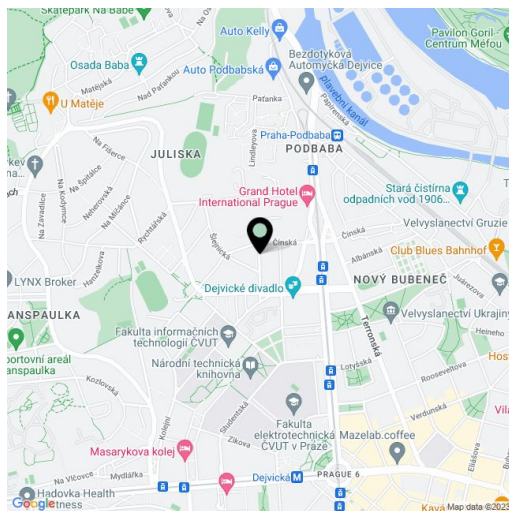
**Rented**76 m<sup>2</sup>, Prague 6, Dejvice, Zemědělská

Total area	82 m <sup>2</sup>
Floor area*	76 m <sup>2</sup>
Balcony	6 m <sup>2</sup>
Parking	-
Cellar	-
PENB	E
Reference number	35486
Available from	Immediately

This renovated, partly furnished 1-bedroom apartment with a terrace and views of the green courtyard is on the upper ground floor of a renovated building that is part of the Garden House project. Located on a quiet tree-lined street in an attractive part of Dejvice, a short walk to the Dejvická metro station, and just a few steps to the Czech Technical University campus. Tram and bus connections, within easy reach of full public amenities, the Vltava embankment and Stromovka Park, and convenient to the airport and numerous international schools.

The interior offers living room with access to spacious terrace, fully fitted kitchen with living space, 1 bedroom, bathroom with bathtub, 2 wash-basins and toilet, and entrance hall.

Built-in wardrobes, wooden floors, gas boiler, washer, dishwasher, dryer, video entry phone, security entrance door. Shared landscaped garden available. Common building charges CZK 1800/month. Electricity and gas approx. CZK 2,100/month.



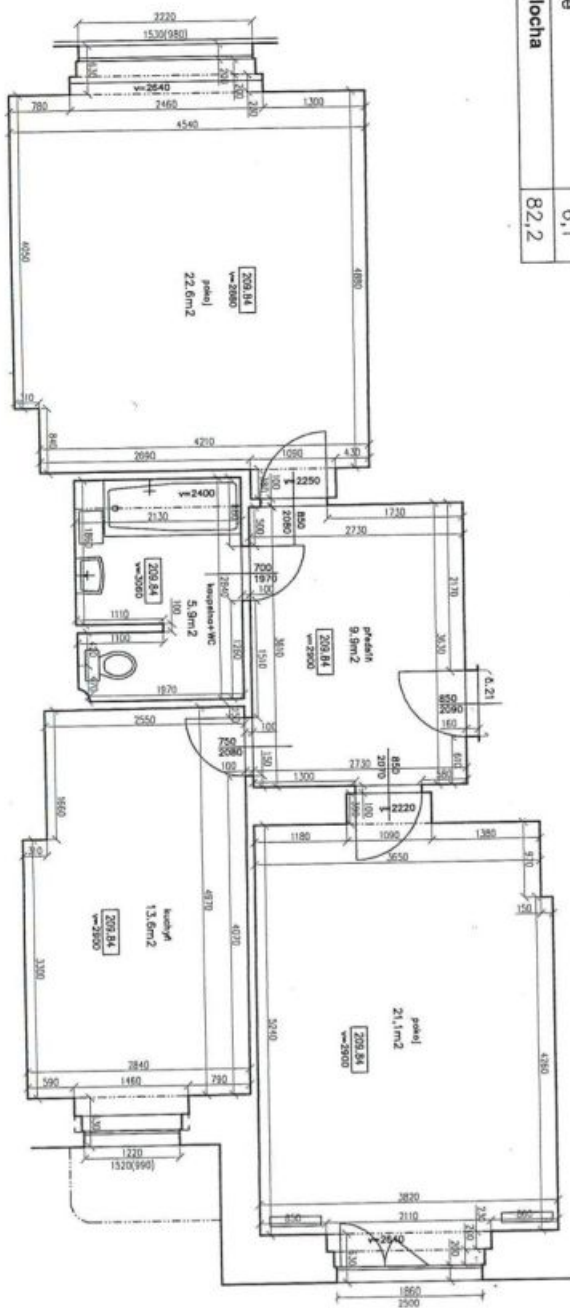
\* Area of the unit according to the Civil Code. The area consists of the sum total area of the entire unit bounded by perimeter walls.



# Apartment One-bedroom (2+1)

76 m<sup>2</sup>, Prague 6, Dejvice, Zemědělská

Rented



Místnost	m <sup>2</sup>
předstíh	9,9
koupelna+WC	5,9
kuchyně	13,6
pokoj	21,1
pokoj	22,6
svíslé nosné a nenosné konstrukce uvnitř jednotky	3,0
Podlahová plocha	76,1
sklepní kóje	6,1
Celková plocha	82,2