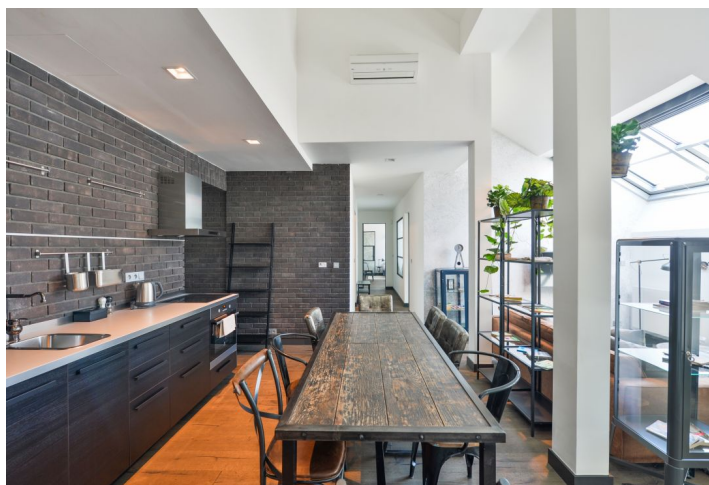
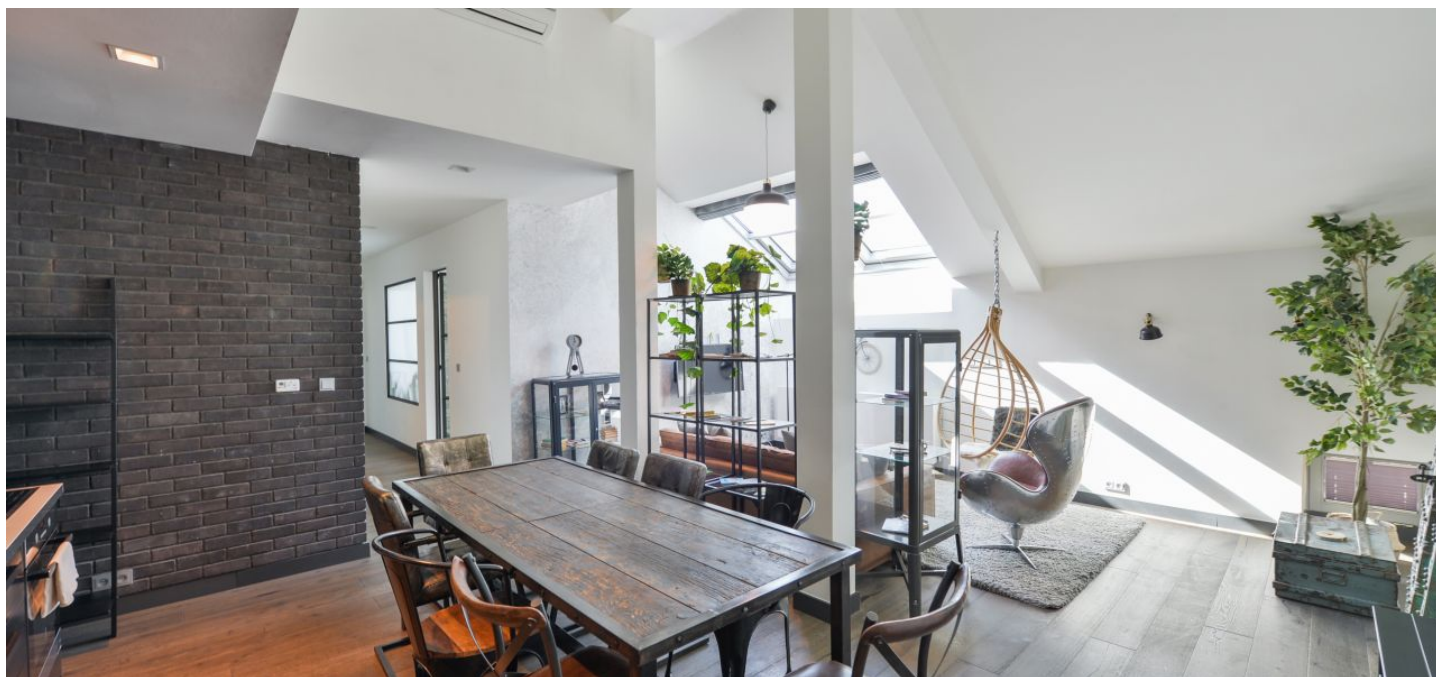


Apartment Two-bedroom (3+kk)

Rented

120 m², Prague 1, Nové Město, Revoluční



Apartment Two-bedroom (3+kk)

Rented

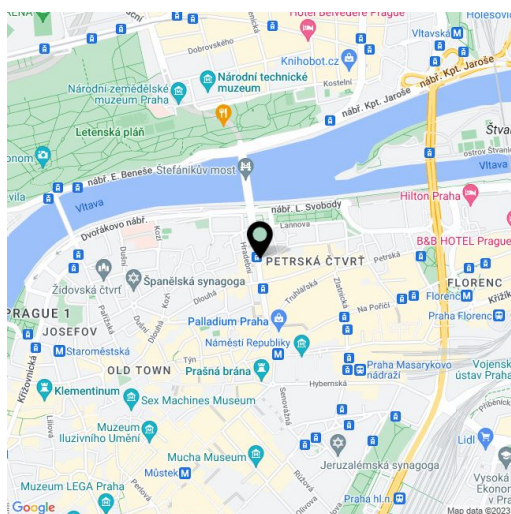
120 m², Prague 1, Nové Město, Revoluční

Total area	120 m ²
Parking	-
Cellar	-
PENB	D
Reference number	35360
Available from	Immediately

This modern, fully air-conditioned 2-bedroom 2-bathroom attic apartment complete with stylish furniture is on the 5th floor in a fully renovated residential building with a lift. Set just a few steps from the náměstí Republiky Square, within easy reach of complete amenities incl. the Palladium and Kotva shopping malls, the Divadlo v Dlouhé Theater, quality restaurants, cafes, and clubs. The Náměstí Republiky metro station (line B) is just two minutes walk away, there is a tram stop steps from the building, and it is a short walk to the Lannova Park, the courtyard garden in the Convent of St. Agnes and the Letná Park on the opposite bank of the Vitava River.

The interior features a living room with a dining area and a fully fitted open plan kitchen, a master bedroom with a **walk-in closet** and an en-suite bathroom (bathtub, walk-in shower, bidet, toilet + storage room), a family bathroom (bathtub, bidet, toilet), and a **walk-in closet** / laundry room.

Air-conditioning, hardwood floors, tiles, atelier windows, gas heating, washer, dryer, dishwasher, microwave oven, kitchenware, iron and ironing board, TV, alarm. Monthly deposit for service charges and water: CZK 1000/person. Deposit for gas and electricity: CZK 3500/month.



* Area of the unit according to the Civil Code. The area consists of the sum total area of the entire unit bounded by perimeter walls.