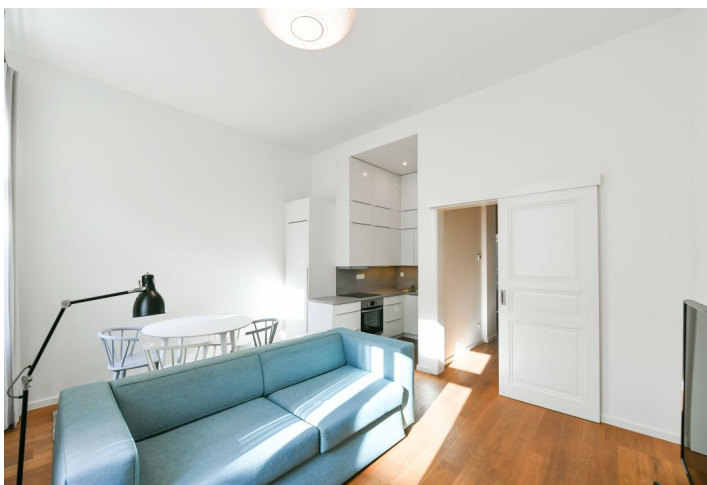


## Apartment One-bedroom (2+kk)

Rented

43 m<sup>2</sup>, Prague 1, Malá Strana, Šeříkova



# Apartment One-bedroom (2+kk)

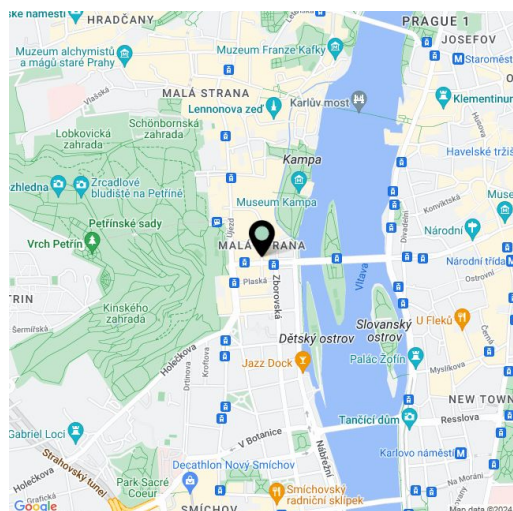
**Rented**43 m<sup>2</sup>, Prague 1, Malá Strana, Šeříkova

Total area	47 m <sup>2</sup>
Floor area*	43 m <sup>2</sup>
Balcony	4 m <sup>2</sup>
Parking	-
Cellar	-
Service price	Deposit for services and water CZK 3,000/month. Gas and electricity - transferred to the tenant.
PENB	G
Reference number	35325
Available from	Immediately

Benefiting from a balcony, this fully refurbished, fully furnished apartment is on the 3rd floor of the Chateau Savoy Residence, a completely renovated traditional building with an elevator and a shared landscaped courtyard garden. Nicely located in the heart of the Malá Strana neighborhood, near two large parks (Kampa Island and Petřín), a few steps from the Vltava riverbank and the nearest tram stop (one short stop to the National Theater), near the Prague Castle. Full amenities are available within easy reach incl. quality restaurants, bistros, cafes, and more.

The interior features a living room with a fully fitted open plan kitchen and dining area, one bedroom with a large French window open onto the balcony facing the green courtyard, a bathroom with a walk-in shower, a separate toilet, and an entrance hall.

Quality materials and finishes, high ceilings, large windows, hardwood floors, tiles, built-in wardrobe in the bedroom, built-in storage, security entry door, sliding interior doors, sofa bed, gas boiler, washer, induction cooktop, TV, video entry phone.



\* Area of the unit according to the Civil Code. The area consists of the sum total area of the entire unit bounded by perimeter walls.