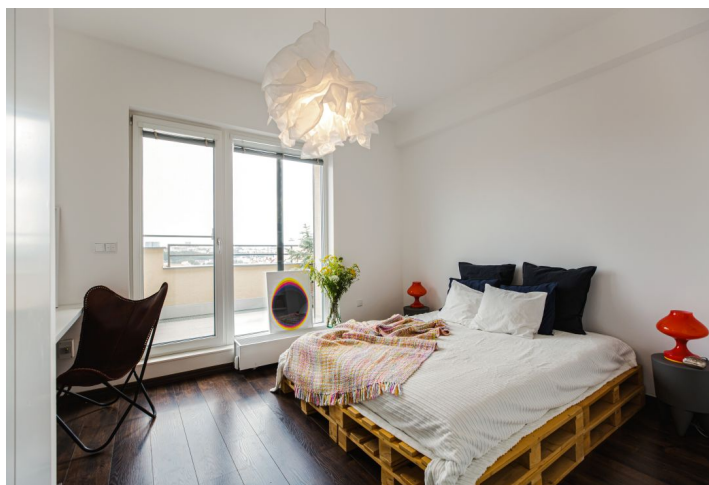




## Apartment One-bedroom (2+kk)

Sold

42 m<sup>2</sup>, Prague 10, Vršovice, Bulharská





## Apartment One-bedroom (2+kk)

**Sold**42 m<sup>2</sup>, Prague 10, Vršovice, Bulharská

Total area	60 m <sup>2</sup>
Floor area*	42 m <sup>2</sup>
Terrace	18 m <sup>2</sup>
Parking	-
Cellar	Yes
PENB	G
Reference number	35114

This fully refurbished design apartment with an 18 sq. m. terrace is located on the topmost 6th floor of a renovated apartment building with a front garden and an elevator in a quiet residential area on the border of Vinohrady and Vršovice, a few minutes' walk from Heroldovy Sady Park and the park on Svatopluk Čech Square, or the iconic Krymská Street. The nice location with excellent amenities in the area and quick access to the city center is only a few minutes' walk from the Vršovické náměstí tram stop with direct access to the Náměstí Míru and I. P. Pavlova metro stations.

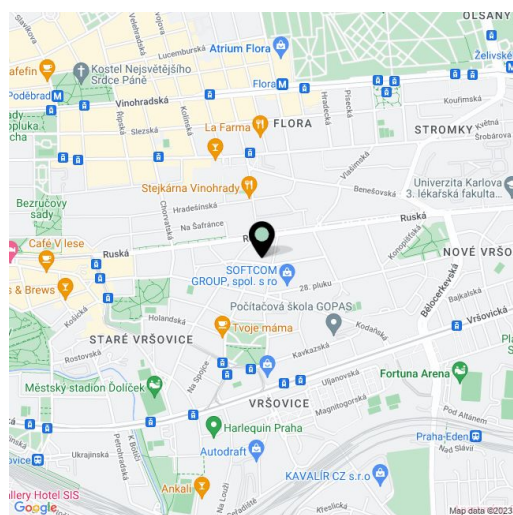
The layout consists of a living room with a fully equipped open plan kitchen, an **air-conditioned bedroom** with **built-in wardrobes**, a double-sided work corner, a bathroom with a shower, a guest toilet with a bidet shower, an entry hall with built-in wardrobes, and a utility room. **The terrace is accessible from both main rooms.**

Large storage space above the entry hall, vinyl flooring, tiles, security entry door, central electric heating, **electric exterior blinds**, dishwasher, microwave, mosquito nets, southwest-facing terrace with plants, cellar, electronic entrance, shared storage on the mezzanine of the building. Common building charges, water, and heating approx. CZK 3,900 per month including the repair fund (for 2 persons).

Interior 42 m<sup>2</sup>, terrace 18 m<sup>2</sup>.

**The apartment is currently rented until the end of August 2020 for a monthly rent of CZK 23,000.**

In addition to regular property viewings, we also offer **real time video viewings** via WhatsApp, FaceTime, Messenger, Skype, and other apps.



\* Area of the unit according to the Civil Code. The area consists of the sum total area of the entire unit bounded by perimeter walls.

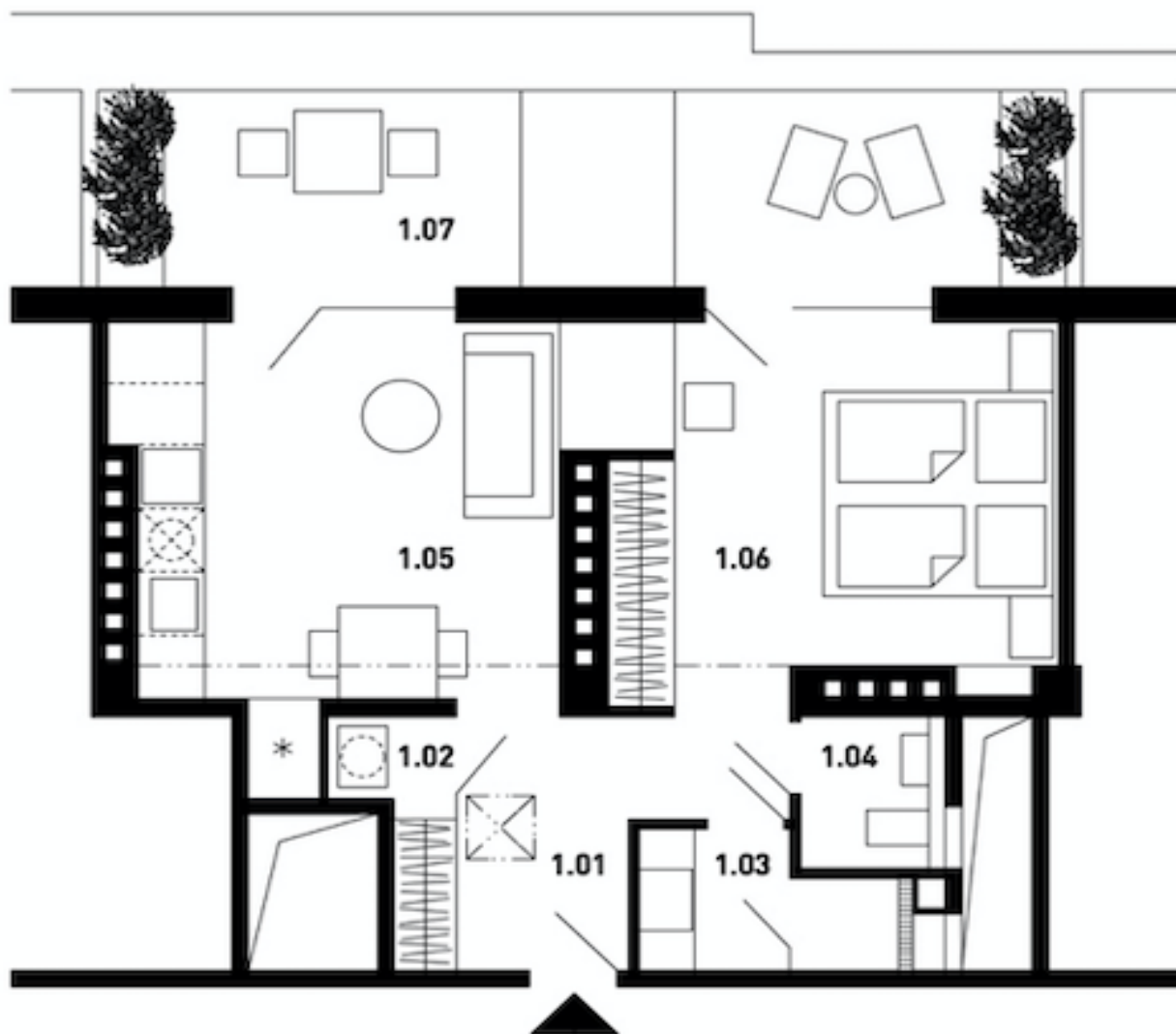


## Apartment One-bedroom (2+kk)

Sold

42 m<sup>2</sup>, Prague 10, Vršovice, Bulharská

# NOVÝ STAV



- 1.01 CHODBA
- 1.02 KOMORA
- 1.03 KOUPELNA
- 1.04 WC
- 1.05 OBÝVACÍ PROSTOR
- 1.06 LOŽNICE
- 1.07 TERASA

