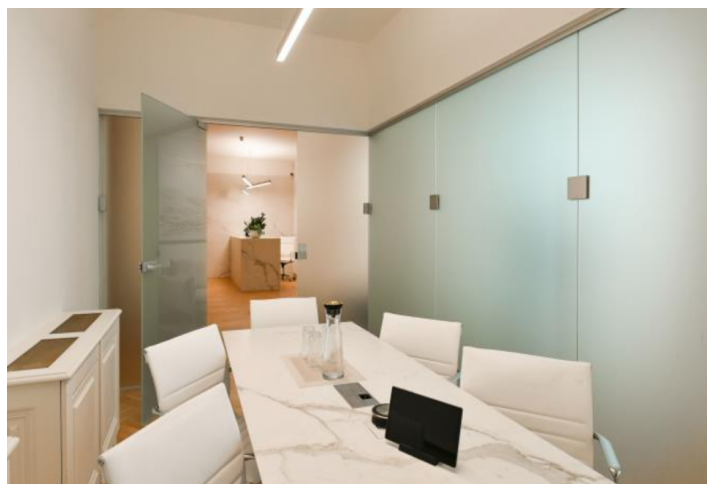


## Office space

Rented

Prague 1, Nové Město, Václavské náměstí



## Office space

Rented

Prague 1, Nové Město, Václavské náměstí

<b>Service price</b>	132 CZK monthly per m <sup>2</sup>
<b>Available area</b>	245 m <sup>2</sup>
<b>Cellar</b>	-
<b>Parking</b>	EUR 290 / ps / month - 2 parking spaces
<b>PENB</b>	G
<b>Reference number</b>	34920

Modern office space in the prestigious Forum building in Wenceslas Square, restored and refurbished to the highest international standards. Oak parquet floors, full air-conditioning, floor boxes, card access control system, flexible layout premises and nice stucco ceilings. Server room with cooling is part of premises.

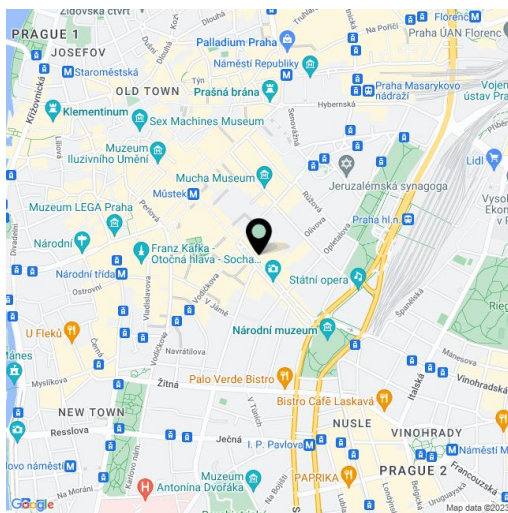
**Location:**

The building is situated in an attractive location in the center of Prague, with good accessibility by car and public transport – the Muzeum (line A, C) and Můstek (line A, B) metro stations and tram stops nearby. Within walking distance to Main Railway Station.

**Features and Services:**

- 4 pipe air-conditioning
- Parquet floor
- Raised floor
- Underfloor trunking with floor-boxes
- Lights
- Toilets and kitchenette
- Card access control system
- 24 hours reception and security
- Representative receptions
- 2 high speeds lift
- CCTV
- 2 parking spaces

Rental and service charges are listed without VAT. Lessee pays no commission.



## Wenceslas Square

