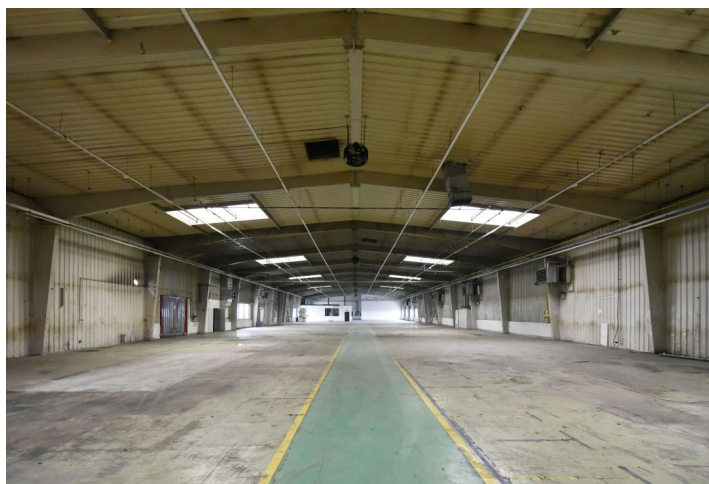


## Industrial park

Ask for price

4 353 m<sup>2</sup>, Nymburk, Lysá nad Labem, Mírová



## Industrial park

[Ask for price](#)4 353 m<sup>2</sup>, Nymburk, Lysá nad Labem, Mírová

<b>Total area</b>	4 353 m <sup>2</sup>
<b>Available area for rent</b>	2 373 m <sup>2</sup>
<b>Ceiling height</b>	5 m
<b>Floor loading capacity</b>	—
<b>Column grid structure</b>	—
<b>Structure</b>	Reinforced concrete structure
<b>PENB</b>	G
<b>Reference number</b>	34820

Industrial park offering industrial and office space for lease. The premises are suitable for light manufacturing.

**Location:**

The park is located near the D10 and D11 motorways connecting Prague and the north-east of the Czech Republic.

**Features and Services:**

- Park maintenance
- Sufficient parking space

**Industrial space:**

- 9 x Docks
- 2 x drive in
- Clear height 5 - 6,5 m
- Distribution of pressurised air (hall B)

**Office:**

- Office space can be customized according to the tenant's requirements

Lessee pays no commission.



# Industrial park

Ask for price

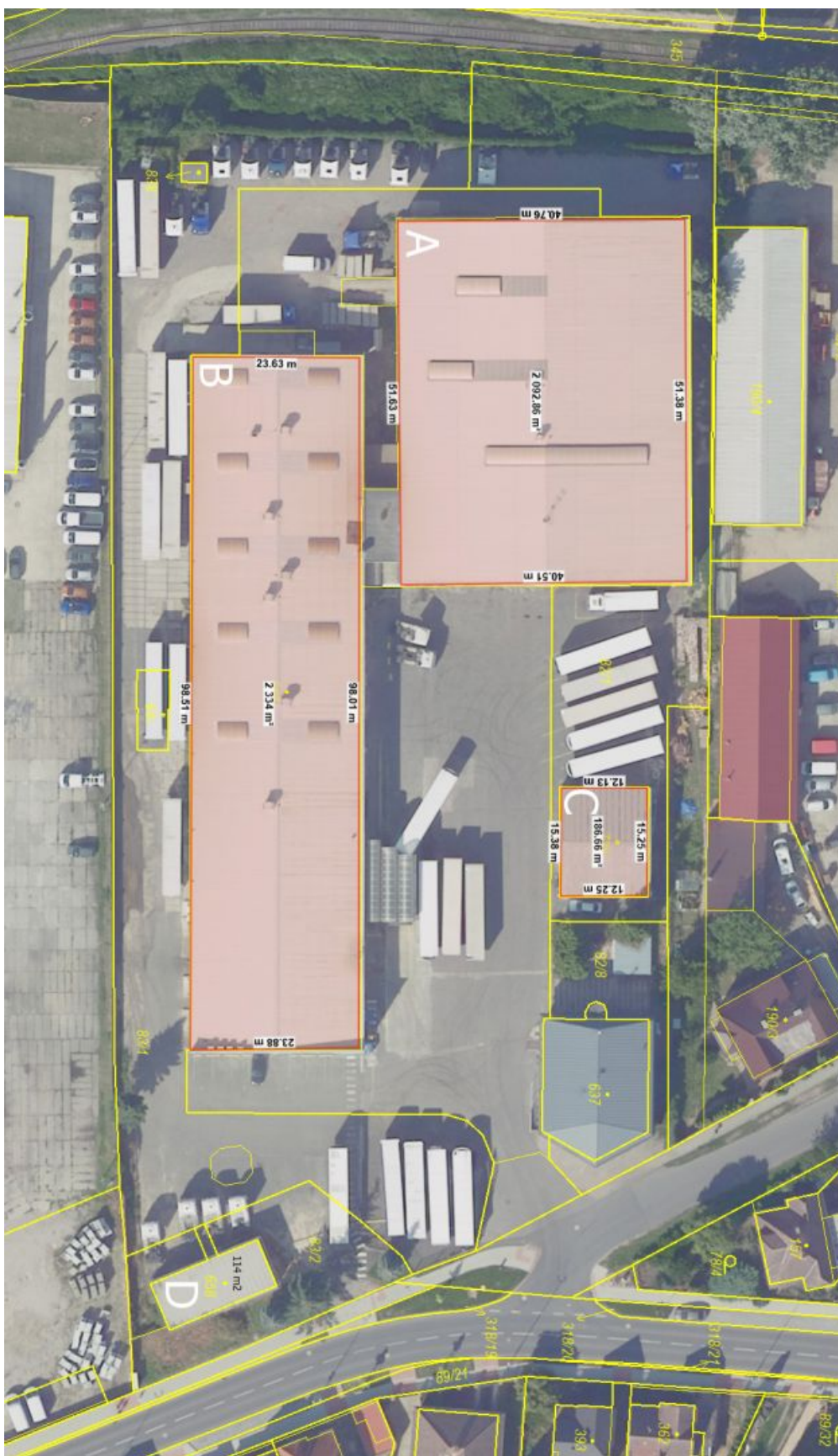
4 353 m<sup>2</sup>, Nymburk, Lysá nad Labem, Mírová



# Industrial park

Ask for price

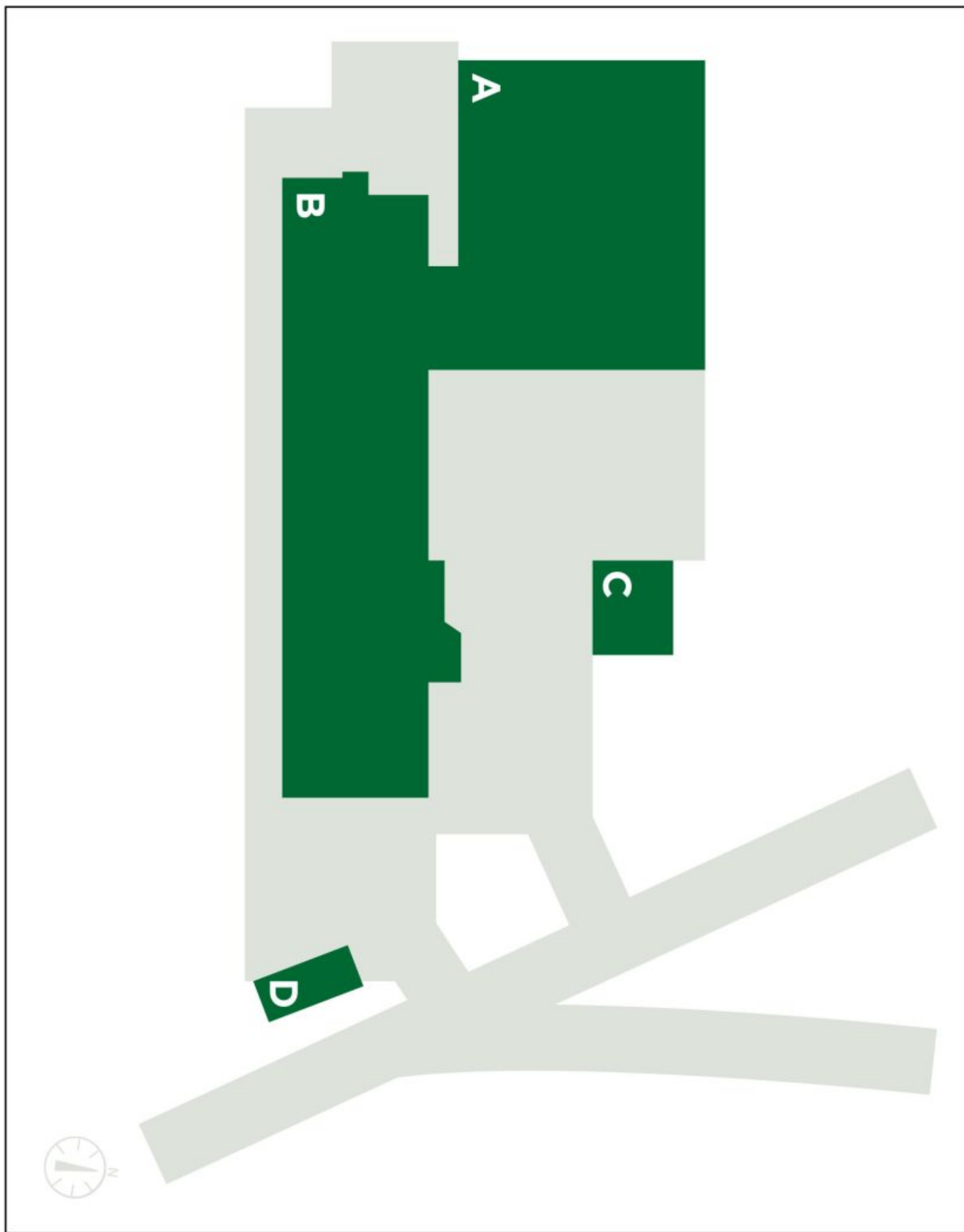
4 353 m<sup>2</sup>, Nymburk, Lysá nad Labem, Mírová



## Industrial park

Ask for price

4 353 m<sup>2</sup>, Nymburk, Lysá nad Labem, Mírová





# Industrial park

Ask for price

4 353 m<sup>2</sup>, Nymburk, Lysá nad Labem, Mírová

