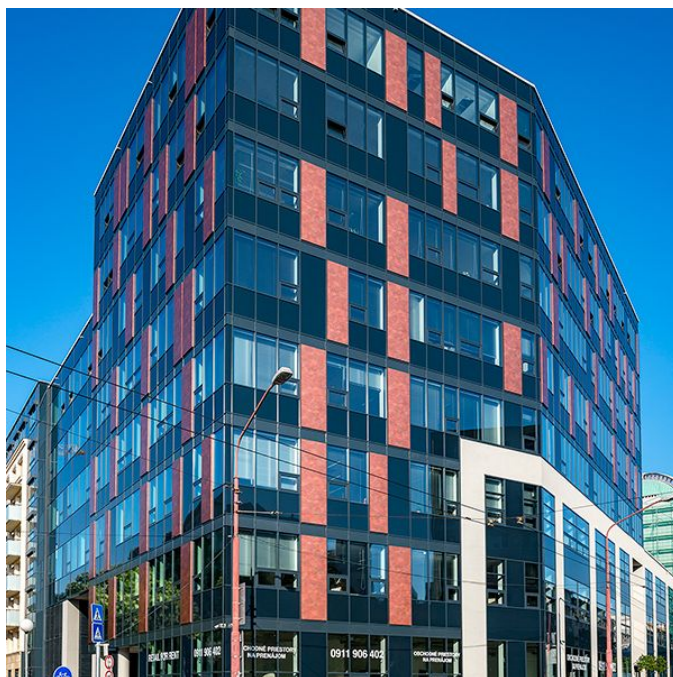


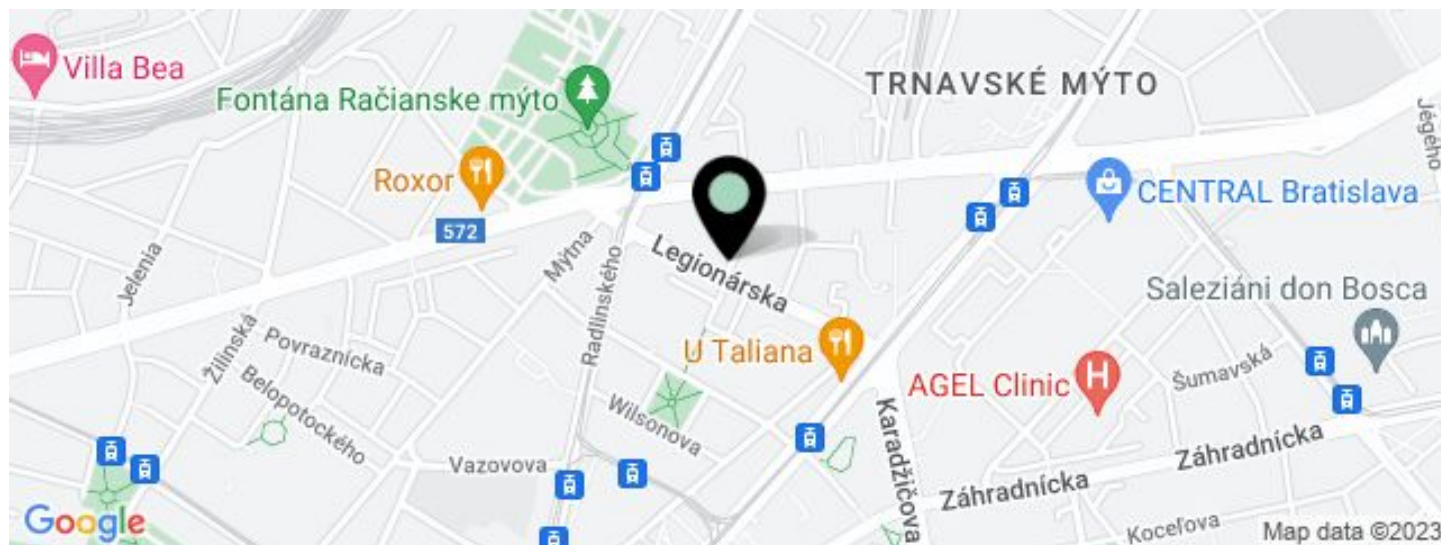


Office building

€ 20.00 - 24.00 / m² | CZK 500 - 600 / m²

575 m², Bratislava I, Staré Mesto, Legionárska



**Office building****€ 20.00 - 24.00 / m² | CZK 500 - 600 / m²**575 m², Bratislava I, Staré Mesto, Legionárska

UNIT	AVAILABLE AREA	SERVICES	PARKING	MONTHLY RENT
Retail space, Ground floor	359 m ²	4 EUR monthly per m ²	EUR 130 / ps / month	€ 20 - 24 / m ²



Office building

€ 20.00 - 24.00 / m² | CZK 500 - 600 / m²

575 m², Bratislava I, Staré Mesto, Legionárska

Service price	4 EUR monthly per m ²
Total building area	956 m ²
Tenant consumption	—
Parking	130 EUR
Parking service charges	—
Parking ratio	—
Certification	—
PENB	A
Reference number	34750

Modern polyfunctional building in the city center offering retail space for lease. It boasts a convenient location, excellent visibility, and the shop windows face the busy intersections of Legionárska-Karadžičova-Krížna streets. The complex complies with international standards and offers a high standard in all respects, thanks to which it received LEED GOLD certification.

The retail premises situated on the ground floor with a wheelchair accessible entrance offer flexible space layouts according to the tenant's requirements. The attractive location in Old Town on the border of the New Town district offers a wide range of services on site or in the vicinity, as well as civic amenities at your fingertips (shops, cafes, restaurants, public institutions, banks, hotel, medical facilities). A quiet courtyard is part of the complex.

Location:

The polyfunctional building is located near the major transport routes of the capital city, close to the popular CENTRAL shopping center. Excellent transport accessibility (public transport, car) and parking spaces available in the underground garage of the neighboring residential building.

Features and services:

Integrated heating, air-conditioning, and ventilation system. 24/7/365 building security service. Security camera system. Electronic fire alarm.

Rent and fees are listed without VAT. Tenant pays no commission.



	Nišovica A.1.17.3 - PREENAĽATE	140,000 m ²
	Nišovica A.1.17.7 - VOJNÉ	76,727 m ²
	Nišovica A.1.17.4 - VOJNÉ	95,037 m ²
	Nišovica A.1.17.2 - VOJNÉ	95,002 m ²
	Nišovica A.1.17.1 - VOJNÉ	37,470 m ²
	Nišovica A.1.17.6 - VOJNÉ	55,485 m ²
	Nišovica A.1.17.5 - PREENAĽATE	86,914 m ²
	Nišovica A.1.02.1 - PREENAĽATE	61,020 m ²
	Nišovica A.1.02.2 - VOJNÉ	107,657 m ²
	Nišovica A.1.02.3 - VOJNÉ	107,715 m ²
	Nišovica A.1.02.4 - PREENAĽATE	93,154 m ²
	PREENAĽATE PRIESTORY	341,118 m ²
	VOJNÉ PRIESTORY	575,093 m ²



1 NP
BOMA measurement standards