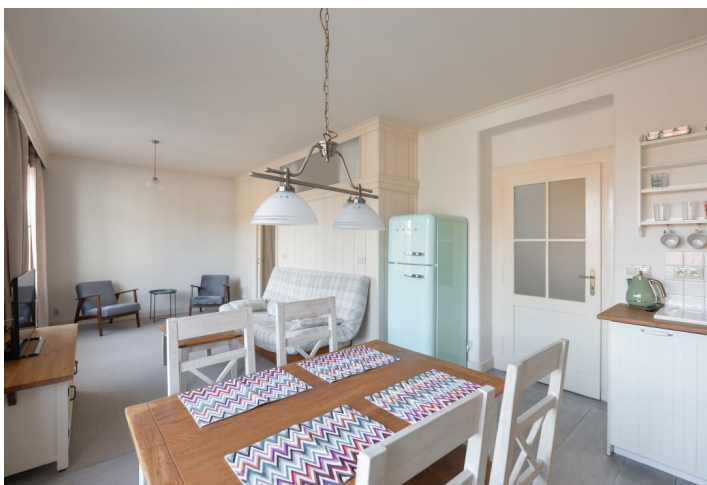


## Apartment One-bedroom (2+kk)

Rented

57 m<sup>2</sup>, Prague 1, Malá Strana, Hellichova



## Apartment One-bedroom (2+kk)

Rented

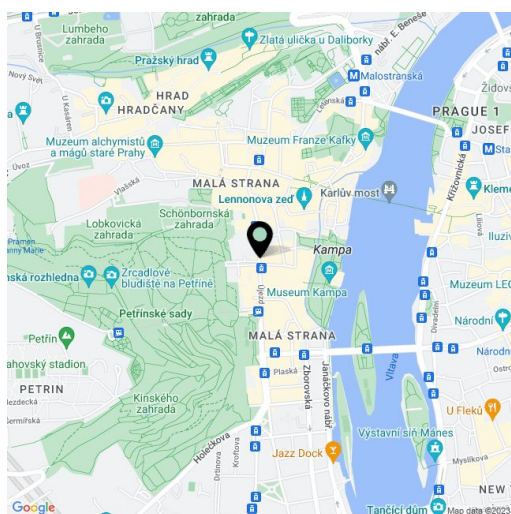
57 m<sup>2</sup>, Prague 1, Malá Strana, Hellichova

Total area	57 m <sup>2</sup>
Parking	-
Cellar	Yes
PENB	G
Reference number	34748
Available from	Immediately

Boasting beautiful views of the Prague Castle, this is a fully refurbished, fully furnished 1-bedroom flat on the fourth floor of a well kept residential building with preserved original features and no lift. Located right under the Petřín Hill Park, in the picturesque Malá Strana neighborhood, in close vicinity of the Vltava embankment and Kampa Park, with the most attractive sites of the old Prague just a few steps away. Within easy reach of the essential amenities, with many quality restaurants, bistros and cafes. A tram stop is close by and it is two short stops to Malostranská metro station (line A).

The apartment includes a living room with a dining area, a fully fitted open plan kitchen and beautiful views, a bedroom with a walk-in closet, a shower room with a toilet, and an entrance hall.

**Hardwood floors**, carpet in the bedroom, tiles, large windows, sofa, dishwasher, kitchenware, bed linen, TV, **cellar**. Deposit for service charges, utilities and the Internet: CZK 2600/month.



\* Area of the unit according to the Civil Code. The area consists of the sum total area of the entire unit bounded by perimeter walls.