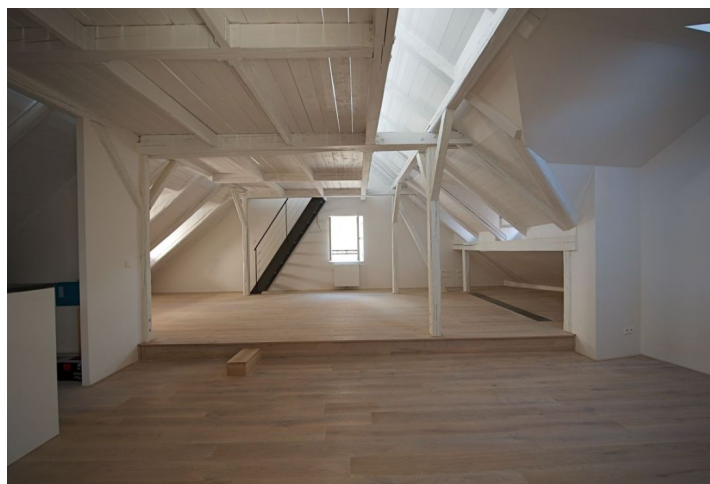


## Apartment Two-bedroom (3+kk)

Rented

140 m<sup>2</sup>, Prague 1, Malá Strana, U lužického semináře



# Apartment Two-bedroom (3+kk)

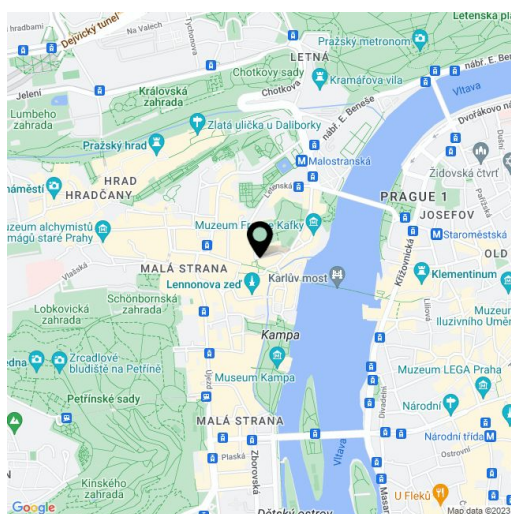
**Rented**140 m<sup>2</sup>, Prague 1, Malá Strana, U lužického semináře

Total area	140 m <sup>2</sup>
Parking	Parking can be arranged.
Cellar	-
PENB	G
Reference number	3451
Available from	Immediately

Perfectly located just 50 meters from Charles Bridge is this renovated 2nd floor 2-bedroom 2-bathroom apartment with a gallery in a completely reconstructed historic building in the heart of Malá Strana.

It has a large living room with fully fitted open plan kitchen and stairway leading to a gallery suitable for a study or storage, and 2 en-suite bathrooms.

Quality finishes and materials, oak floors, air-conditioning, security entry door, alarm, video intercom, satellite and Internet connections. Furniture included sofa, TV and TV stand, double bed, wardrobes, misc small tables, etc. Metro and trams minutes away, a short walk to the Prague Castle or, in the opposite direction, to Old Town Square. The rental price is listed exclusive of VAT. Common building charges approx. CZK 3000/month. Gas and electricity will be registered in the tenant's name.



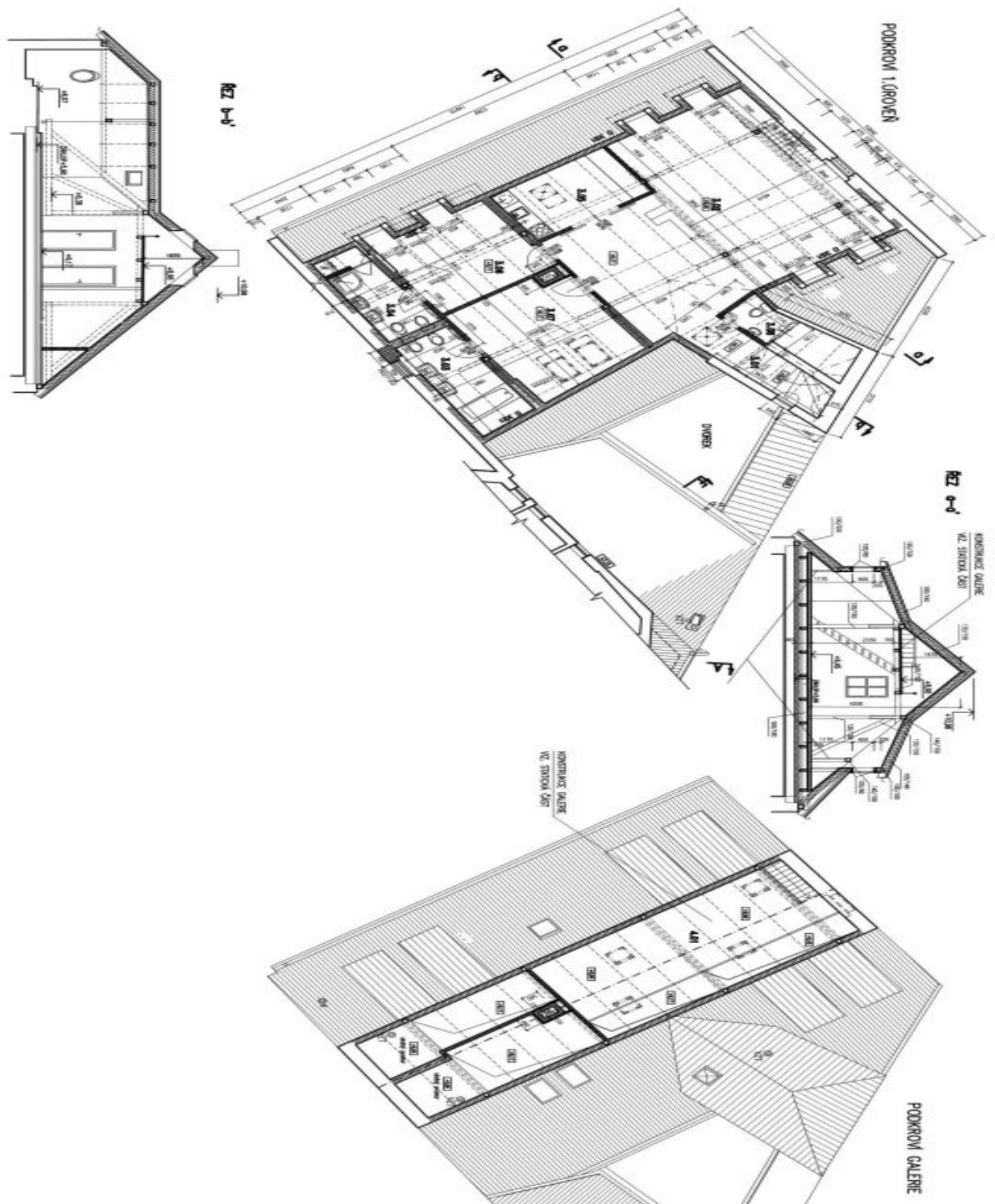
\* Area of the unit according to the Civil Code. The area consists of the sum total area of the entire unit bounded by perimeter walls.



## Apartment Two-bedroom (3+kk)

Rented

140 m<sup>2</sup>, Prague 1, Malá Strana, U lužického semináře



## Apartment Two-bedroom (3+kk)

Rented

140 m<sup>2</sup>, Prague 1, Malá Strana, U lužického semináře

