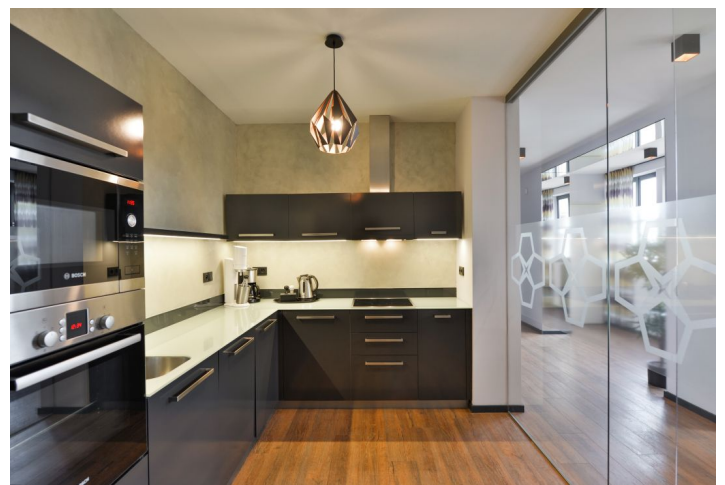


Apartment Four-bedroom (5+1)

Rented

145 m², Prague 1, Nové Město, Jindřišská



Apartment Four-bedroom (5+1)

Rented

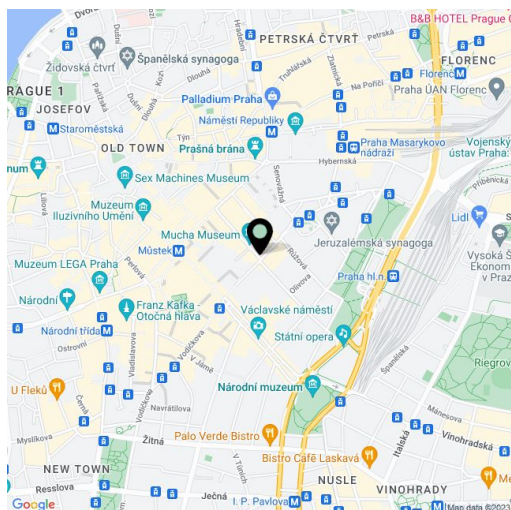
145 m², Prague 1, Nové Město, Jindřišská

Total area	145 m ²
Parking	-
Cellar	-
Service price	Service charges and water bills: CZK 1,000/person/month. Gas and electricity - transfer to the tenant.
PENB	G
Reference number	34483
Available from	Immediately

This spacious, fully furnished 4-bedroom 3-bathroom apartment is on the 5th floor of a well kept historic building with a lift. Located in the very center of Prague, just a few minutes from the Prague Main Railway Station, Masaryk Railway Station and Wenceslas Square with all three Prague metro lines and full amenities in the vicinity. Great location for people who enjoy city life and the convenience of being able to walk to just about anywhere. There is a tram stop just steps from the building, and within walking distance there are numerous historic sights, cultural venues, quality services, shops, cafes, restaurants, and more.

The apartment features an open entrance hall with a breakfast bar, a fully fitted kitchen separated by a glass wall, a comfortable living room with a dining area, 4 bedrooms, 3 bathrooms (two walk-in showers / bathtub, toilet), and utility area.

High standard equipment, wooden floors, tiles, security entry door, built-in wardrobes in one bedroom and the hall, master switch, gas boiler, washer, dryer, induction cooktop, dishwasher, microwave oven, TV, alarm, satellite reception, garden furniture.



* Size of the unit according to the Housing Act.
The area consists of the sum total of the internal area of every room.