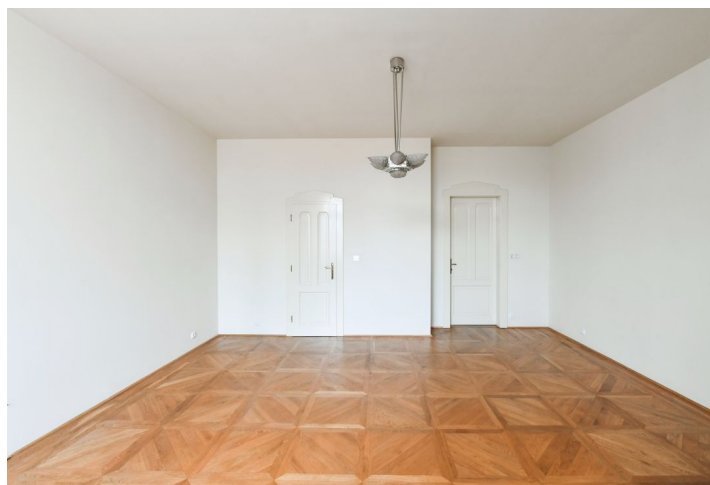


Apartment One-bedroom (2+kk)

Sold

72 m², Prague 1, Josefov, Elišky Krásnohorské



Apartment One-bedroom (2+kk)

Sold72 m², Prague 1, Josefov, Elišky Krásnohorské

Total area	72 m ²
Parking	-
Cellar	Yes
PENB	G
Reference number	34301

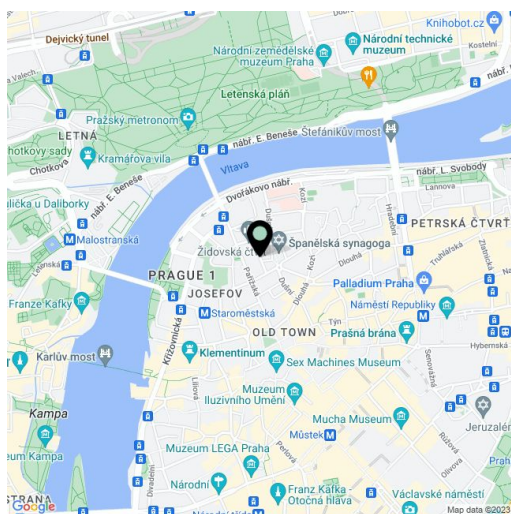
This apartment overlooking the Church of the Holy Spirit is located on the 6th floor of an Art Nouveau apartment building in a lucrative part of Prague, on a side street parallel to magnificent Pařížská Avenue.

The layout consists of a 28 sq.m. room, a kitchen, a large hall, a foyer, a bathroom, a separate toilet, and a pantry.

The facilities include parquet floors, casement windows, security equipment, and a videophone. It is possible to rent a **garage parking space** in the hotel located 200 m from the building.

The attractive location of Prague 1, **Josefov**, full of mysterious streets, offers a wide range of restaurants, cafes and clubs, Czech and international designer boutiques, a large number of monuments, and a rich cultural and spiritual life. **Two churches (Holy Spirit and U Salvátora)** and several synagogues are in the immediate vicinity of the building. Everything you need is located within walking distance or a short ride by public transport. A tram stop is only a few steps away and the Staroměstská metro station (line A) is within walking distance.

Interior 71.7 sq.m, cellar.



* Area of the unit according to the Civil Code. The area consists of the sum total area of the entire unit bounded by perimeter walls.

Apartment One-bedroom (2+kk)

Sold

72 m², Prague 1, Josefov, Elišky Krásnohorské

