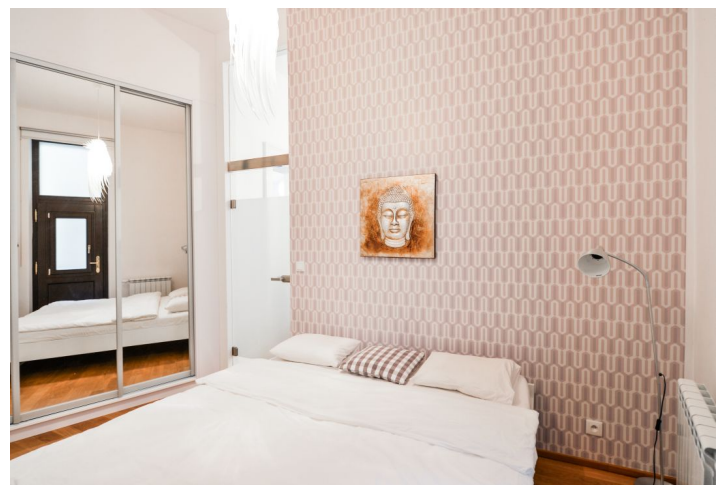
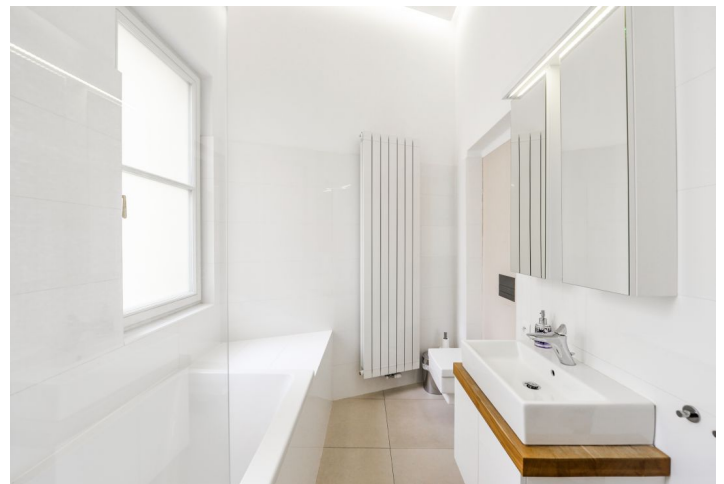


Apartment One-bedroom (2+kk)

Rented

82 m², Prague 1, Nové Město, Na Poříčí



Apartment One-bedroom (2+kk)

Rented

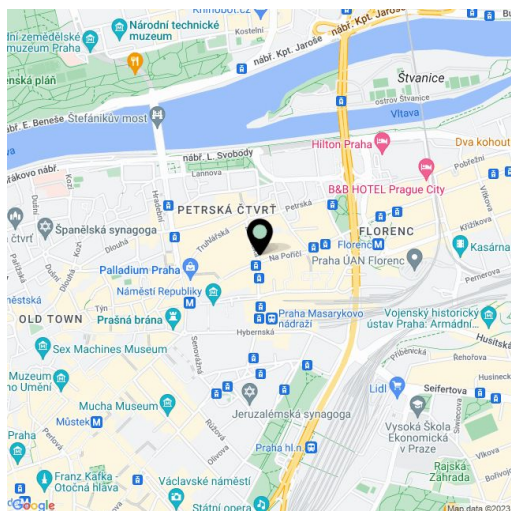
82 m², Prague 1, Nové Město, Na Poříčí

Total area	90 m ²
Floor area*	82 m ²
Loggia	8 m ²
Parking	-
Cellar	Yes
Service price	Deposit for service charges, Internet, and water CZK 3,000/month. Gas and electricity - transferred to the tenant.
PENB	G
Reference number	34133
Available from	Immediately

This fully renovated, fully furnished apartment with an enclosed balcony is situated on the 5th floor of a fully refurbished residential building with an elevator and preserved original details. Beautifully located just moments from the Florenc metro station and multiple tram links, around the corner from the Florenc bus terminal and Hilton Hotel, and within walking distance from the Palladium and Kotva shopping malls.

The apartment consists of a spacious living room with a dining area and fully fitted open plan kitchen, a bedroom with a built-in wardrobe, a bathroom including a bathtub and toilet, and an entrance hall with access to the enclosed balcony. The apartment faces a quiet courtyard.

Hardwood floors, tiles, large windows, gas boiler, underfloor heating in the bathroom, washing machine, dryer, dishwasher, microwave oven, sofa bed, TV, cellar. Available from October 2024, maybe earlier upon agreement.



* Area of the unit according to the Civil Code. The area consists of the sum total area of the entire unit bounded by perimeter walls.