

House Five-bedroom (6+kk)

Rented

200 m², Prague 6, Střešovice, Lomená



House Five-bedroom (6+kk)

Rented

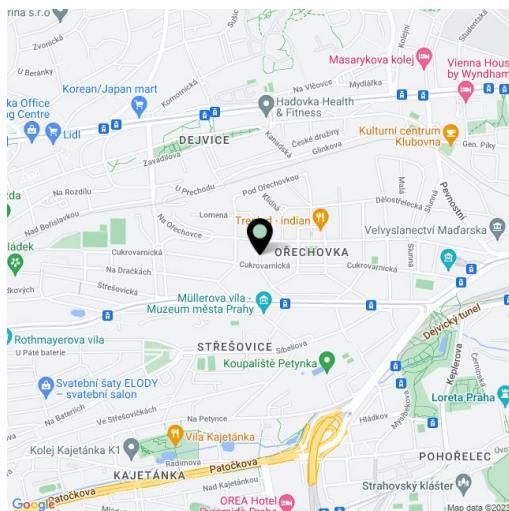
200 m², Prague 6, Střešovice, Lomená

Plot	316 m ²
Foot print	87 m ²
Garden	229 m ²
Parking	Parking on the plot.
Cellar	Yes
Service price	Utilities in the approximate amount of CZK 12,000/mo. are billed separately.
PENB	G
Reference number	34045
Available from	Immediately

Townhouse from 1920-1922 by the Czech architects Jaroslav Vondrák and Jan Šenkýř, inspired by English garden city style architecture. Boasting a prestigious location, this completely refurbished, unfurnished home with a garden is situated in the heart of the exclusive Ořechovka neighborhood with mature trees, parks, and distinguished villas. A location with quick access to the city center, Prague Castle, international schools, and the airport, within easy reach of the Dejvická and Hradčanská metro stations. A tram stop is located a few min. walk from the house.

The ground floor features a living room, a **glass extension** including a fully fitted kitchen and dining area plus access to the **terrace**, a study (or a guest bedroom), a toilet, and an entrance hall. The first floor offers two bedrooms and a full bathroom, and the second, attic floor has two **air-conditioned** bedrooms, plus a shower room with a toilet. There is a basement floor with storage space and a utility area.

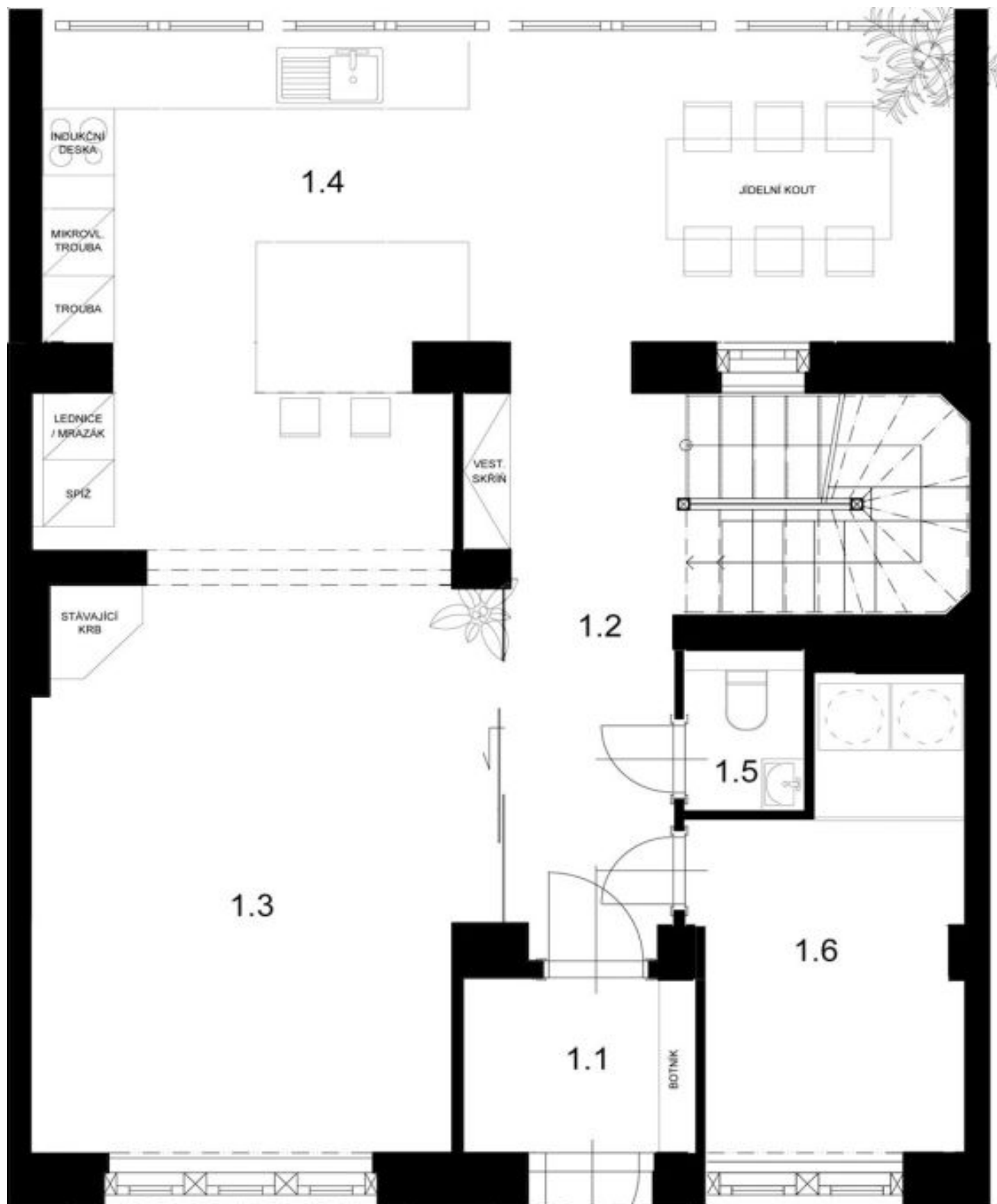
Preserved original features, **oak parquet floors**, tiles, wooden staircases, gas boiler, built-in wardrobes and storage, dishwasher, microwave oven, barbecue grill, alarm. **Parking on the plot.**



House Five-bedroom (6+kk)

Rented

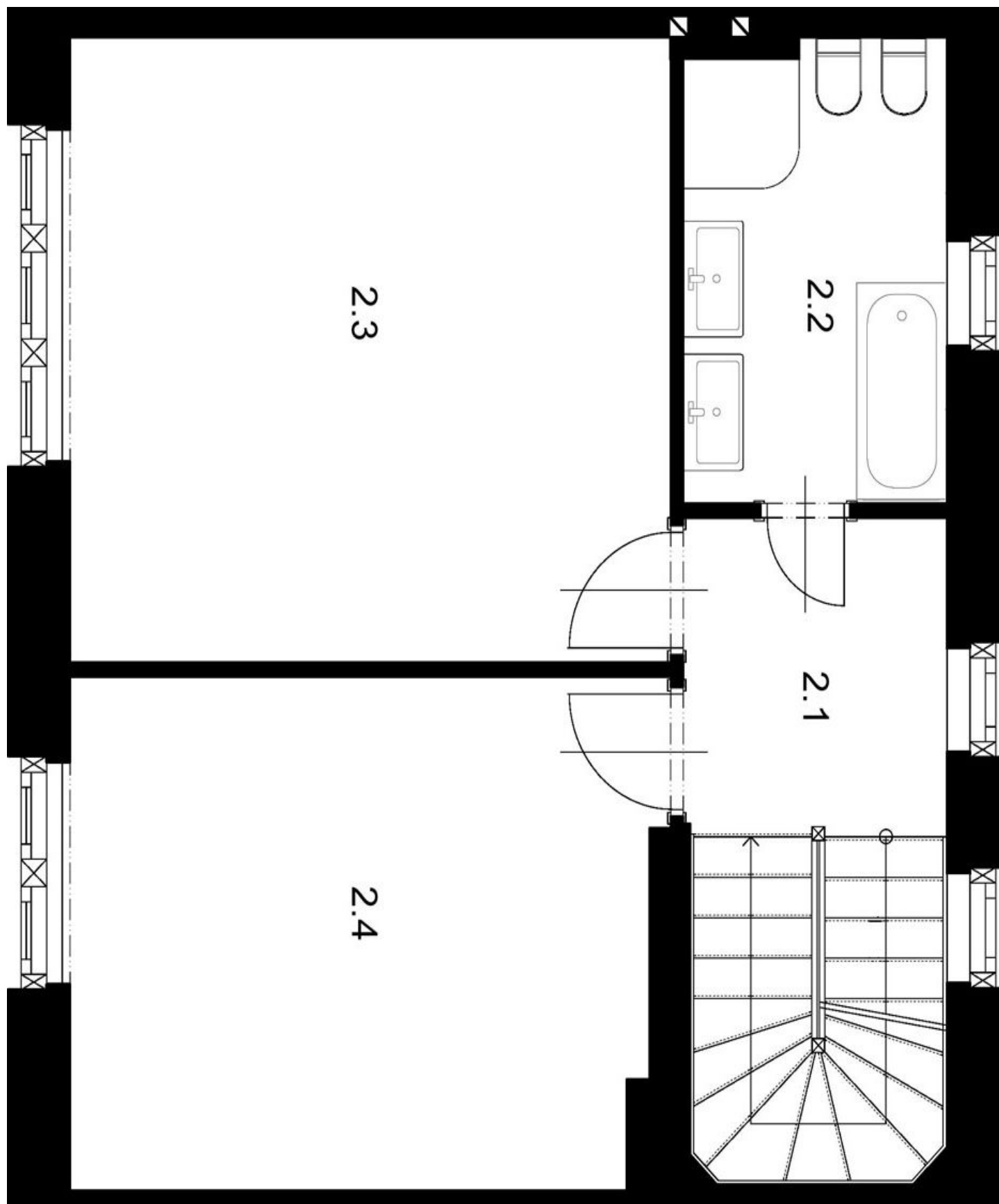
200 m², Prague 6, Střešovice, Lomená



House Five-bedroom (6+kk)

Rented

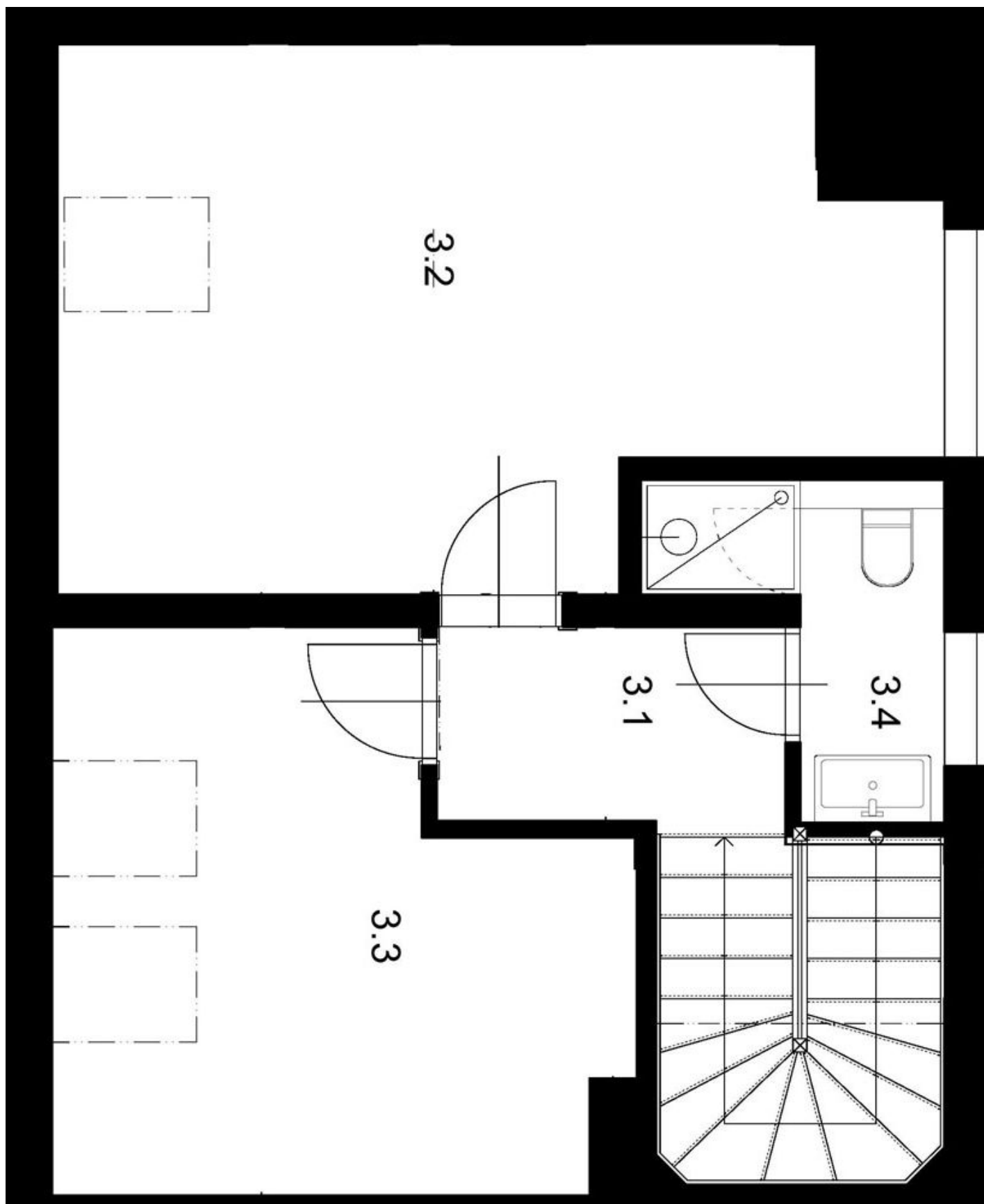
200 m², Prague 6, Střešovice, Lomená



House Five-bedroom (6+kk)

Rented

200 m², Prague 6, Střešovice, Lomená



House Five-bedroom (6+kk)

Rented

200 m², Prague 6, Střešovice, Lomená

