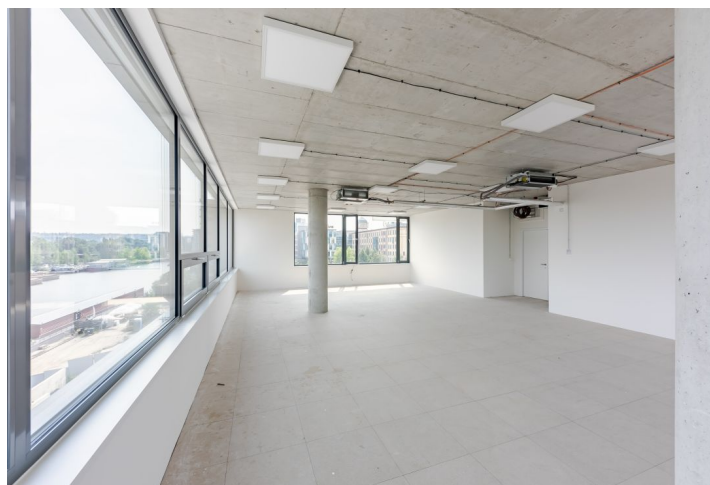
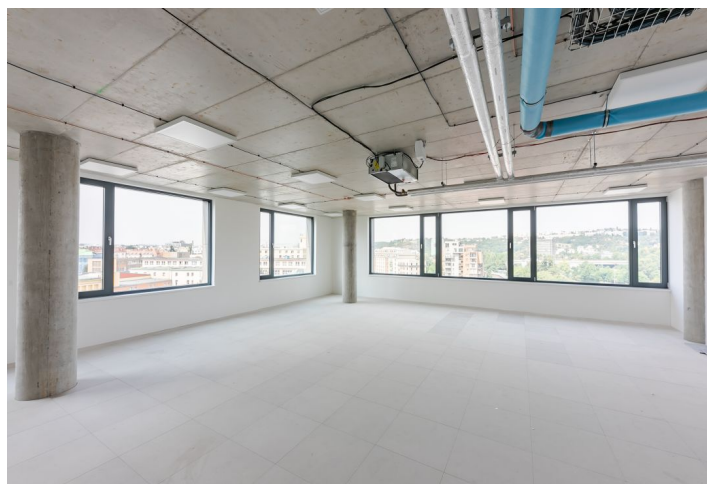


Office building

Rented

Prague 7, Holešovice, Jankovcova



Office building

Rented

Prague 7, Holešovice, Jankovcova

Service price	100 CZK monthly per m ²
Total building area	2 890 m ²
Tenant consumption	—
Parking	2 000 CZK
Parking service charges	—
Parking ratio	—
Certification	—
PENB	B
Reference number	34032

Modern office space for lease in a new office building built according to the plans of the ADNS architekti studio. The building has an outdoor parking.

Location:

Good access by public transport—close to the Nádraží Holešovice and Vltavská (line C) metro stations and the Dělnická, Maniny, and Ortenovo náměstí tram stops. Good connection to main arterial routes, including the D1 and D8 (to Berlin) highways.

Features and services:

Network distribution
Double floors
Openable windows
Cooling
Central reception
Access via magnetic cards
Fan coils
Exterior blinds

Rental and service charges are listed without VAT. Lessee pays no commission.

