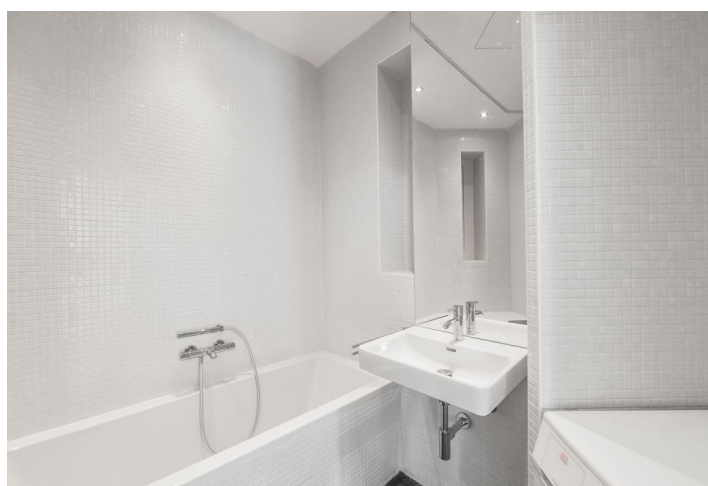


Apartment One-bedroom (2+1)

Rented

60 m², Prague 2, Vinohrady, Chodská



Apartment One-bedroom (2+1)

Rented

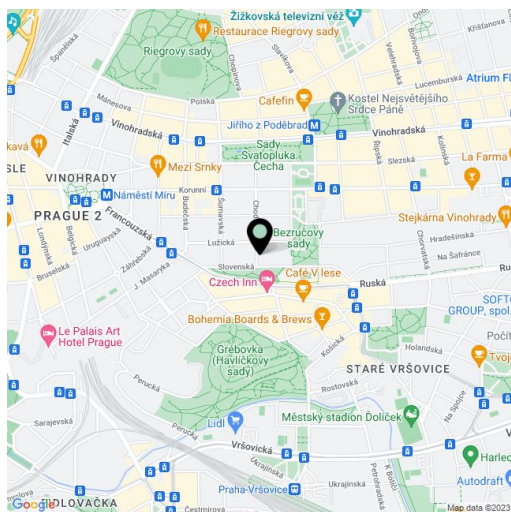
60 m², Prague 2, Vinohrady, Chodská

Total area	60 m ²
Parking	-
Cellar	-
Service price	Services and water: CZK 1,800/month. Gas and electricity - transferred to the tenant.
PENB	G
Reference number	34009
Available from	Immediately

This completely refurbished apartment designed by a renowned architectural studio is on the upper ground floor of a well-maintained renovated traditional residential building by the eminent Czech architect Emil Králíček. Set in the much sought-after neighborhood of Vinohrady right next to **Bezručovy Sady Park**, within easy reach of full amenities and with quick access to the city center. Located within walking distance of the **Náměstí Míru** and **Jiřího z Poděbrad** metro stations, and the lovely **Havlíčkovy Sady** and **Sady Bratří Čapků** parks.

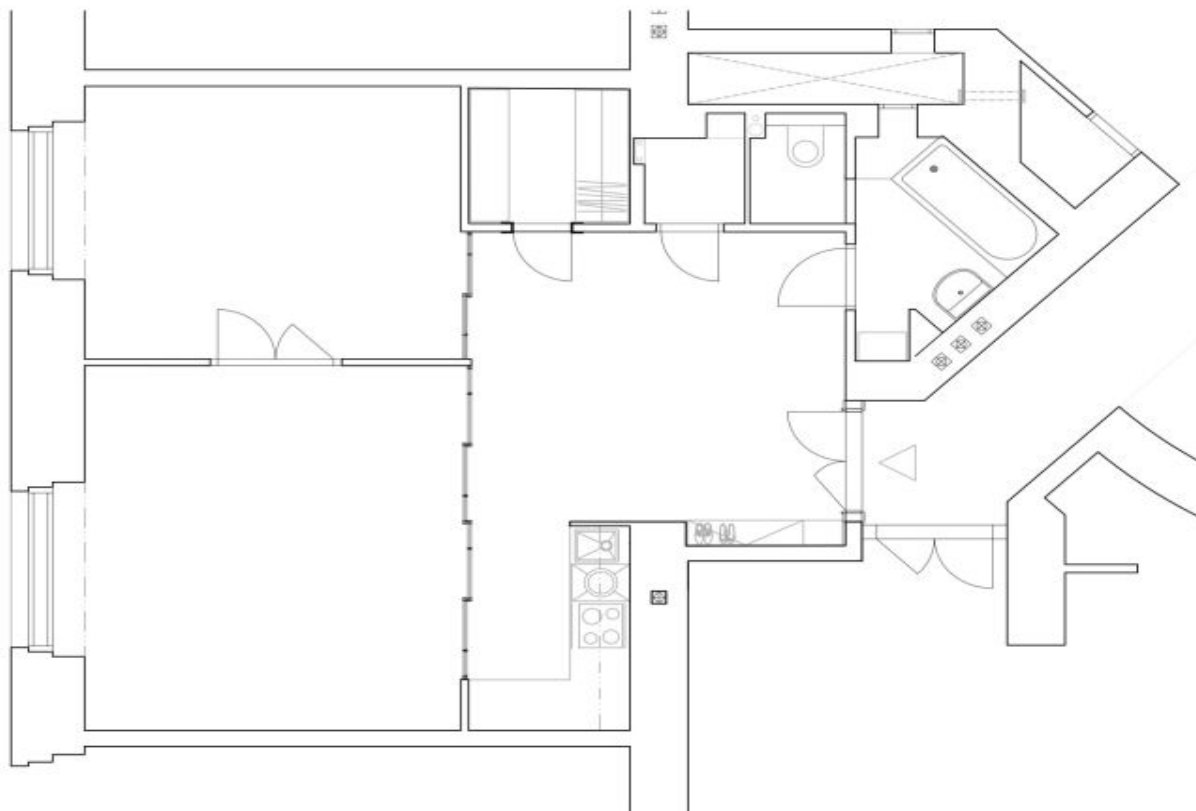
The airy interior features a living room and one bedroom both with **park views**, a spacious hall with a fully fitted open plan kitchen, a bathroom including a bathtub, a toilet, and a bidet shower, a **walk-in closet**, and a closet.

High ceilings, large windows, **hardwood parquet floors**, security entry door, gas boiler, washing machine, quality kitchen appliances (dishwasher, induction cooktop, and a combination oven), alarm.



* Area of the unit according to the Civil Code. The area consists of the sum total area of the entire unit bounded by perimeter walls.

Apartment One-bedroom (2+1)

Rented60 m², Prague 2, Vinohrady, Chodská

Legenda místností		
Označení výřezu	Účel místnosti	Plocha [m ²]
1.01	Jídelní hala s kuchyní	18,90
1.03	Obývací pokoj	18,05
1.04	Ložnice	13,52
1.05	Šatna	2,80
1.06	komora	1,15
1.07	Toaleta	1,28
1.08	Koupelna	3,97
		59,67