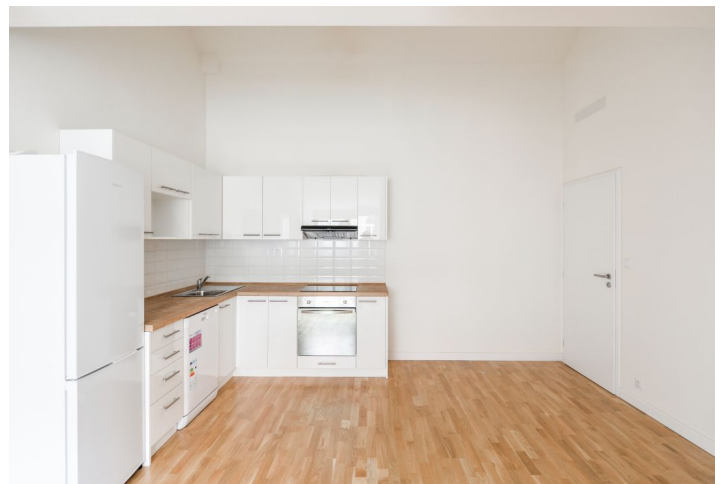


## Apartment Two-bedroom (3+kk)

Rented

88 m<sup>2</sup>, Prague 3, Žižkov, Řehořova



# Apartment Two-bedroom (3+kk)

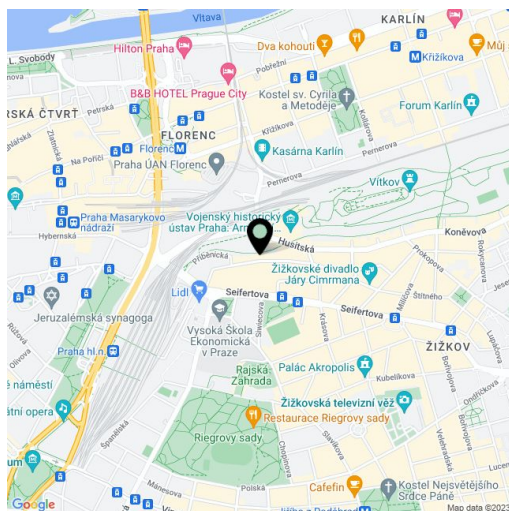
**Rented**88 m<sup>2</sup>, Prague 3, Žižkov, Řehořova

Total area	88 m <sup>2</sup>
Parking	-
Cellar	-
PENB	G
Reference number	33629
Available from	Immediately

New 2-bedroom attic apartment on the 4th top floor of a completely newly refurbished residential building from the beginning of the 20th century, with a new lift and preserved original details. Located on a quiet street in a sought after area on the border between Žižkov and Vinohrady, within walking distance of the city center, a few min. walk to bus and tram stops, one short stop to the Hlavní nádraží metro station. The location offers complete amenities including sports and relaxation opportunities in the nearby parks the Vítkov Hill, Riegrovy sady and Parukářka, as well as a popular bike path.

The apartment consists of a living room with a fully fitted open plan kitchen and a dining area, two bedrooms, a bathroom including a bathtub, a walk-in shower and a toilet, a storage room, and an entrance hall.

**Wooden floors**, tiles, central gas heating, dishwasher, induction cooktop. Monthly deposit for service charges, water and heating: CZK 5262/month. Electricity is billed separately.



\* Area of the unit according to the Civil Code. The area consists of the sum total area of the entire unit bounded by perimeter walls.

## Apartment Two-bedroom (3+kk)

88 m<sup>2</sup>, Prague 3, Žižkov, Řehořova

Rented





## Apartment Two-bedroom (3+kk)

Rented

88 m<sup>2</sup>, Prague 3, Žižkov, Řehořova

Byt č.24

5.podlaží 88,00 m<sup>2</sup>

1	Chodba	10,36
2	Obývací prostor+kk	45,61
3	Koupelna	5,71
4	Pokoj	18,94
5	Komora	1,83



umístění bytu na patře

## Apartment Two-bedroom (3+kk)

88 m<sup>2</sup>, Prague 3, Žižkov, Řehořova

Rented

