

## Apartment Three-bedroom (4+kk)

Rented

143 m<sup>2</sup>, Prague 10, Vršovice, Ruská



## Apartment Three-bedroom (4+kk)

Rented

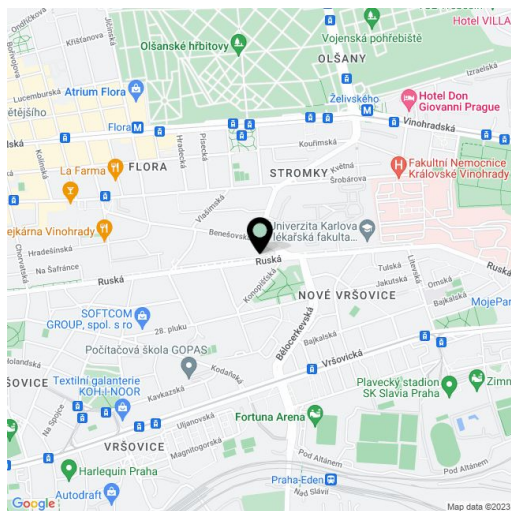
143 m<sup>2</sup>, Prague 10, Vršovice, Ruská

Total area	155 m <sup>2</sup>
Floor area*	143 m <sup>2</sup>
Terrace	12 m <sup>2</sup>
Parking	-
Cellar	Yes
PENB	G
Reference number	33589
Available from	Immediately

This unfurnished, air-conditioned 3-bedroom 2-bathroom split-level attic apartment with a south-facing terrace is on the 6th floor of a completely renovated apartment building with an elevator and a shared courtyard garden. Located in a quiet residential area on the border of Vinohrady and Vršovice, in the immediate vicinity of a prestigious neighborhood with historic villas, with quick connections to the city center, just a few min. ride to the Náměstí Míru metro station with full amenities in the area.

The lower level of the apartment offers a living room with a double height ceiling and a fully integrated Poggenpohl kitchen, 2 bedrooms, a walk-in closet, a bathroom incl. a bathtub with a shower screen, a separate toilet with a bidet shower, and a utility room. The upper floor features a master bedroom with access to the terrace, a walk-in closet, a bathroom with a walk-in shower, and a separate toilet with a bidet shower.

Far-reaching views, air-conditioning in the bedrooms, wooden floors, designer lighting fixtures, electrically operated skylights, insect nets, awning, external blinds, custom-made furniture, built-in wardrobes, built-in audio system in the living room and master bedroom, gas boiler, washer, dryer, dishwasher, microwave oven, wine fridge, cellar, pram/bike storage room in the building. Service charges and water bills approx. CZK 2,000/month. Gas and electricity are billed separately. Available from July 2022. The apartment is unfurnished.



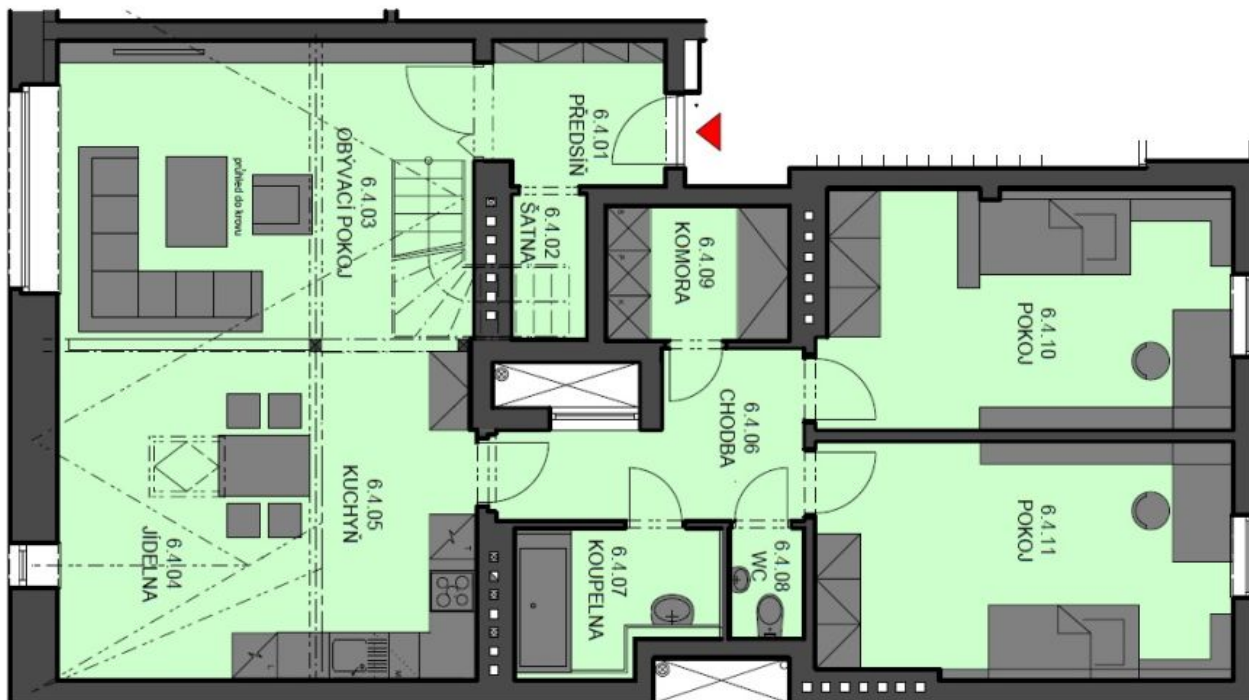
\* Area of the unit according to the Civil Code. The area consists of the sum total area of the entire unit bounded by perimeter walls.



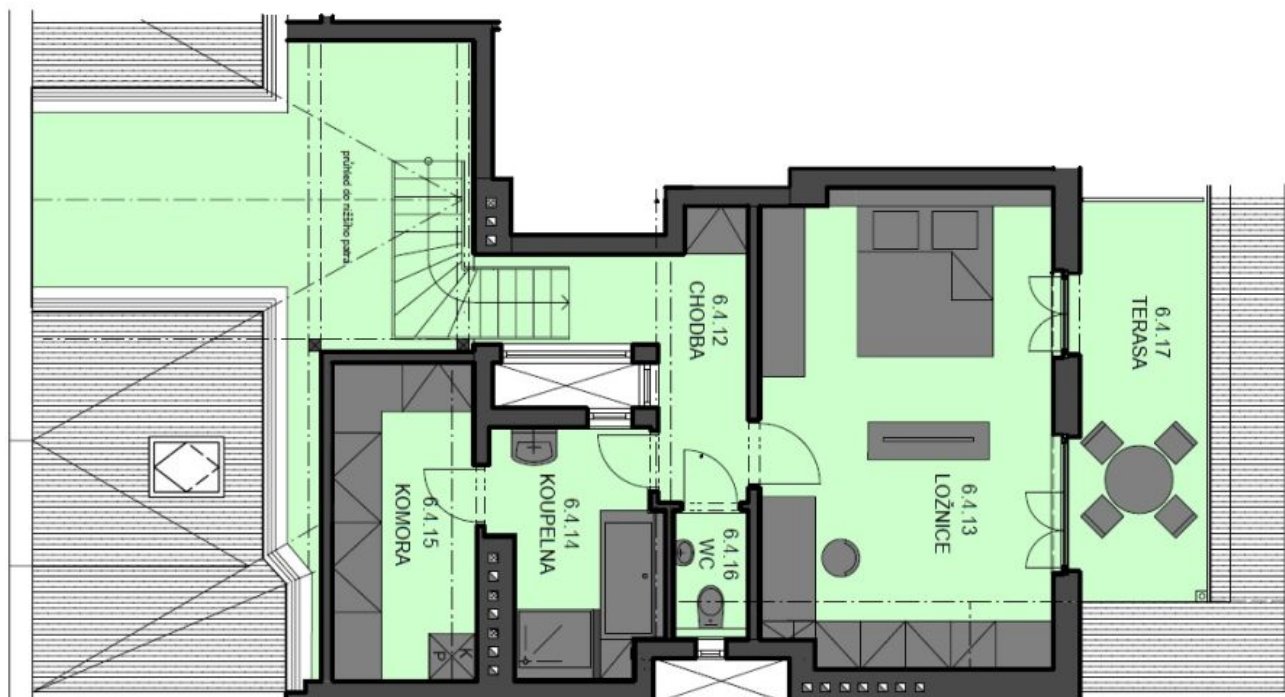
# Apartment Three-bedroom (4+kk)

Rented

143 m<sup>2</sup>, Prague 10, Vršovice, Ruská



PŮDORYS 6. NP



PŮDORYS 7. NP