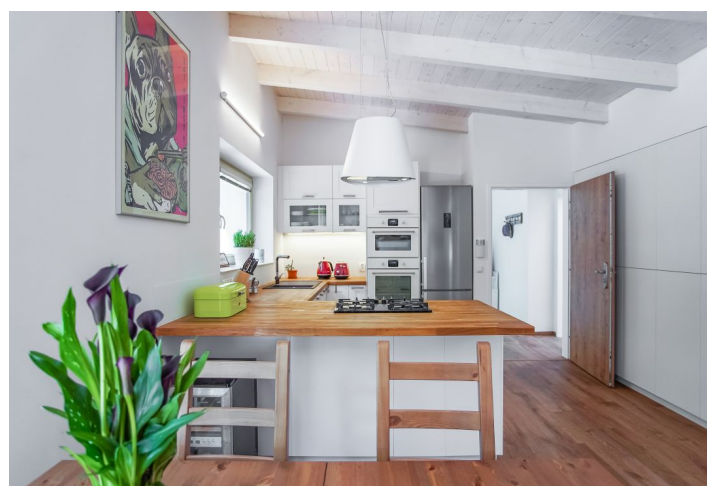
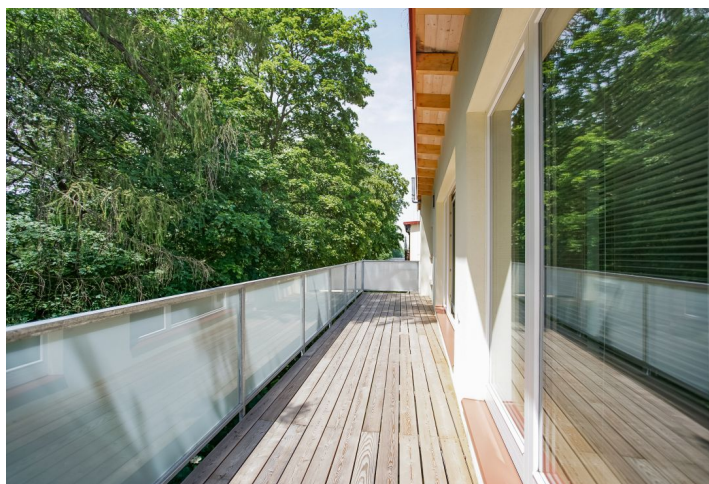


## Apartment Three-bedroom (4+kk)

Rented

139 m<sup>2</sup>, Prague 6, Liboc, Na Vypichu



## Apartment Three-bedroom (4+kk)

Rented

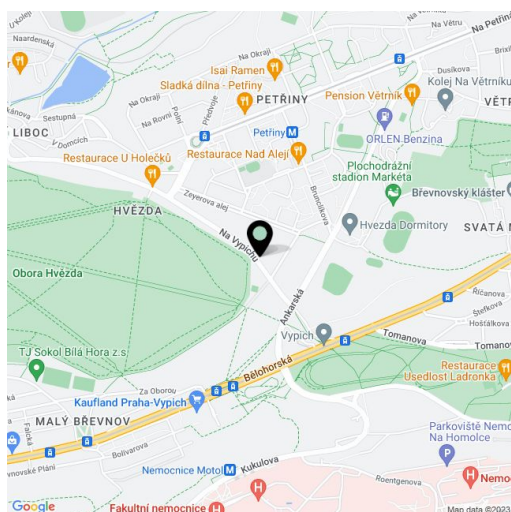
139 m<sup>2</sup>, Prague 6, Liboc, Na Vypichu

Total area	164 m <sup>2</sup>
Floor area*	139 m <sup>2</sup>
Terrace	25 m <sup>2</sup>
Garden	300 m <sup>2</sup>
Parking	Double garage and two spaces in front of the garage.
Garage	Yes
Cellar	-
PENB	B
Reference number	33402
Available from	Immediately

Boasting a 25 m<sup>2</sup> terrace and wonderful direct views of the Hvězda Park, this is a high standard 3-bedroom 2-bathroom apartment with wooden ceilings, on the second floor in a free standing house with parking and a garden. Located in a quiet residential neighborhood on the Břevnov and Petřiny divide, in an immediate vicinity of the Hvězda and Ladronka Parks, within walking distance of the Petřiny metro station and full amenities. Tram and bus stops are just a few min. walk from the house.

The airy interior features a large living room with a dining area and a fully fitted open plan kitchen (60 m<sup>2</sup>), a master bedroom with built-in wardrobes and an en-suite bathroom (bathtub, toilet), a second bedroom, a family bathroom (bathtub, walk-in shower, toilet), a utility room, and an open entrance hall. There is also a separate adjacent office. The **terrace** is accessible from the living room and the master bedroom.

Quality equipment and finishes, vinyl floors with underfloor heating, security entry door, gas boiler, very good insulation, triple glazed windows, projection screen, blinds, washing machine, dishwasher, microwave oven, wine fridge, video entry phone, alarm. No lift. **Double garage and two parking spaces** in front of the garage are included. Service charges and utilities are billed separately.



\* Area of the unit according to the Civil Code. The area consists of the sum total area of the entire unit bounded by perimeter walls.