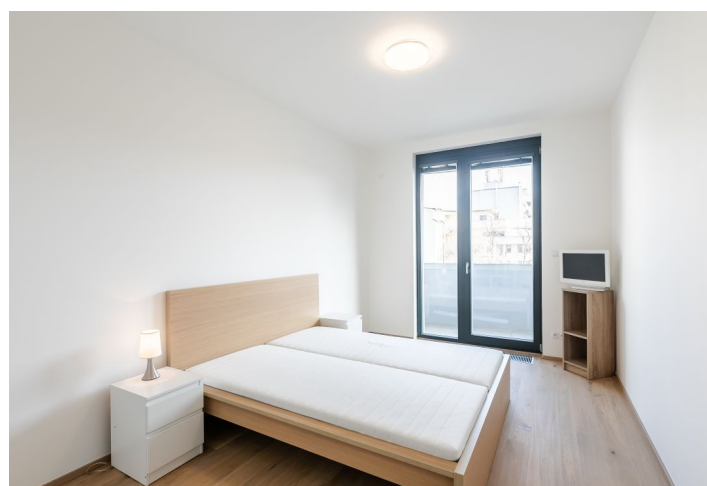


## Apartment One-bedroom (2+kk)

Rented

55 m<sup>2</sup>, Prague 7, Holešovice, Osadní



## Apartment One-bedroom (2+kk)

Rented

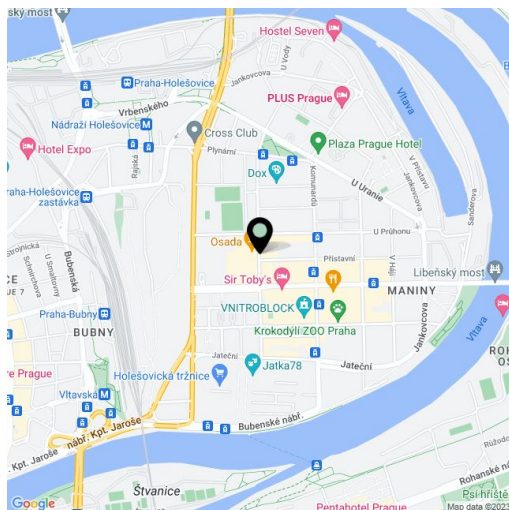
55 m<sup>2</sup>, Prague 7, Holešovice, Osadní

Total area	59 m <sup>2</sup>
Floor area*	55 m <sup>2</sup>
Terrace	4 m <sup>2</sup>
Parking	1 garage parking space included in the rent.
Garage	Yes
Cellar	Yes
PENB	B
Reference number	33353
Available from	Immediately

Furnished 1-bedroom apartment with a terrace on the third floor of the Vivus Osadní residential project with an elevator and underground parking, located in a rapidly developing part of Holešovice. The Nádraží Holešovice, Palmovka, and Vltavská metro stations are a few tram stops away, and the DOX Center for Contemporary Art and La Fabrika theater are close-by.

The apartment features a living room with a fully fitted open plan kitchen and access to the terrace, one bedroom, a bathroom with a bathtub, toilet, and bidet shower, and an entrance hall.

Wooden floors, tiles, security entry door, dishwasher, cellar, pram storage. Deposit for common building charges and water CZK 4,000/month. Electricity will be transferred to the tenant's name. Available from July 15th, 2022.



\* Area of the unit according to the Civil Code. The area consists of the sum total area of the entire unit bounded by perimeter walls.