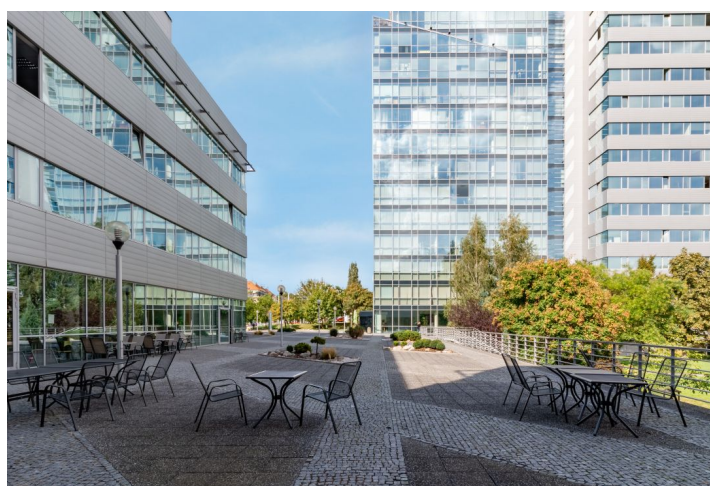
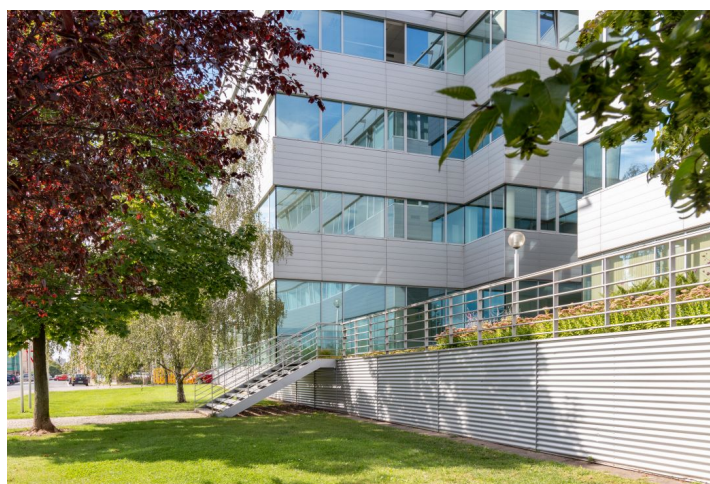
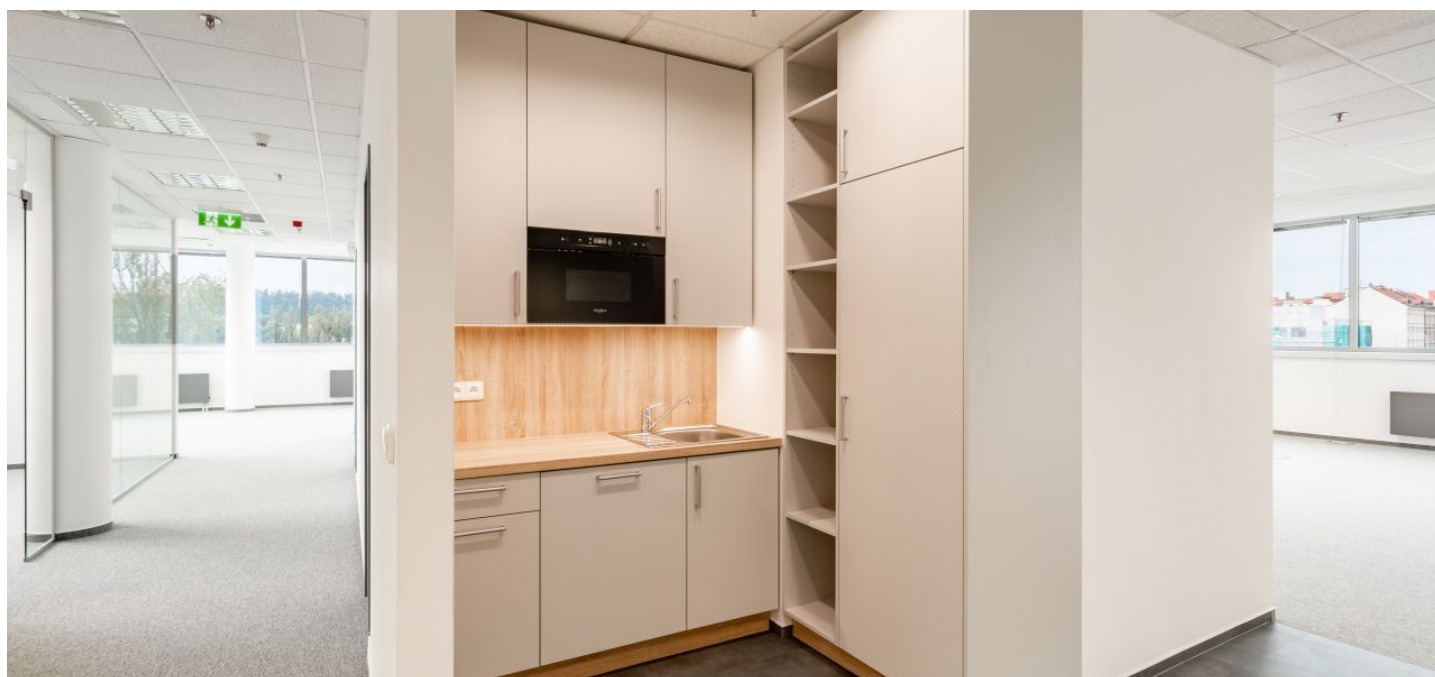


Office space

Rented

Prague 7, Holešovice, Jankovcova



Office space

Rented

Prague 7, Holešovice, Jankovcova

Service price	135 CZK monthly per m ²
Available area	702 m ²
Cellar	-
Parking	EUR 140 / pp / month
PENB	B
Reference number	33318

Office complex in Prague 7 offers office space for lease on the 2nd floor. The building, which has received international BREEAM certification at the Very Good level, consists of two towers - building A with 19 floors and the lower building B with 4 floors. The complex has a central reception, 24-hour security, underground parking and modern lifts. The complex also includes a restaurant and a café.

Location:

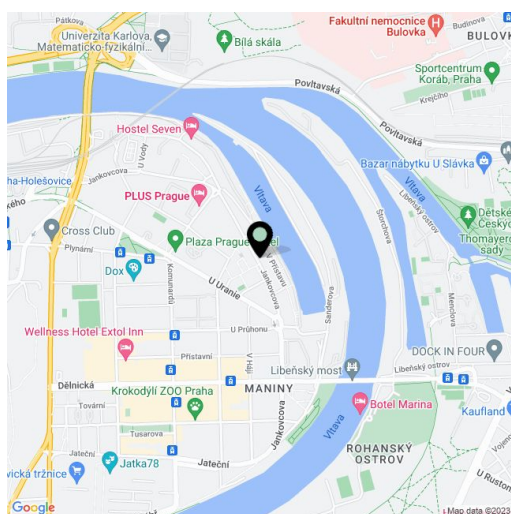
Great accessibility by public transport and by car - close to metro stations Vltavská (line C) and Palmovka (line B), and just a few minutes walk to tram stops Dělnická and Maniny.

Features and Services:

- Central reception
- 24-hour security service
- Air-conditioning
- CCTV
- Modern elevators
- Carpets and tiles on the floors
- Storage space
- Underground garage parking
- Restaurant and café

Available from July, 2025. Under offer.

Rental and service charges listed without VAT. Lessee pays no commission.



Office space

Rented

Prague 7, Holešovice, Jankovcova

