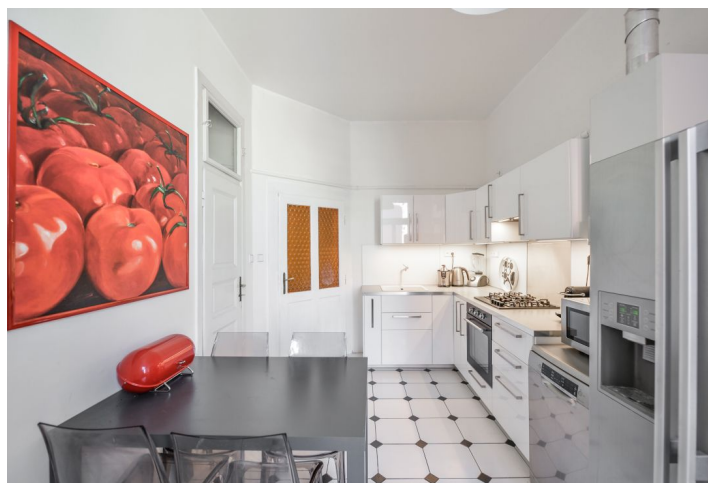


## Apartment Two-bedroom (3+1)

Rented

90 m<sup>2</sup>, Prague 5, Smíchov, Jindřicha Plachty



# Apartment Two-bedroom (3+1)

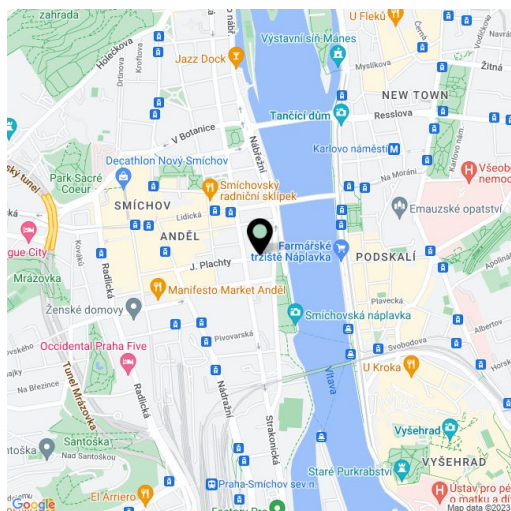
**Rented**90 m<sup>2</sup>, Prague 5, Smíchov, Jindřicha Plachty

Total area	90 m <sup>2</sup>
Parking	-
Cellar	-
PENB	D
Reference number	32971
Available from	Immediately

This furnished renovated 2-bedroom apartment is situated on the third floor of a well kept renovated residential building with a lift in a quiet street just minutes from the Vltava riverbank. Location with very quick access to the city center, a short walk from Nový Smíchov commercial and entertainment center and Anděl metro station, line B, with multiple tram and bus connections.

The apartment includes a living room, a walk-through master bedroom with built-in wardrobes, a second bedroom, a fully fitted kitchen with a pantry, an adjacent bathroom with a walk-in shower, a separate toilet, and an entrance hall with a built-in wardrobe.

Preserved original details, high ceilings, large windows, **solid wood parquet floors**, tiles, gas boiler, washing machine, dishwasher, microwave oven, TV, shared balcony on the mezzanine floor of the building. Deposit for common building charges CZK 1200/month. Gas and electricity will be transferred to the tenant.



\* Area of the unit according to the Civil Code. The area consists of the sum total area of the entire unit bounded by perimeter walls.