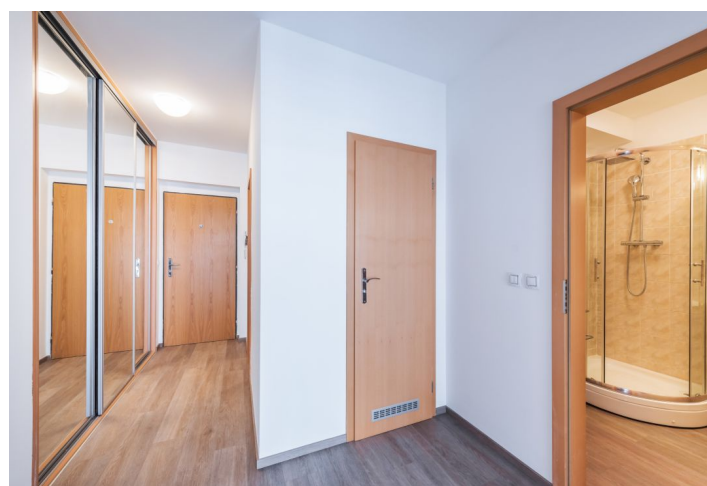
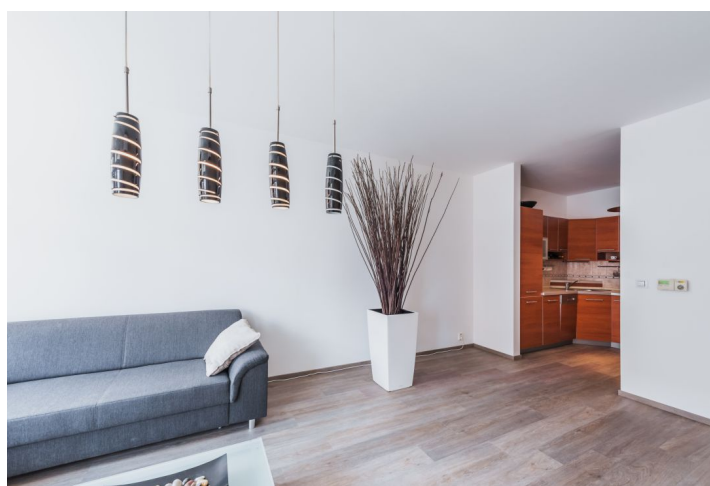
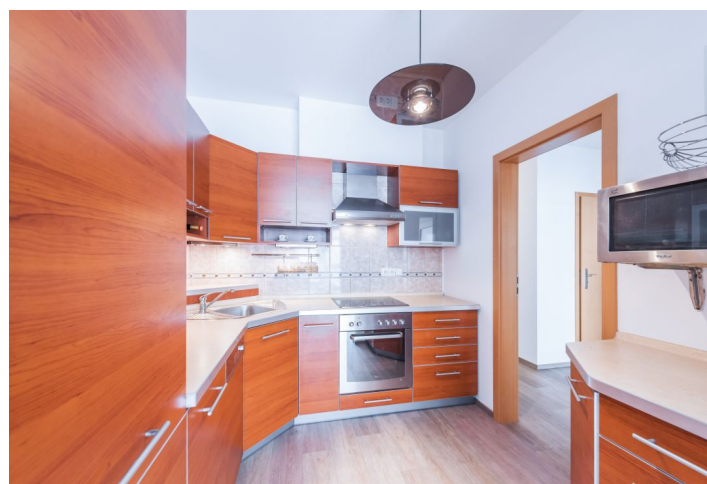
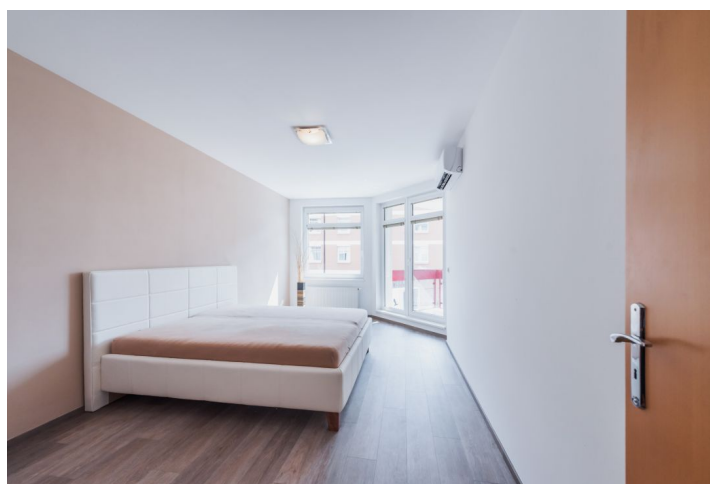


Apartment One-bedroom (2+1)

Sold

65 m², Prague 8, Libeň, Nad Okrouhlíkem



Apartment One-bedroom (2+1)

Sold

65 m², Prague 8, Libeň, Nad Okrouhlíkem

Total area	69 m ²
Floor area*	65 m ²
Balcony	4 m ²
Parking	300 000
Garage	Yes
Cellar	Yes
Service price	1 400 CZK monthly
PENB	C
Reference number	32812

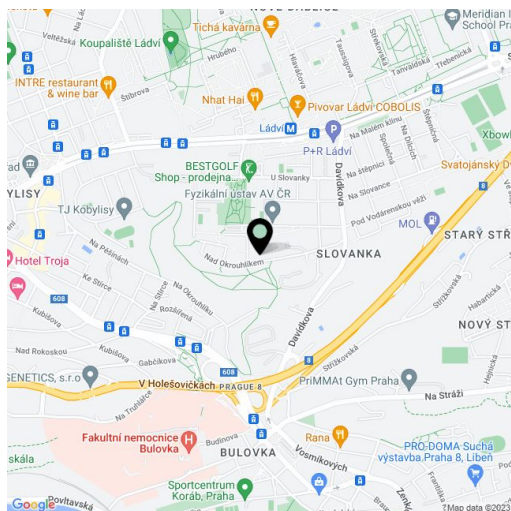
Bright, air-conditioned apartment with large rooms, a balcony, and a garage, located on the 2nd floor of a modern apartment building from 2005 with an elevator, situated on a quiet street on the edge of a forest park and a 5-minute walk from the metro and tram stations.

The layout consists of a living room, a partially separated kitchen, a bedroom, a bathroom (with a bath and shower), a separate toilet, a storage room, and a large entry hall. Both rooms have access to the **balcony**.

Features include new vinyl floors, air conditioning, plastic blinds, built-in wardrobes, and a fully fitted kitchen. Heating is provided by a gas boiler. The purchase price includes a **garage parking space and a cellar**.

A pleasant location on the edge of the **Okrouhlík protected area**, it stretches high above the city, yet the center is quickly accessible by car and public transport. The Ládví metro and tram station is 5 minutes from the building as well as all amenities: a shopping center, several supermarkets, restaurants, a health center, a pharmacy, a post office, and other services.

Interior 65.04 m², balcony 4.08 m², storage room (cellar) 2.5 m².



* Area of the unit according to the Civil Code. The area consists of the sum total area of the entire unit bounded by perimeter walls.

Apartment One-bedroom (2+1)

Sold

65 m², Prague 8, Libeň, Nad Okrouhlíkem

