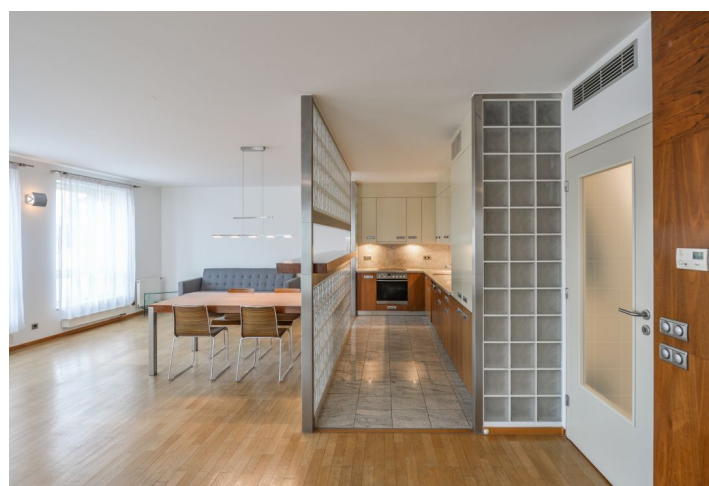
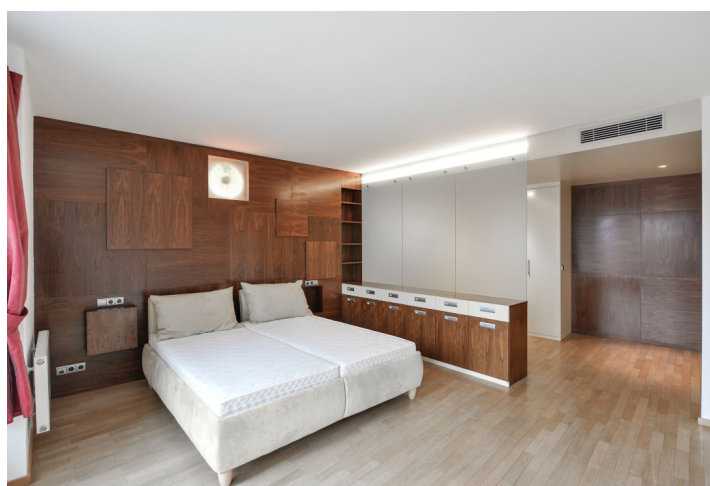
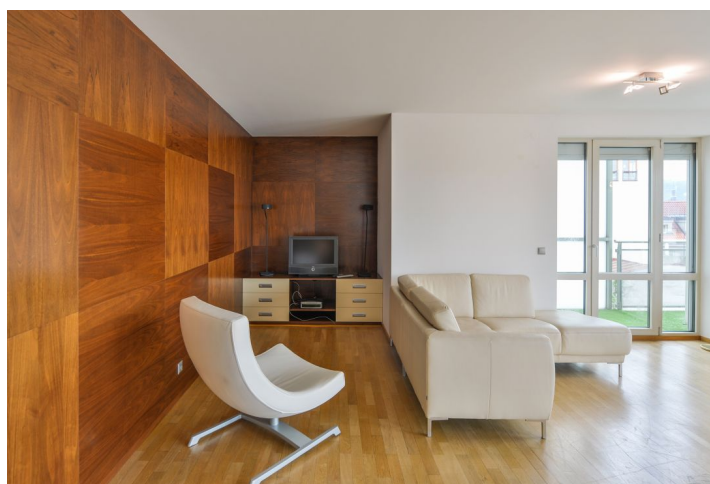


Apartment Two-bedroom (3+kk)

Rented

157 m², Prague 1, Staré Město, 28. října



Apartment Two-bedroom (3+kk)

Rented

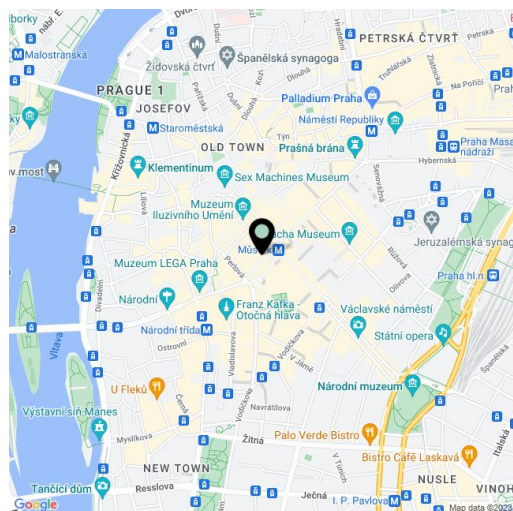
157 m², Prague 1, Staré Město, 28. října

Total area	160 m²
Floor area*	157 m²
Balcony	3 m²
Parking	-
Cellar	-
Service price	Fixed common building charges and water, electricity and gas CZK 12,000/month.
PENB	D
Reference number	32656
Available from	Immediately

Bright, spacious fully furnished apartment with a balcony and view of Prague Castle. Situated on the 6th floor of a unique residential building with an elevator, in a prime city center location with full amenities and instant access to the Můstek metro station (lines A and B), as well as Wenceslas Square and the tranquil Franciscan Garden.

The interior features a living room with a fully fitted kitchen with access to a balcony facing a quiet courtyard, a master bedroom with a walk-in closet and bathroom (walk-in shower, toilet, bidet), a second bedroom, a bathroom with a bathtub, toilet, and bidet, a separate toilet, and an entry hall with built-in wardrobes.

Hardwood parquet floors, natural marble tiles, large windows, large storage space, security entry door, central air-conditioning, electric blinds, TV, Miele kitchen appliances, dishwasher, washer with dryer, electronic security system.



* Size of the unit according to the Housing Act.

The area consists of the sum total of the internal area of every room.