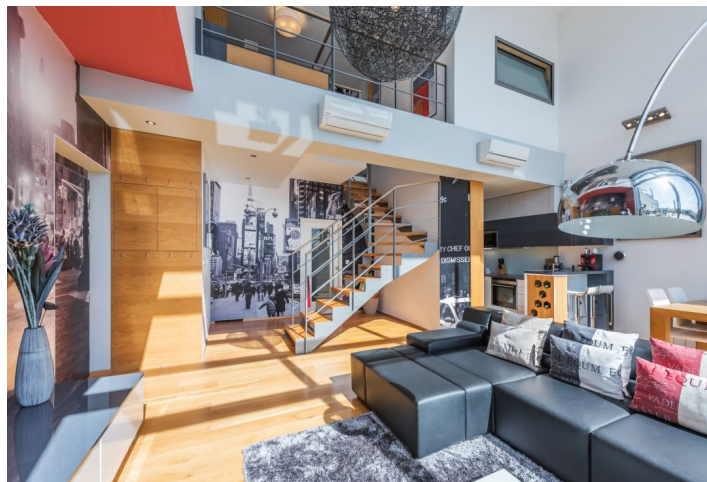
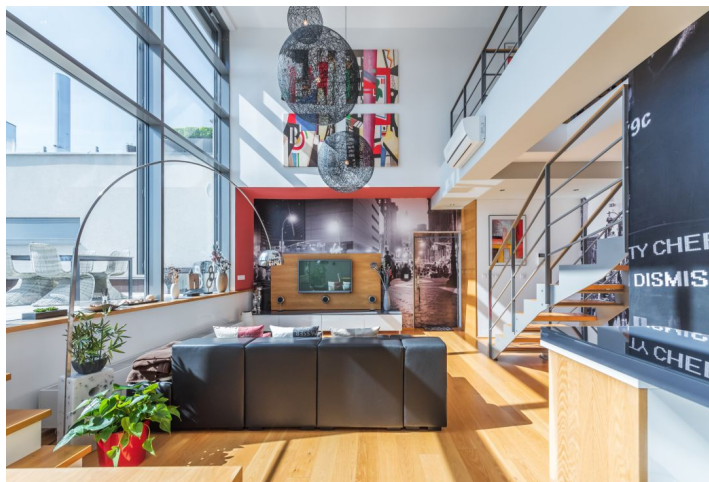


Apartment Two-bedroom (3+kk)

€ 2 203 | CZK 55 000

113 m², Prague 9, Hrdlořezy, Mezitratová



Apartment Two-bedroom (3+kk)

€ 2 203 | CZK 55 000

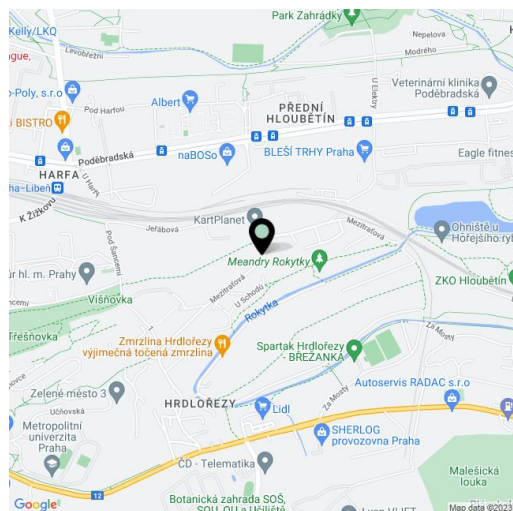
113 m², Prague 9, Hrdlořezy, Mezitratová

| | |
|------------------|---|
| Total area | 165 m ² |
| Floor area* | 113 m ² |
| Terrace | 52 m ² |
| Parking | Two garage parking spaces. |
| Garage | Yes |
| Cellar | Yes |
| Service price | Common building charges, energies and internet connection: approx. CZK 9,000 per month. |
| PENB | B |
| Reference number | 32630 |
| Available from | 01.06.2025 |

This rental apartment is part of the attractive Azalea residential project in a beautiful green location. Boasting a 52 m² terrace overlooking the surrounding greenery incl. the local forest, this completely furnished, quiet split-level apartment is situated on the 3rd topmost floor of a contemporary gated residential project with an elevator, shared garden, camera system, and underground parking. Set on a green hillside, with a private access road, in a tranquil natural location with quick access to the city center (15 min. by car), with a bus stop just 100 m away.

The lower level features a bright comfortable living room with a double height ceiling, a fully fitted open plan kitchen, a dining area and access to the terrace, a spacious bedroom with an en-suite bathroom (bathtub), a separate toilet, a walk-in closet, and an open entrance hall. The upper floor includes a spacious gallery, a bedroom with a walk-in closet and en-suite bathroom (walk-in shower, bathtub, bidet, toilet), and an additional walk-in closet.

Air-conditioning in the living room and upstairs bedroom, smart home system, hardwood floors, tiles, security entry door, external blinds, Bang & Olufsen sound system, central gas heating, washer, dishwasher, microwave oven, built-in storage space, Apple TV - two TVs, video entry phone, cellar. The enclosed compound with a chip access gate provides its residents with absolute peace and privacy. The apartment is offered including two parking spaces.



* Area of the unit according to the Civil Code. The area consists of the sum total area of the entire unit bounded by perimeter walls.