

Office space

€ 15.00 / m<sup>2</sup> | CZK 375 / m<sup>2</sup>

Prague 1, Nové Město, Národní



## Office space

€ 15.00 / m<sup>2</sup> | CZK 375 / m<sup>2</sup>

Prague 1, Nové Město, Národní

Service price	118 CZK monthly per m <sup>2</sup>
Available area	550 m <sup>2</sup>
Cellar	-
Parking	Yes
PENB	G
Reference number	32590

Variable office space for lease in the attic of a historic building, which is part of the early Baroque complex of the monastery of St. Voršily. The premises with elevator can be adapted to the needs of the tenant - from open space to separate offices (possibility of renting from 100 sq. m). Social facilities, kitchenette, technical room, air condition and internet will be included. South orientation to the quiet monastery park. Parking in Voršilská street or in the courtyard. Completion of the reconstruction within 3 months from the signing of the agreement.

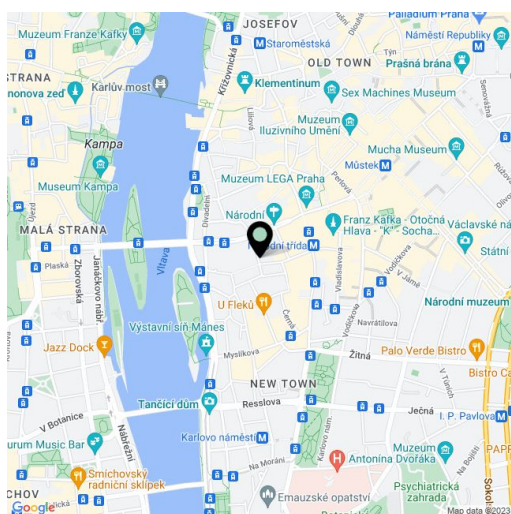
**Location:**

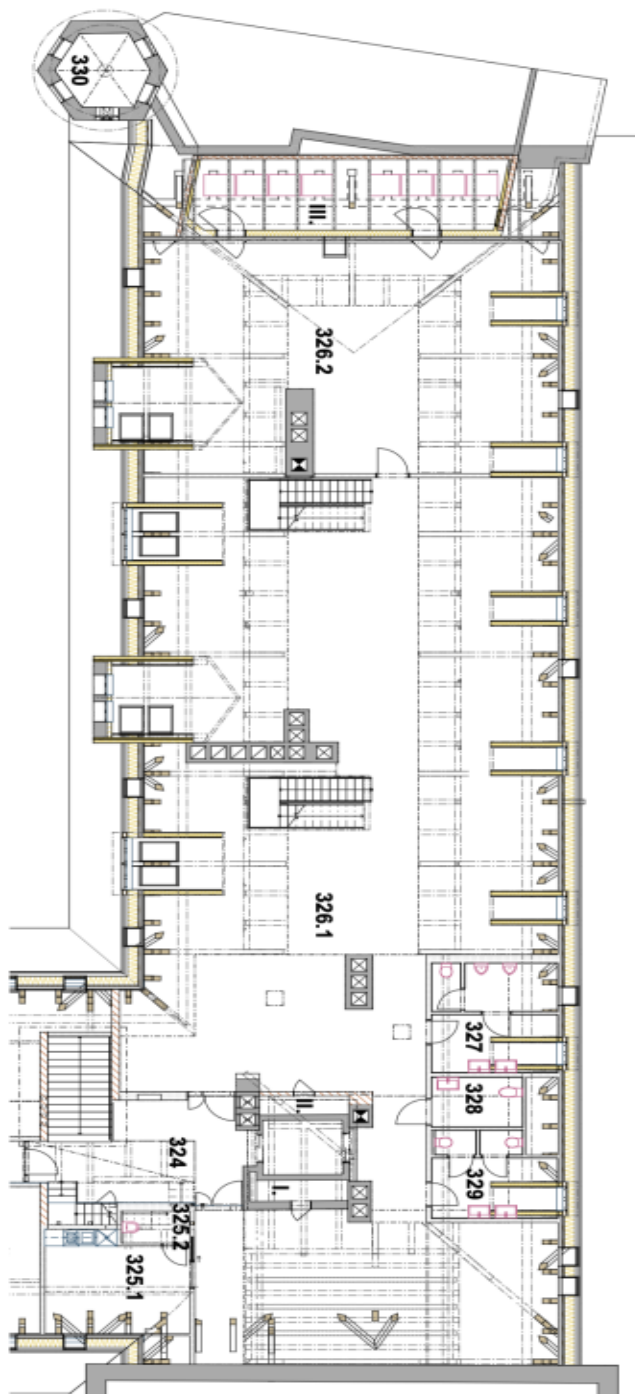
Excellent accessibility by car and public transport, a few steps from the Narodni trida or Mustek tram stop and metro stations (line B). Within walking distance of the National Theater, Vltava embankment, Žofín Island, and Charles Bridge.

**Features and Services:**

- Air conditioning
- Vinyl floors
- Low-voltage wiring
- Elevator
- ESS, EPS
- Home phone
- Parking on Voršilská Street
- Kitchenette and toilets

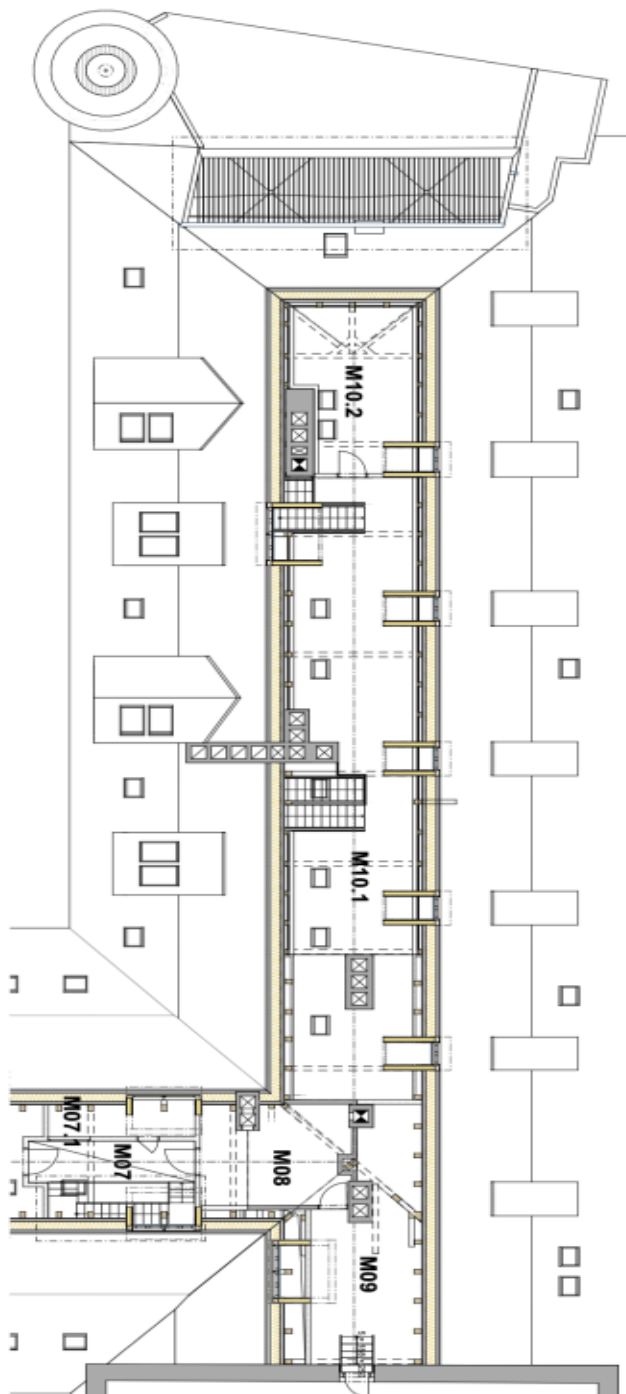
Rents and charges are listed without VAT. Lessee pays no commission.





Č.	Název místnosti	Plocha (m <sup>2</sup> )
324	HALA	20,76
325.1	ČADOVÁ KUCHYNKA	14,53
325.2	OKLID	2,34
326.1	KANCELAR	425,43
326.2	KANCELAR	98,28
327	WC MŮŽI	15,00
328	WC ŽENY	4,96
329	WC ŽENY	10,96
330	TECH. PROSTOR VĚŽIČKA	5,86
I.	INSTALAČNÍ ŠACHTA	2,07
II.	INSTALAČNÍ PROSTOR	1,80
III.	INSTALAČNÍ PROSTOR	37,25

**PŮDORYS 4.NP**  
M 1:150



Č.	Název místnosti	Plocha (m <sup>2</sup> )
M07	LAVKA	7,59
M07.1	TECHNICKÁ CHODBA	7,72
M08	KOTELNA	14,37
M09	TECHNICKÁ MÍSTNOST	26,08
M10.1	GALERIE	72,85
M10.2	GALERIE	19,30

**PŮDORYS MEZIPATRA**  
M 1:150