

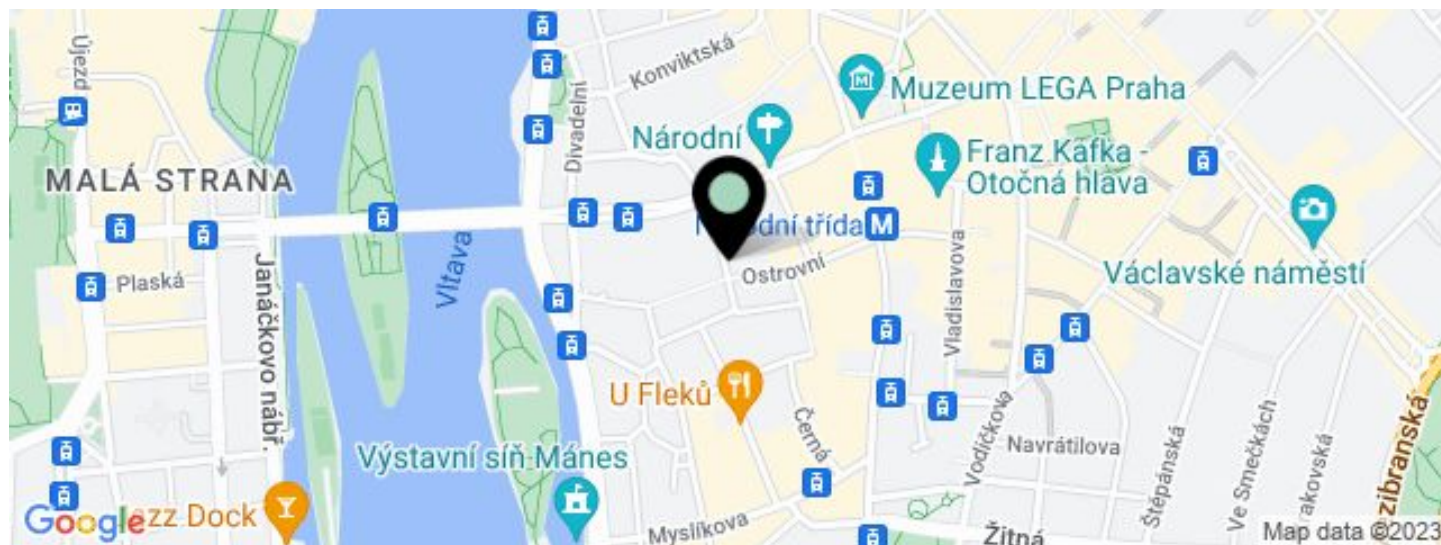
Office building

€ 15.00 / m<sup>2</sup> | CZK 374 / m<sup>2</sup>

550 m<sup>2</sup>, Prague 1, Staré Město, Voršilská



## Office building

€ 15.00 / m<sup>2</sup> | CZK 374 / m<sup>2</sup>550 m<sup>2</sup>, Prague 1, Staré Město, Voršilská

UNIT	AVAILABLE AREA	SERVICES	PARKING	MONTHLY RENT
Office space, attic	100 - 550 m <sup>2</sup>	118 CZK monthly per m <sup>2</sup>	Yes	€ 15 / m <sup>2</sup>

## Office building

€ 15.00 / m<sup>2</sup> | CZK 374 / m<sup>2</sup>550 m<sup>2</sup>, Prague 1, Staré Město, Voršilská

Service price	118 CZK monthly per m <sup>2</sup>
Total building area	902 m <sup>2</sup>
Tenant consumption	—
Parking	Yes
Parking service charges	—
Parking ratio	—
Certification	—
PENB	G
Reference number	32582

**Historical building with modern office space for lease in the center of Prague. The building is part of the Early Baroque St. Ursula church complex. Architect Kilián Ignác Dientzenhofer helped design the Ursuline convent.**

Original Baroque walls have been preserved in some of the attic offices. The complex is right next to the Church of St. Ursula. The space has been newly reconstructed to a high standard. Tenants will have access to part of the garden in the courtyard. The neighborhood is home to a complete infrastructure and a wide selection of restaurants and cafes.

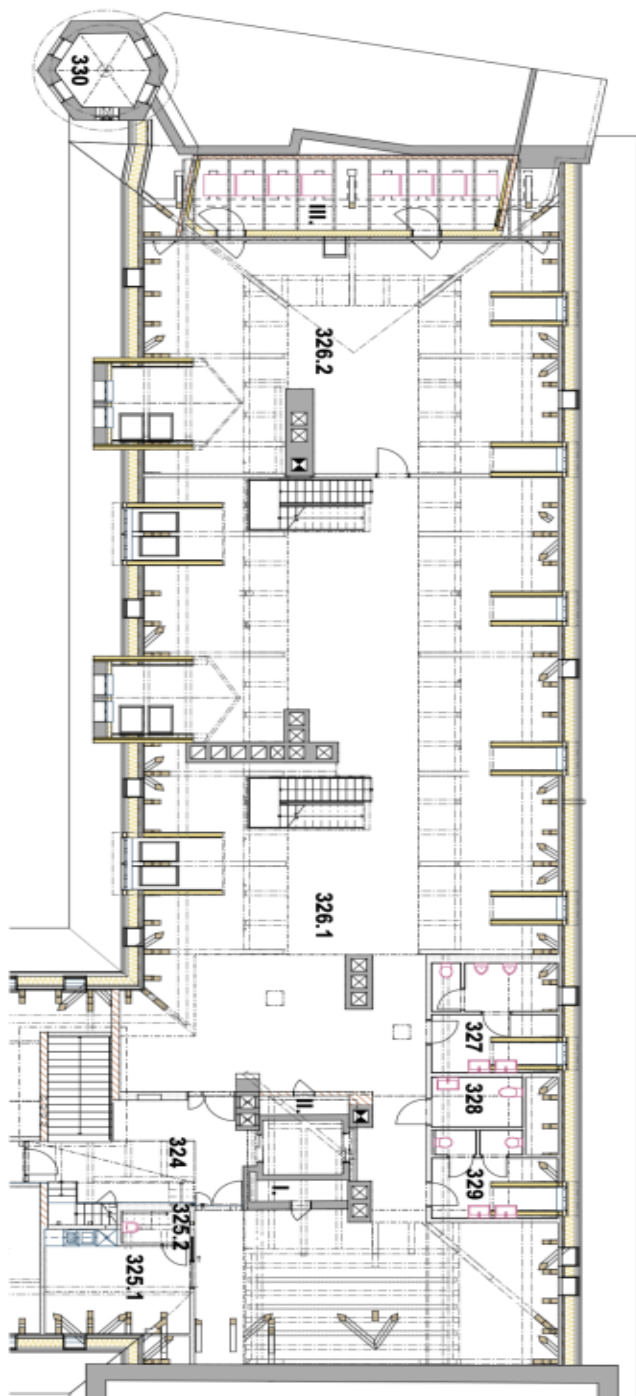
**Location:**

Excellent accessibility by car and public transport, a few steps from the Narodni trida or Mustek tram stop and metro stations (line B). Within walking distance of the National Theater, Vltava embankment, Žofín Island, and Charles Bridge.

**Features and Services:**

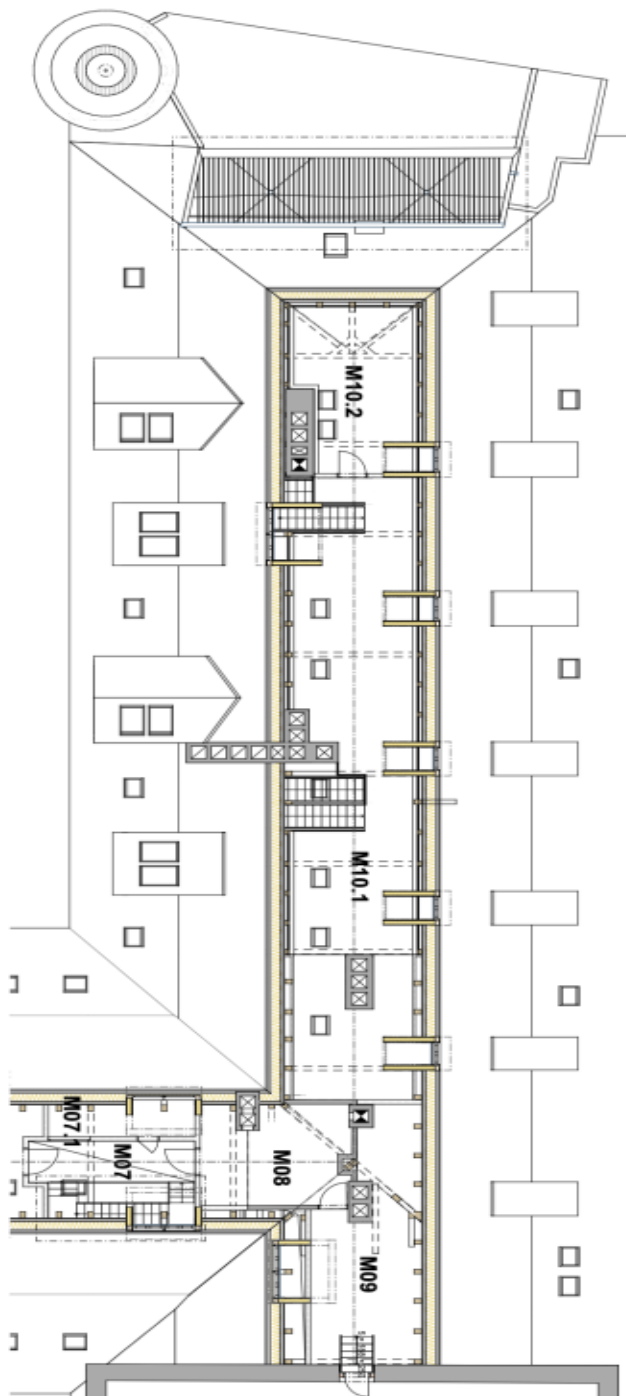
Air conditioning  
Vinyl floors  
Low-voltage wiring  
Elevator  
ESS, EPS  
Home phone  
Parking on Voršilská Street  
Kitchenette and toilets

Rents and service charges are listed without VAT. Lessee pays no commission.



Č.	Název místnosti	Plocha (m <sup>2</sup> )
324	HALA	20,76
325.1	ČADOVÁ KUCHYNKA	14,53
325.2	OKLID	2,34
326.1	KANCELÁŘ	425,43
326.2	KANCELÁŘ	98,28
327	WC MUŽI	15,00
328	WC ŽENY	4,98
329	WC ŽENY	10,98
330	TECH. PROSTOR VĚŽIČKA	5,86
I.	INSTALAČNÍ ŠACHTA	2,07
II.	INSTALAČNÍ PROSTOR	1,80
III.	INSTALAČNÍ PROSTOR	37,25

**PŮDORYS 4.NP**  
M 1:150



Č.	Název místnosti	Plocha (m <sup>2</sup> )
M07	LAVKA	7,59
M07.1	TECHNICKÁ CHODBA	7,72
M08	KOTELNA	14,37
M09	TECHNICKÁ MÍSTNOST	26,08
M10.1	GALERIE	72,85
M10.2	GALERIE	19,30

**PŮDORYS MEZIPATRA**  
M 1:150