

## Office building

Ask for price

Prague 1, Staré Město, Parizska



## Office building

**Ask for price**

Prague 1, Staré Město, Parizska

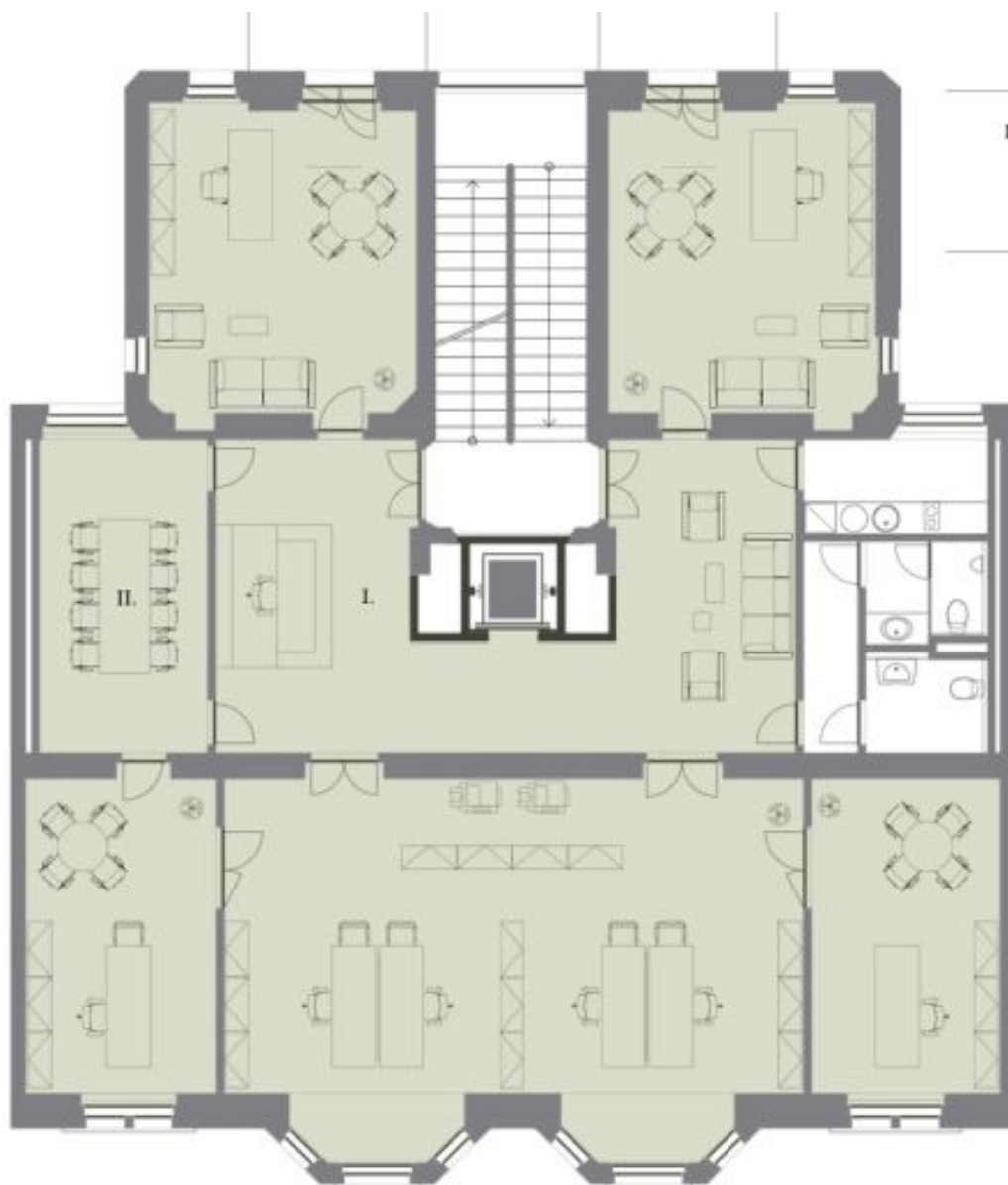
<b>Total building area</b>	1 200 m <sup>2</sup>
<b>Tenant consumption</b>	—
<b>Parking</b>	Yes
<b>Parking service charges</b>	—
<b>Parking ratio</b>	—
<b>Certification</b>	—
<b>PENB</b>	G
<b>Reference number</b>	32427

Office premises in an attractive location in a completely refurbished building with a lift located on Pařížská street, one of the most prestigious streets in Prague, steps from the Old Town Square, amidst luxurious shops and restaurants, in the historic and cultural center of the city. Features include internal partitioning, wooden parquet floors, heating system (floor convectors plus standard radiators), complete high voltage electro wiring with sockets and switches, lighting in suspended ceilings, air-conditioning system including terminals, W.C.s and preparation for the kitchenette installation. Parking available in the nearby Intercontinental Hotel garages at CZK 7500/ps/month. Rental price EUR 26/m<sup>2</sup>/month. Prices are listed without VAT. Lessee pays no commission.

Office building

Prague 1, Staré Město, Parizska

Ask for price



I. Vstupní hala/Reception  
Entrance hall/Reception  
II. Jednací místnost  
Meeting room

Pařížská ulice  
Pařížská street

KANCELÁŘSKÉ PROSTORY  
OFFICE SPACE

Pronajímatelná plocha  
Leaseable area

245

V METRECH  
ČTYŘECHEM  
IN SQM

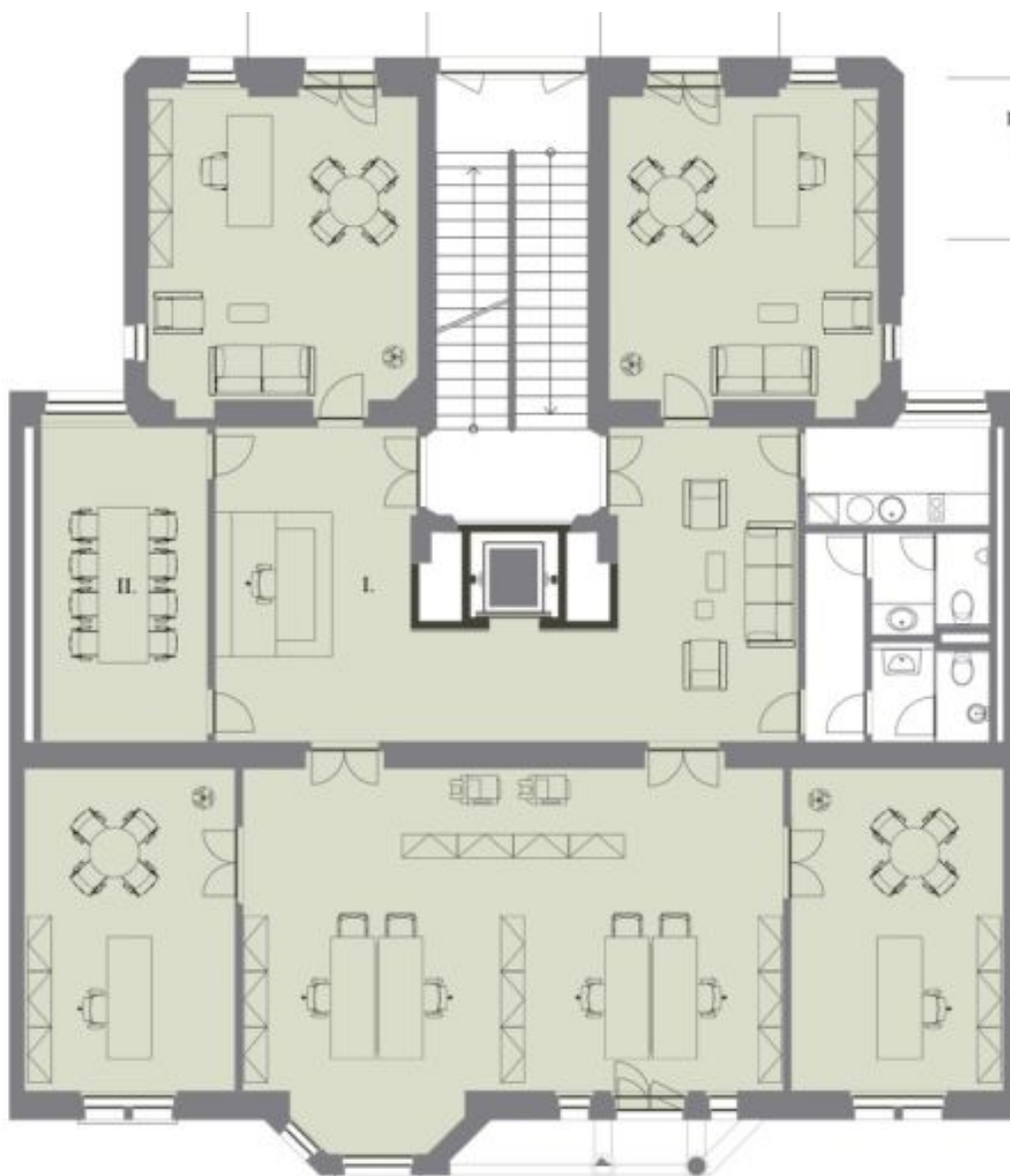
Nadzemní podlaží  
Floor 3, 4

03.- 04.

# Office building

Prague 1, Staré Město, Parizska

Ask for price



**KANCELÁŘSKÉ PROSTORY**  
OFFICE SPACE

Pronajímatelná plocha  
Leaseable area

**238**

V METRECH  
ČTVERECNÍCH  
IN SQM

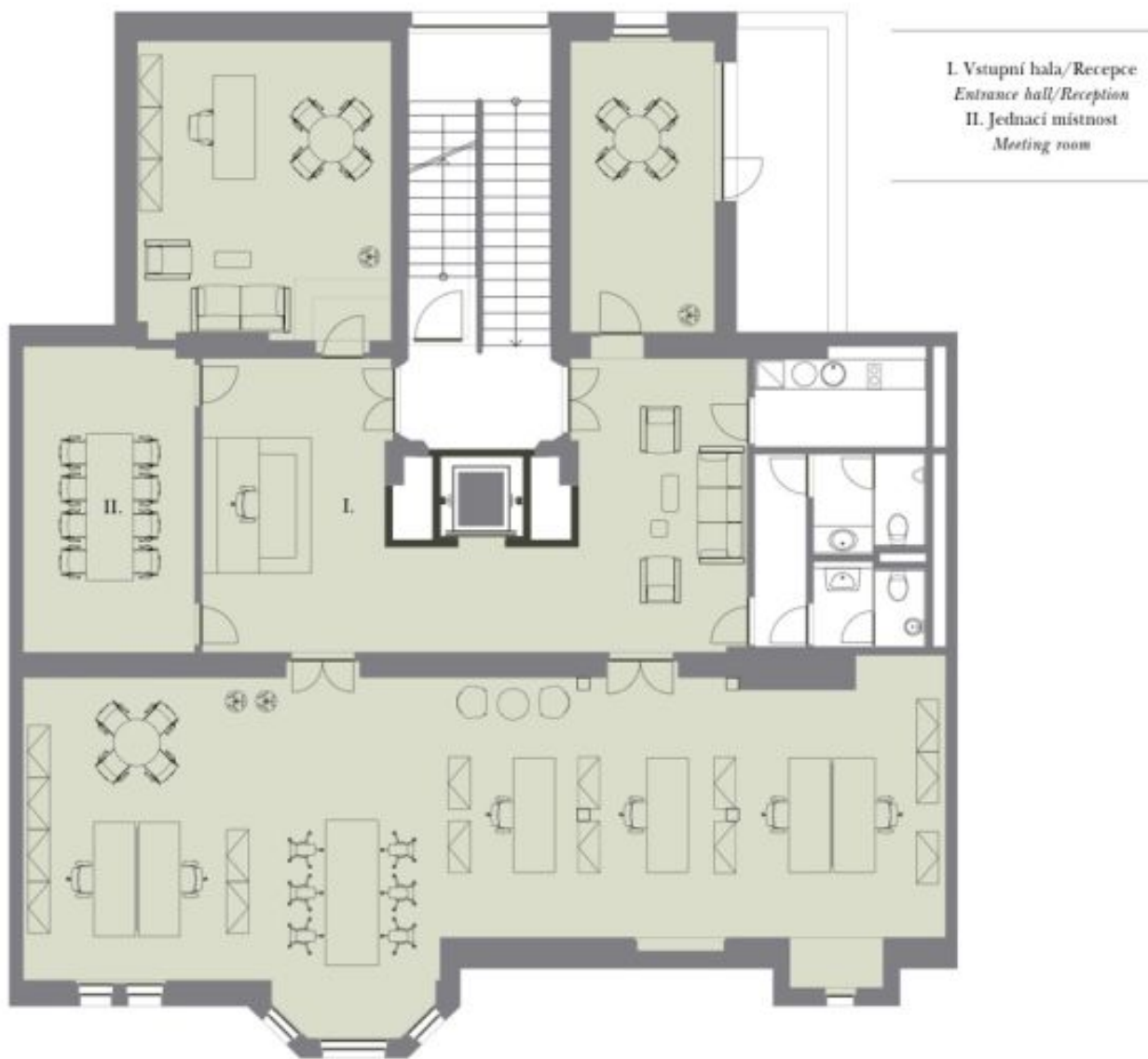
Nadzemní podlaží  
Floor 5

**05.**

Office building

Prague 1, Staré Město, Parizska

Ask for price



KANCELÁŘSKÉ PROSTORY  
OFFICE SPACE

Pronajímatelná plocha  
Leaseable area

216

V METRECH  
ČTVERECNÍCH  
IN SQM

Nadzemní podlaží  
Floor 6

06.