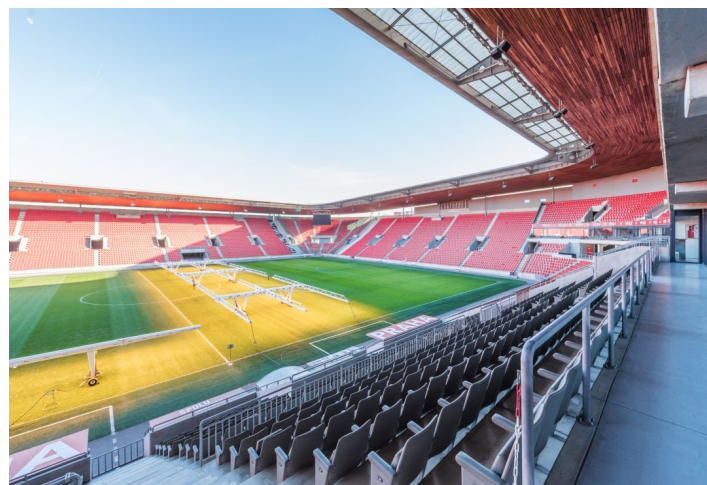
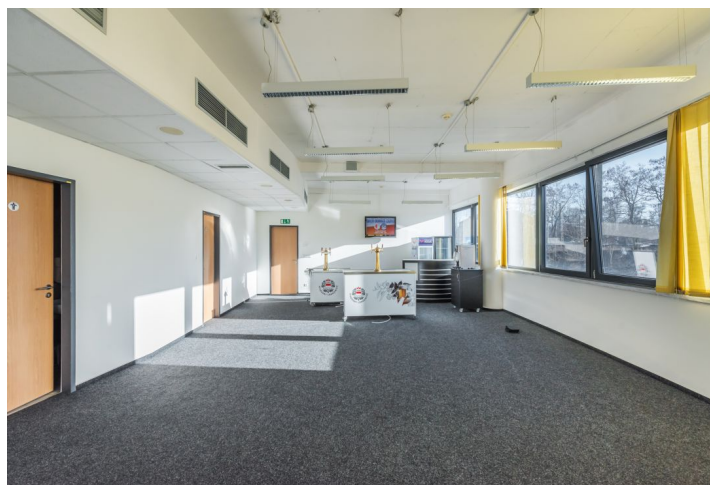
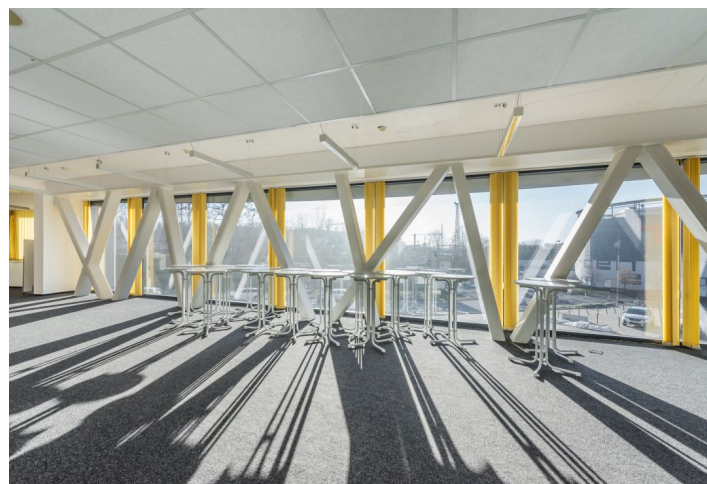


Office building

Rented

Prague 10, Vršovice, U Slavie



Office building

Rented

Prague 10, Vršovice, U Slavie

Service price	136 CZK monthly
Total building area	6 488 m ²
Tenant consumption	—
Parking	CZK 1500 / ps / month
Parking service charges	—
Parking ratio	—
Certification	—
PENB	G
Reference number	32423

Office space for lease in a multifunctional arena, which is the Slavia football team's home stadium. You can also lease space where you can organize training sessions, celebrations, or other social events. Parking is possible in front of the building in the P1 parking lot, the number of places is not limited, the price per parking space is CZK 1,500/ ps/month.

Location:

Space with very good accessibility by public transport. The Slavia tram stop is within walking distance and provides connections to the center; it's an 11-minute ride to the Náměstí Míru metro station (line A). The Eden shopping center with a supermarket, many other shops, and a fitness center is across the street. There is also a winter stadium and swimming pool with indoor and outdoor pools, and many cultural events take place in the area.

Facilities and services:

- reception
- elevators
- heat supply
- air conditioning
- guards
- cleaning and service
- Wi-Fi

Available immediately.

Rents and fees are without VAT. Tenants do not pay a commission.

