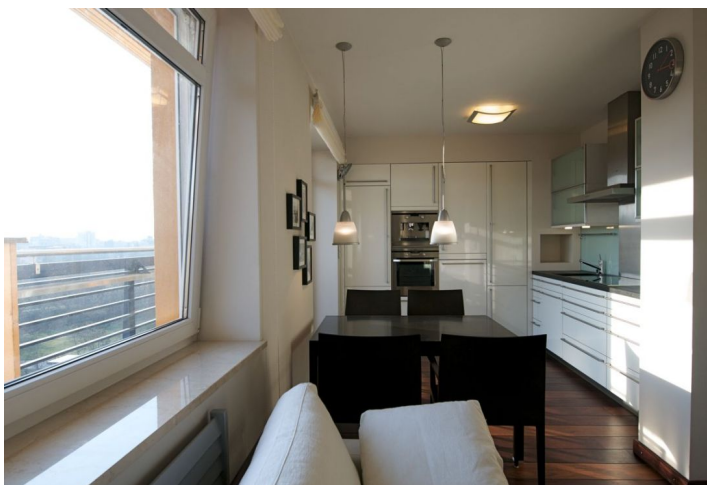


Apartment One-bedroom (2+kk)

Rented

55 m², Prague 9, Vysočany, Nepilova



Apartment One-bedroom (2+kk)

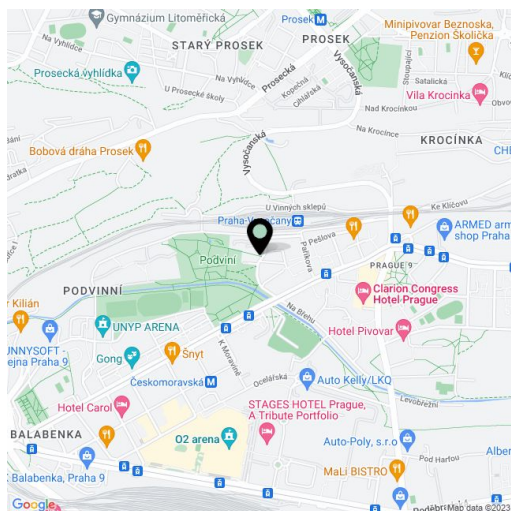
Rented55 m², Prague 9, Vysočany, Nepilova

Total area	55 m ²
Parking	-
Cellar	-
PENB	G
Reference number	3241
Available from	Immediately

Quality flat for rent. Fully furnished south oriented 1-bedroom apartment with a 20 m² terrace in a modern residential complex with 24 hour reception and security cameras in Prague 9.

Living room with fully fitted kitchen equipped with integrated appliances, bedroom with walk-in closet, bathroom with tub and toilet. The terrace with far reaching views has an awning and is accessed from both rooms.

Jatoba solid wood flooring throughout, tropical wood flooring on terrace, built-in storage, dishwasher, coffee maker, washer, plasma TV, DVD, audio system in all rooms including bathroom, telephone line, alarm, Internet, UPC satellite connection. Good connections to the center - 5 minutes to Vysočanská metro station, and trams. Common charges and utilities CZK 3.500/mo. An option to rent garage in the building.



* Area of the unit according to the Civil Code. The area consists of the sum total area of the entire unit bounded by perimeter walls.