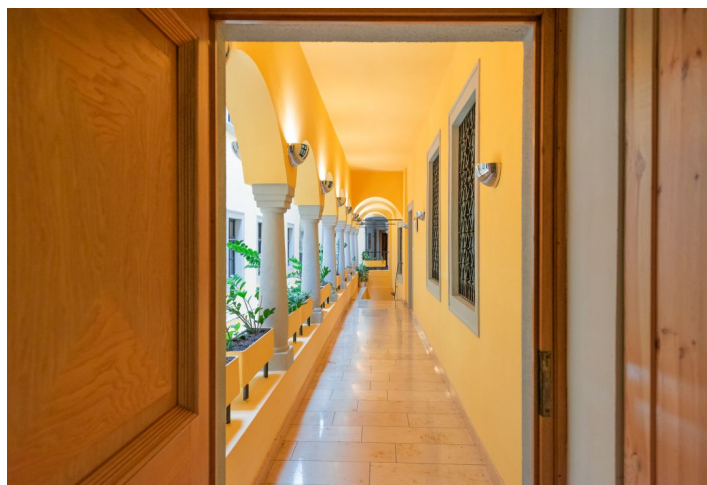


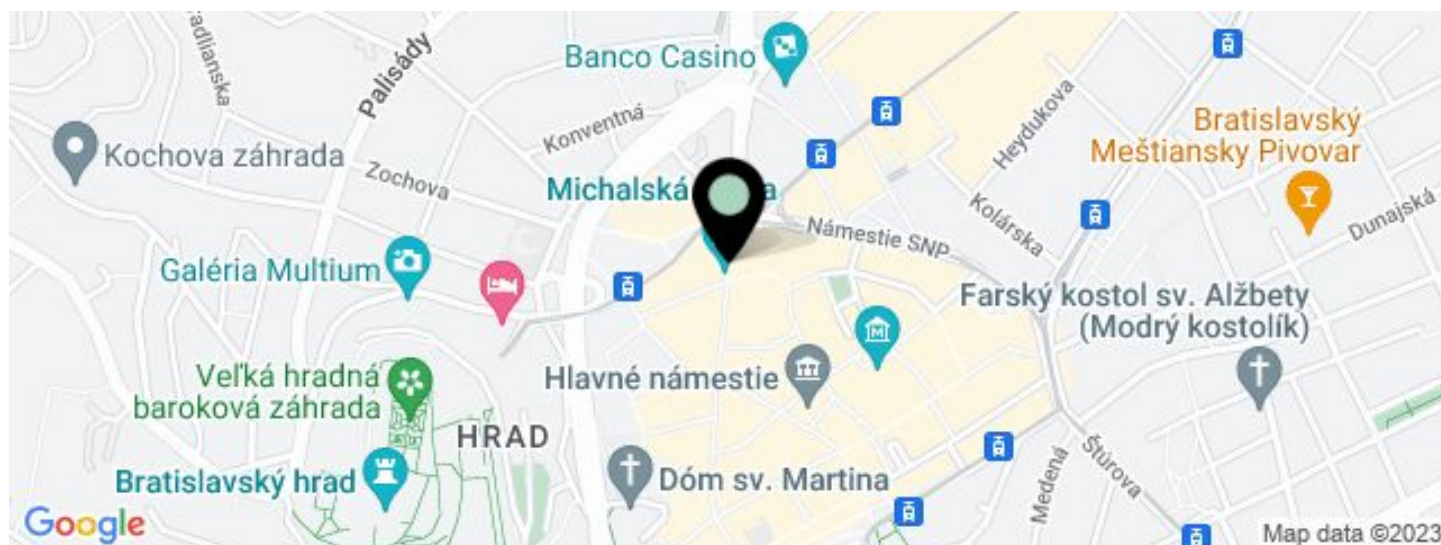
Office building

€ 8.00 - 20.00 / m<sup>2</sup> | CZK 200 - 500 / m<sup>2</sup>

663 m<sup>2</sup>, Bratislava I, Staré Mesto, Michalská



## Office building

€ 8.00 - 20.00 / m<sup>2</sup> | CZK 200 - 500 / m<sup>2</sup>663 m<sup>2</sup>, Bratislava I, Staré Mesto, Michalská

UNIT	AVAILABLE AREA	SERVICES	PARKING	MONTHLY RENT
2nd floor	135 m <sup>2</sup>	4 EUR monthly per m <sup>2</sup>	Yes	€ 10 / m <sup>2</sup>

## Office building

€ 8.00 - 20.00 / m<sup>2</sup> | CZK 200 - 500 / m<sup>2</sup>663 m<sup>2</sup>, Bratislava I, Staré Mesto, Michalská

Service price	5 EUR monthly per m <sup>2</sup>
Total building area	3 300 m <sup>2</sup>
Tenant consumption	—
Parking	-
Parking service charges	—
Parking ratio	—
Certification	—
PENB	B
Reference number	32365

**Multifunctional building with commercial and administrative premises, with a floor area of 3300 m<sup>2</sup> spread over 5 floors and 2 underground floors, with the possibility of parking nearby.**

**Location**

Michalska Street is a busy street that is attractive for both locals and tourists. Direct center of Bratislava, pedestrian zone below Michalska brana, 150 m from Franciscan square, 200 m from the main square, within reach are public transport connections.

**Facilities:**

- Air conditioning
- Openable windows
- PC cabling
- Shared bathroom
- Personal lift
- Cargo lift
- Reception on the ground floor
- Camera system
- Electronic doorman
- Wheelchair access
- Low voltage wiring
- Alarm
- 24 hrs. security service
- Parking nearby

Rent and fees are exclusive of VAT. Lessee pays no commission.