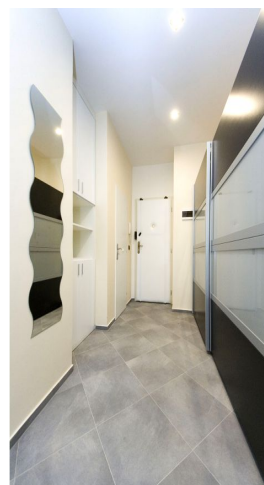
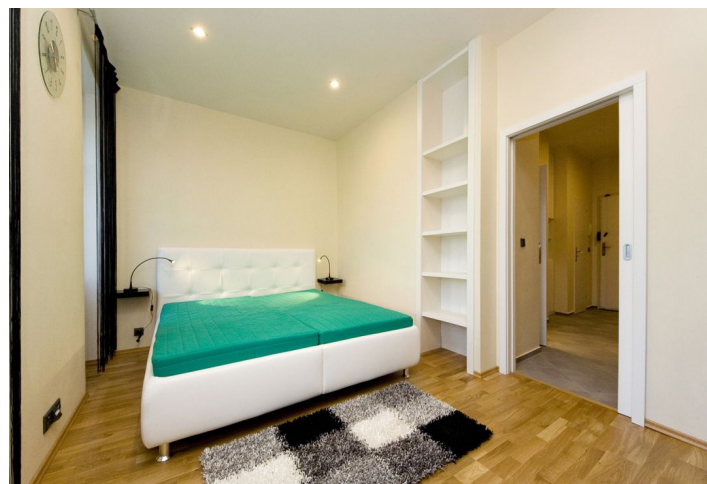


## Apartment One-bedroom (2+kk)

Rented

52 m<sup>2</sup>, Prague 7, Holešovice, Železničářů



# Apartment One-bedroom (2+kk)

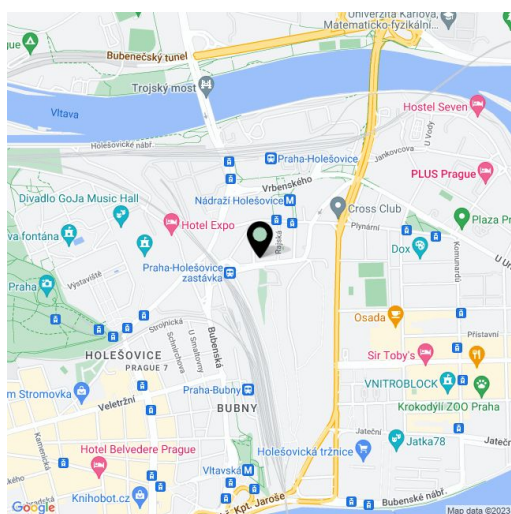
**Rented**52 m<sup>2</sup>, Prague 7, Holešovice, Železničářů

Total area	52 m <sup>2</sup>
Parking	-
Cellar	Yes
PENB	G
Reference number	3236
Available from	Immediately

Upper ground floor fully furnished 1-bedroom design flat in a reconstructed building located close to Nádraží Holešovice metro station, line C.

There is living room with a fully fitted open kitchen with built-in appliances, shower bathroom, and an entry hall with built-in wardrobes.

Wood floors, hardwood doors, slow burning stove, gas heating, security door, microwave, PC cabling, Internet connection. Cellar available for CZK 1000/month. Parking in front of the building. Good public amenities - school and kindergarten 100 m, and quick connection to the center - metro station, bus and tram stop 100 m. Common building charges CZK 500 per person.



\* Area of the unit according to the Civil Code. The area consists of the sum total area of the entire unit bounded by perimeter walls.

## Apartment One-bedroom (2+kk)

Rented

52 m<sup>2</sup>, Prague 7, Holešovice, Železničářů

