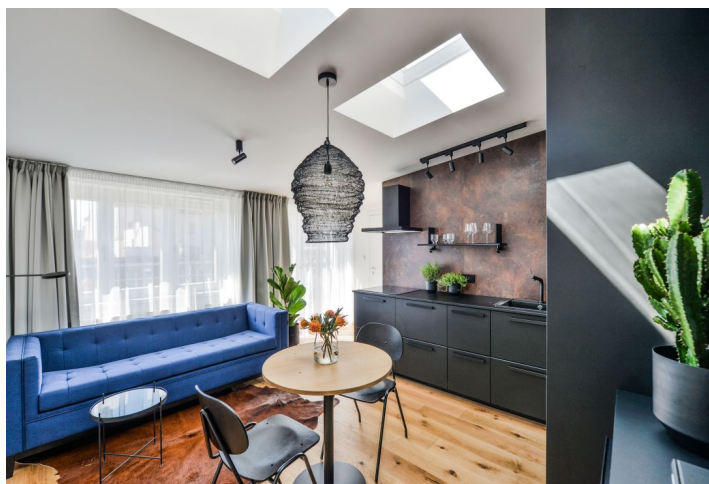


Apartment One-bedroom (2+kk)

Rented

43 m², Prague 7, Holešovice, Heřmanova



Apartment One-bedroom (2+kk)

Rented

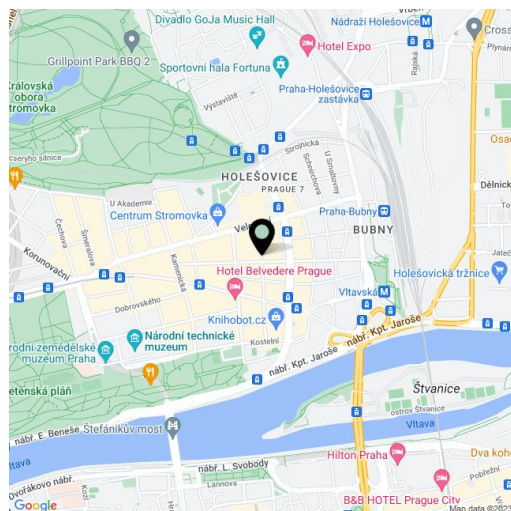
43 m², Prague 7, Holešovice, Heřmanova

| | |
|------------------|--|
| Total area | 57 m ² |
| Floor area* | 43 m ² |
| Terrace | 14 m ² |
| Parking | - |
| Cellar | Yes |
| Service price | Service charges and water for one person CZK 2,000/month. Gas and electricity - transferred to the tenant. |
| PENB | C |
| Reference number | 32272 |
| Available from | Immediately |

Boasting a 14 m² south-facing terrace, this air-conditioned attic apartment, fully equipped with design furniture, is set on the 5th top floor of a completely refurbished residential building with a new elevator and preserved original details. Nicely located within walking distance of two popular Prague parks - Stromovka and Letná. A trendy area with full amenities, numerous restaurants, bistros and cafes, a two min. walk from a tram stop with quick connections to the city center and Hradčanská and Vltavská metro stations. A highly sought-after location within easy reach of the airport and international schools in Prague 6.

The interior features an air-conditioned living room with a fully fitted open plan kitchen, dining area, and access to the terrace facing the quiet green back yard, and one bedroom with ample built-in wardrobes and storage. There is a bathroom including a walk-in shower and a toilet, and an entrance hall with more built-in wardrobes.

Hardwood floors, decorative tiles, security entry door, light tunnels, gas boiler, washer, dryer, dishwasher, microwave oven, sofa bed, garden furniture, **cellar**.



* Size of the unit according to the Housing Act.

The area consists of the sum total of the internal area of every room.