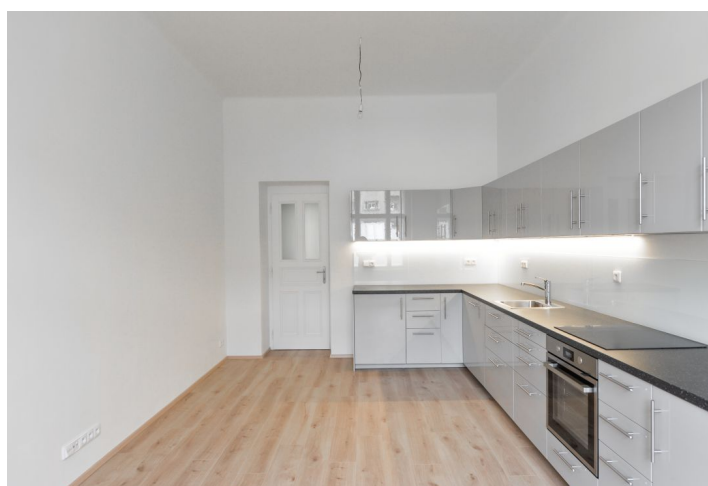


## Apartment Two-bedroom (3+1)

Rented

117 m<sup>2</sup>, Prague 7, Bubeneč, Na Výšinách



# Apartment Two-bedroom (3+1)

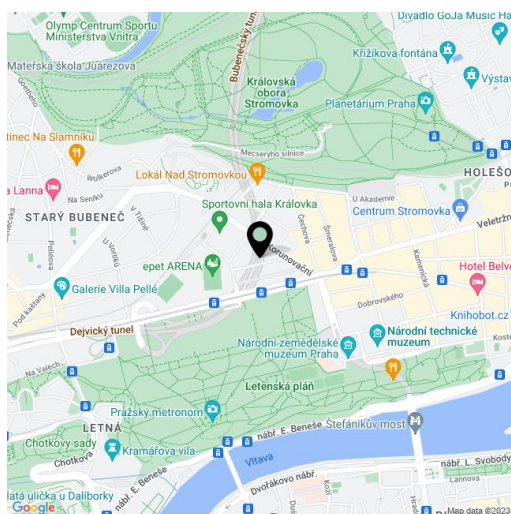
**Rented**117 m<sup>2</sup>, Prague 7, Bubeneč, Na Výšinách

Total area	117 m <sup>2</sup>
Parking	-
Cellar	-
PENB	D
Reference number	32130
Available from	Immediately

This spacious, fully newly renovated 2-bedroom 2-bathroom apartment is on the first floor of a fully refurbished residential building with a lift. The building is set in a quiet street in a sought after Prague 7 neighborhood in close vicinity of the Sparta stadium, just a few minutes from the Letná and Stromovka Parks. Location with a fine selection of cafes, restaurants, trendy bistros, shopping and cultural venues, and very quick access to the city center, just one tram stop from Hradčanská metro station. Conveniently located for the airport and Prague 6 international schools.

The apartment features two separate bedrooms, a fully fitted eat-in kitchen, a living room, two bathrooms (walk-in shower / bathtub), a separate toilet, and an entrance hall.

Preserved original details, high ceilings, large windows, solid wood parquet floors, vinyl floors, tiles, gas boiler, induction cooktop, dishwasher. Common building charges CZK 3.800/month. Gas and Electricity is paid separately.



\* Area of the unit according to the Civil Code. The area consists of the sum total area of the entire unit bounded by perimeter walls.

## Apartment Two-bedroom (3+1)

Rented

117 m<sup>2</sup>, Prague 7, Bubeneč, Na Výšinách

