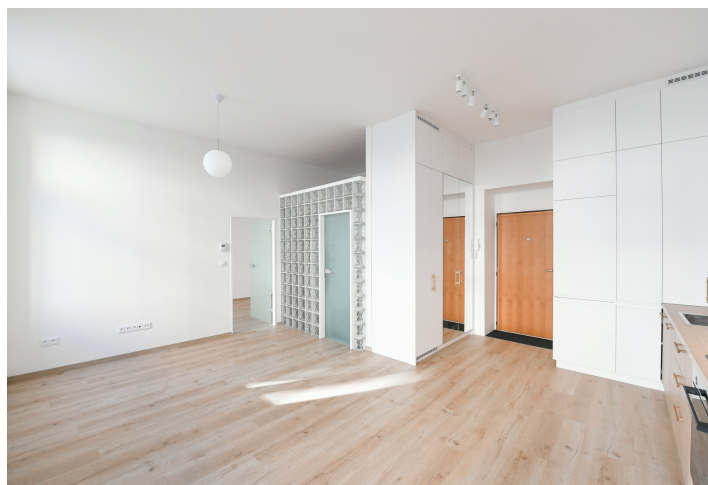


Apartment One-bedroom (2+kk)

€ 1 040 | CZK 26 000

49 m², Prague 2, Vinohrady, Bělehradská



Apartment One-bedroom (2+kk)

€ 1 040 | CZK 26 000

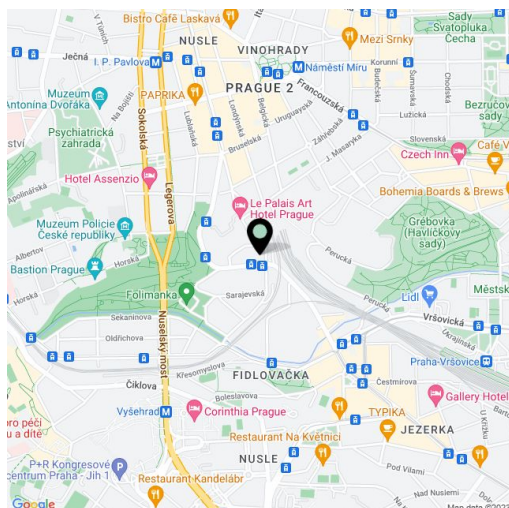
49 m², Prague 2, Vinohrady, Bělehradská

Total area	49 m ²
Parking	-
Cellar	Yes
Service price	Monthly deposit for services and water: CZK 1,800 an additional person + CZK 800. Electricity and gas are billed separately.
PENB	Not required
Reference number	32014
Available from	Immediately

This unfurnished, renovated apartment is on the 2nd floor of a well-maintained refurbished Art Nouveau building with an elevator mere steps from a tram stop. Located in the Vinohrady residential neighborhood in close vicinity of Folimanka Park, within walking distance of Havlíčkovy Sady Park, with quick connections to the city center. The building is situated just a few tram stops from the I.P. Pavlova and Náměstí Míru metro stations, with full amenities in the area.

The interior includes a living room with a fitted open plan kitchen, a built-in shower bathroom with a toilet, and one bedroom. Windows face the street.

Vinyl floors, tiles, high ceilings, large windows, security entry door, gas boiler, washing machine, storage unit.



* Area of the unit according to the Civil Code. The area consists of the sum total area of the entire unit bounded by perimeter walls.