

Apartment Two-bedroom (3+kk)

Sold

82 m², Prague 7, Bubeneč, U Studánky



Apartment Two-bedroom (3+kk)

Sold

82 m², Prague 7, Bubeneč, U Studánky

Total area	87 m ²
Floor area*	82 m ²
Terrace	5 m ²
Parking	-
Cellar	Yes
Service price	3 100 CZK monthly
PENB	B
Reference number	31804

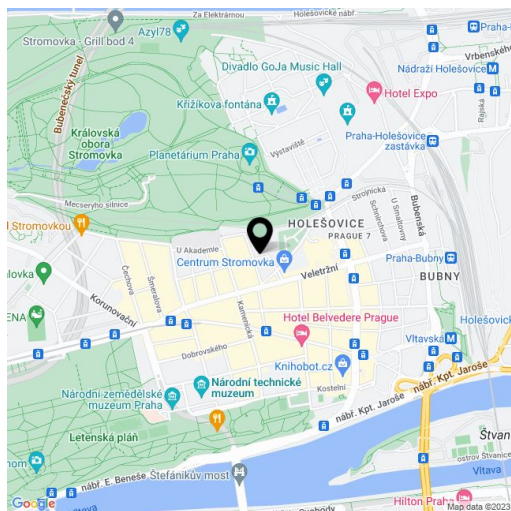
This newly built air-conditioned attic apartment with a terrace overlooking the courtyard is located on the 4th floor of a nicely renovated brick building with an elevator. The attractive location of Letná just a few steps from Stromovka Park provides complete civic services and quick access to the city center.

Its practical layout consists of living room with a kitchen and access to the terrace, 2 bedrooms separated from the common areas by a corridor, a bathroom, a guest toilet, a foyer, and a closet with a preparation for a washing machine and a dryer.

Facilities include **wooden floors, wooden windows** (skylights and French), air conditioning units in all rooms, plasterboard ceilings, doors with concealed hinges, and complete sanitary facilities. The apartment comes with a **cellar**.

The building stands on a side one-way street close to a kindergarten and elementary school, the AFA, a Sokol, a cafe, or a grocery store. Nearby, there are full civic amenities (supermarket, pharmacy, post office, shops, a restaurant, or a high school). The **Stromovka** and **Letenské Sady** gardens are close-by. The transport connections are provided by trams, the ride to the Vltavska (line C) and Hradčanská (line A) metro stations takes 4 minutes, the tram ride to the center takes less than 10 minutes.

Interior 82.2 m², terrace 5 m², cellar 3.9 m².



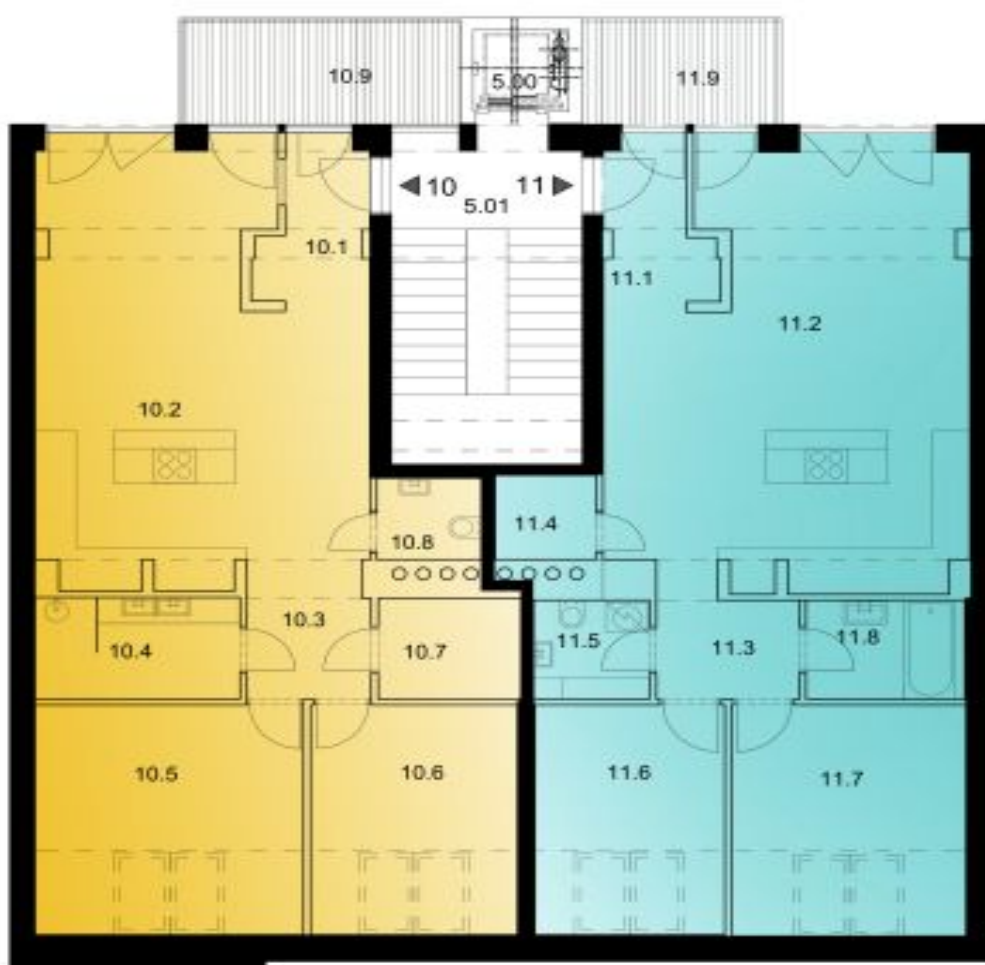
* Area of the unit according to the Civil Code. The area consists of the sum total area of the entire unit bounded by perimeter walls.

Apartment Two-bedroom (3+kk)

Sold

82 m², Prague 7, Bubeneč, U Studánky

	BYT 11	82,3 m ²
	11 - terasa	5 m ²



Apartment Two-bedroom (3+kk)

Sold

82 m², Prague 7, Bubeneč, U Studánky

Číslo místnosti	Název	Plocha (m ²)	Plán
100	výtah	2,2	
101	schodiště a šatovna	5,09	
111	3+kk	82,0	
102	obývací	4,16	
103	obývací pokoj	11,70	
104	kuchyně	4,38	
105	spalnice	5,84	
106	ložnice	7,92	
107	ložnice	12,20	
108	terasa	4,40	
109	WC	2,74	
110	terasa	1,16	
10.000		82,0	+1,27



1:50