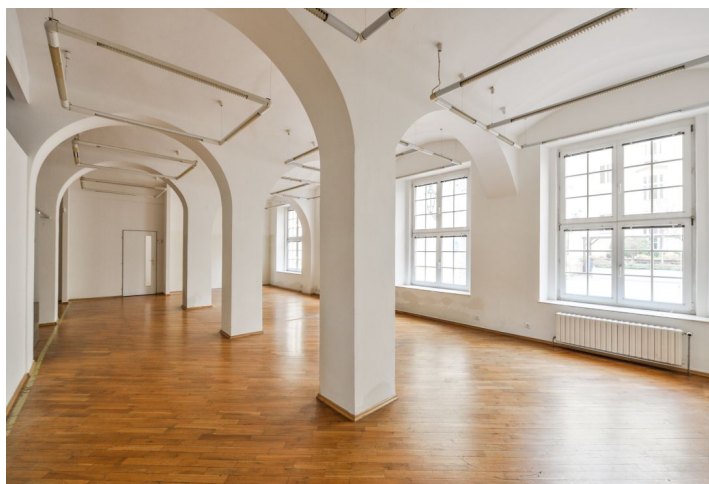


Office building

Ask for price

Prague 2, Nové Město, Karlovo náměstí



Office building

[Ask for price](#)

Prague 2, Nové Město, Karlovo náměstí

Total building area	1200 m ²
Tenant consumption	—
Parking	CZK 4000 / ps / month
Parking service charges	—
Parking ratio	—
Certification	—
PENB	G
Reference number	31283

This complex consisting of several historical buildings located on Karlovo náměstí Square and built in 1900 according to the designs of the architect Rudolf Tereba offers office space for rent. Parking is available in an underground garage and in the courtyard, and there is also a restaurant.

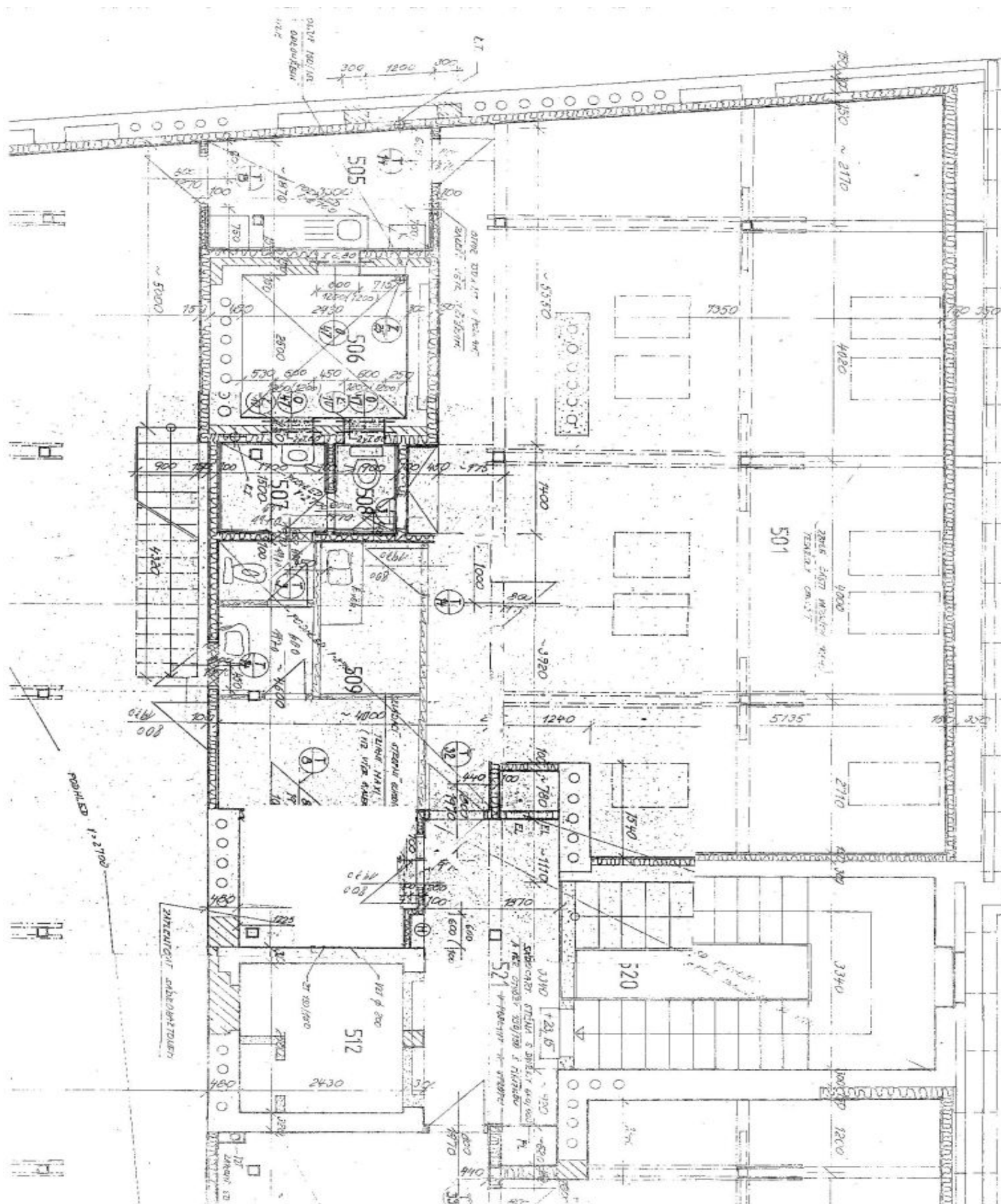
Location:

The building is located on Karlovo náměstí Square in the center of Prague. There is a park in the immediate vicinity, and it is easily accessible by car and public transport - the Karlovo náměstí metro station (line B), and numerous tram and bus stops are only a few steps away.

Facilities and services:

- reception
- air conditioning
- CCTV
- security service
- elevators
- storage
- kitchen
- openable windows
- interior blinds
- new floors
- kitchen and toilets
- parking spaces in the courtyard and in the underground garage
- shops and restaurants in the adjacent department store

Rents and fees are listed without VAT. Tenants do not pay a commission.



Office building

Ask for price

Prague 2, Nové Město, Karlovo náměstí

