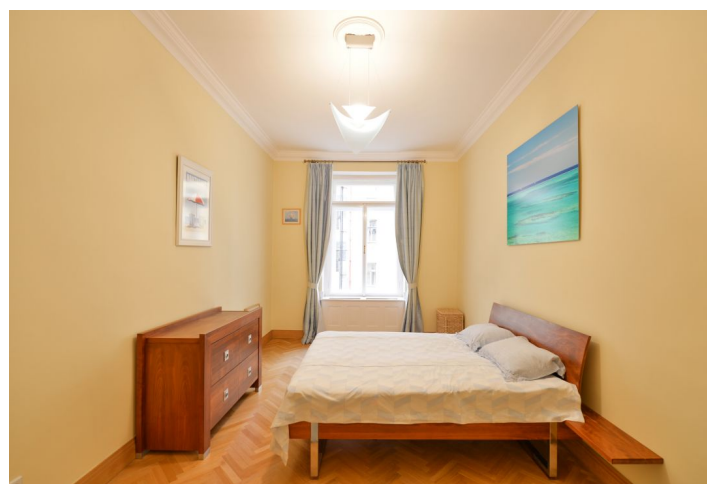


Apartment Two-bedroom (3+1)

Rented

110 m², Prague 2, Vinohrady, Mánesova



Apartment Two-bedroom (3+1)

Rented

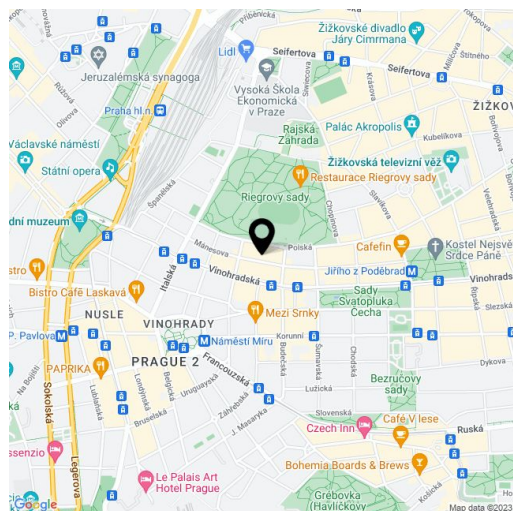
110 m², Prague 2, Vinohrady, Mánesova

Total area	110 m ²
Parking	-
Cellar	-
PENB	G
Reference number	31282
Available from	Immediately

This refurbished and furnished 2-bedroom apartment is situated on the first floor of a renovated Art Nouveau building with an elevator and a reception, located on a quiet tree-lined street, just moments from Riegrovy Sady Park. A highly sought-after residential neighborhood with full amenities within easy reach and great access to the city center, just two blocks from Jiřího z Poděbrad Square with a metro station, tram stop, and a popular farmers' market.

The apartment features a living room connected by a door to a fully fitted eat-in kitchen with a bay window, two bedrooms facing the quiet courtyard, a small closet in one bedroom, a bathroom with a bathtub with a shower screen, a separate toilet, and a large central entrance hall with a vaulted ceiling.

Preserved original details, high ceilings, large windows, **solid wood parquet floors**, tiles, gas boiler, Miele washer and dryer, dishwasher, microwave oven, TV, alarm, video entry phone. Service charges and reception fee CZK 2,500 per month. Utilities are billed separately.



* Area of the unit according to the Civil Code. The area consists of the sum total area of the entire unit bounded by perimeter walls.