

Office space

Rented

Prague 2, Nové Město, Karlovo náměstí



## Office space

Rented

Prague 2, Nové Město, Karlovo náměstí

Service price	39 CZK monthly per m <sup>2</sup>
Available area	87 m <sup>2</sup>
Cellar	-
Parking	CZK 4000 / ps / month
PENB	G
Reference number	31277

Office space for rent on the 6th floor of a historical building located on Karlovo náměstí Square constructed in 1900 according to the designs of the architect Rudolf Tereba. Parking is available in an underground garage and in the courtyard, and there is also a restaurant.

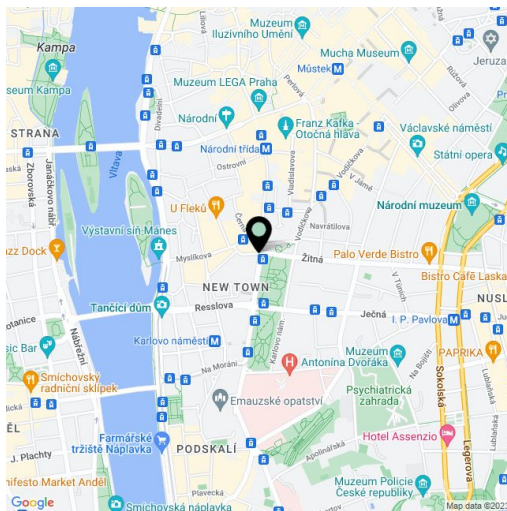
**Location:**

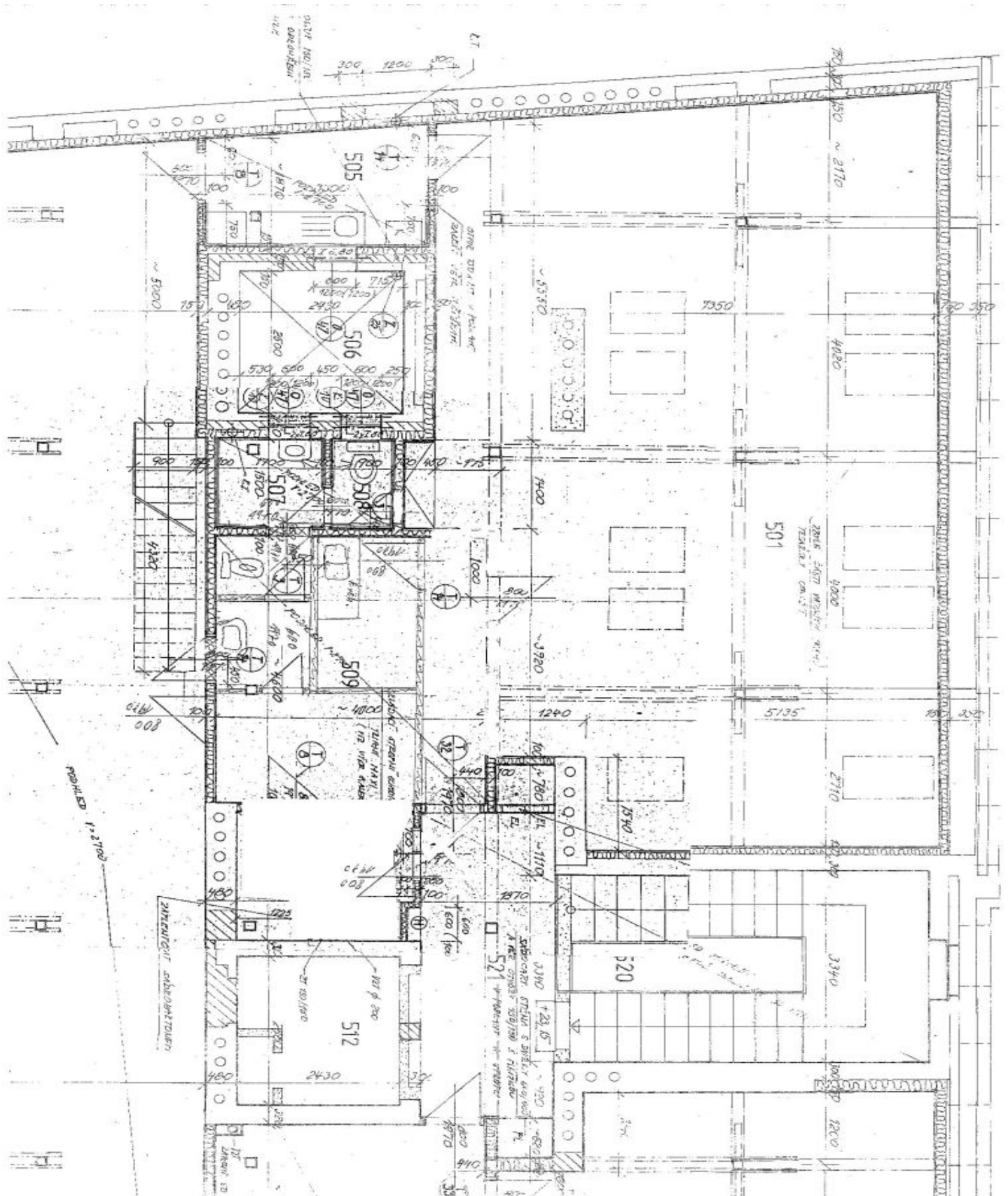
The building is located on Karlovo náměstí Square in the center of Prague. There is a park in the immediate vicinity, and it is easily accessible by car and public transport - the Karlovo náměstí metro station (line B), and numerous tram and bus stops are only a few steps away.

**Facilities and services:**

- reception
- air conditioning
- CCTV
- security service
- elevators
- storage
- kitchen
- openable windows
- interior blinds
- new floors
- kitchen and toilets
- parking spaces in the courtyard and in the underground garage
- shops and restaurants in the adjacent department store

Rents and fees are listed without VAT. Tenants do not pay a commission.





# Office space

Rented

Prague 2, Nové Město, Karlovo náměstí

