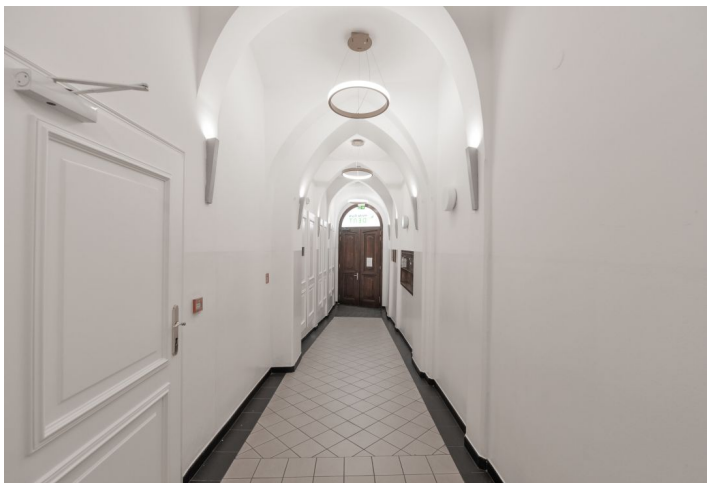


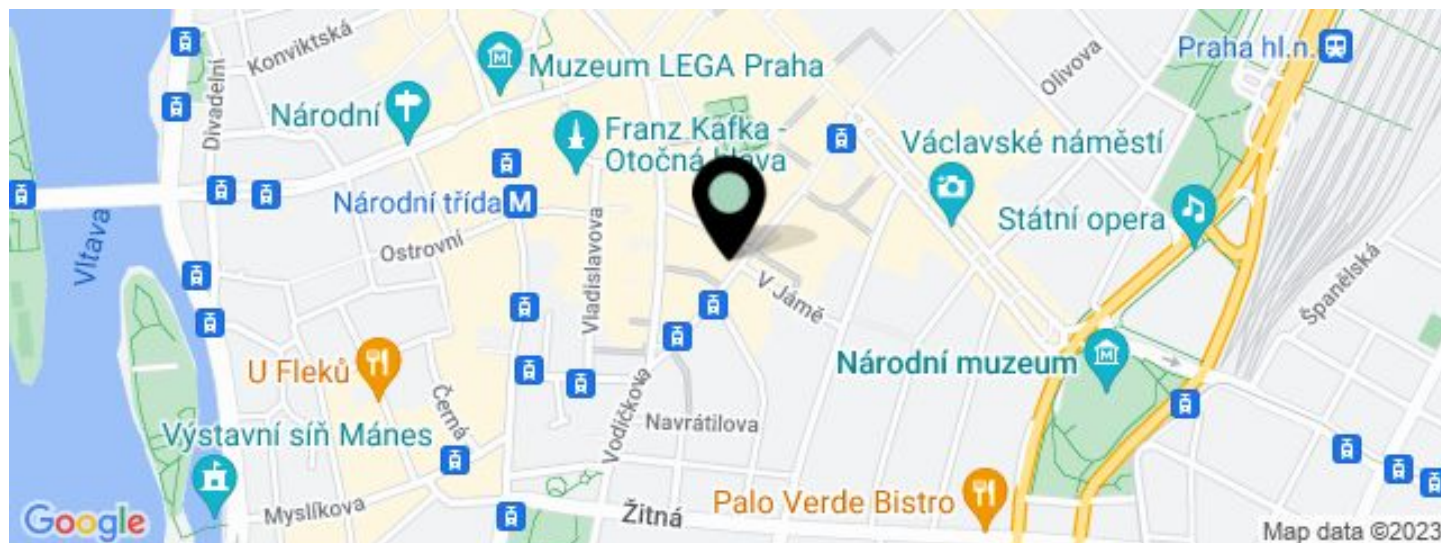
Office building

€ 13.50 / m² | CZK 338 / m²

299 m², Prague 1, Nové Město, Vodičkova



Office building

€ 13.50 / m² | CZK 338 / m²299 m², Prague 1, Nové Město, Vodičkova

UNIT	AVAILABLE AREA	SERVICES	PARKING	MONTHLY RENT
Office space, 4th floor	171 m ²	150 CZK monthly per m ²	No	€ 13.50 / m ²
Office space, 3rd floor + balcony	128 m ²	150 CZK monthly per m ²	No	€ 13.50 / m ²

Office building

€ 13.50 / m² | CZK 338 / m²299 m², Prague 1, Nové Město, Vodičkova

Service price	150 CZK monthly per m ²
Total building area	926 m ²
Tenant consumption	—
Parking	-
Parking service charges	—
Parking ratio	—
Certification	—
PENB	G
Reference number	30881

Historic building in the centre of Prague offers modern office space for lease that meets the high demands of the current working environment. The building is equipped with air conditioning, a modern elevator and state-of-the-art technical facilities. Restaurant on the ground floor provides maximum comfort for employees and clients.

Location:

In the immediate vicinity are several tram stops (Lazarská, Vodičkova, Myslíkova and Novoměstská radnice), as well as the metro station Národní třída (line B), which ensures easy and quick access from different parts of Prague.

Features and Services:

ISDN telephone lines
Internet connection
Air conditioning
Modular suspended ceilings
Parquet floors
24/7 access
Elevator
Toilet and kitchenette
Fan coil heating

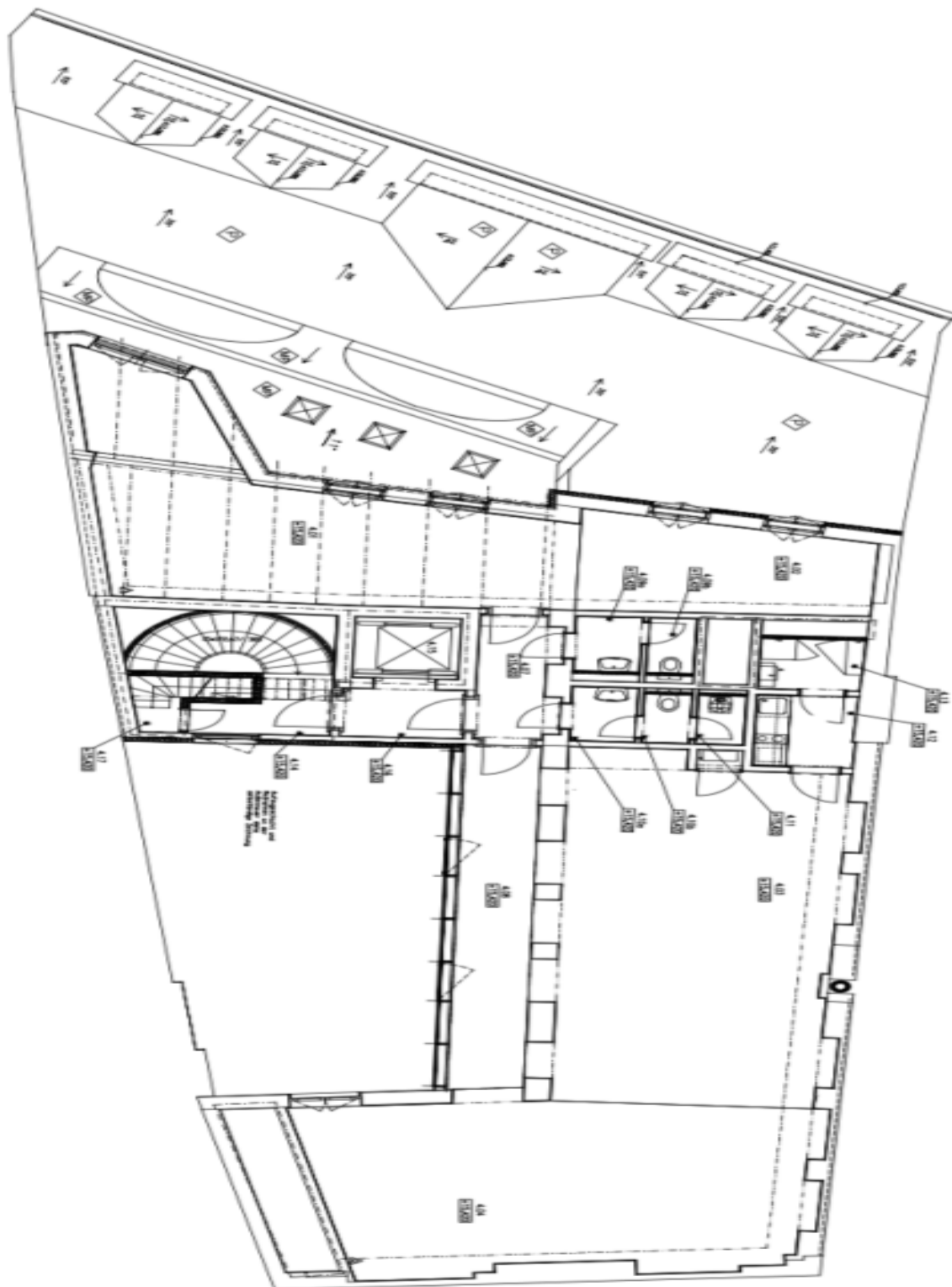
Rental and service charges listed without VAT. Lessee pays no commission.

Office building

€ 13.50 / m² | CZK 338 / m²

299 m², Prague 1, Nové Město, Vodičkova





4. patro / 4th floor

